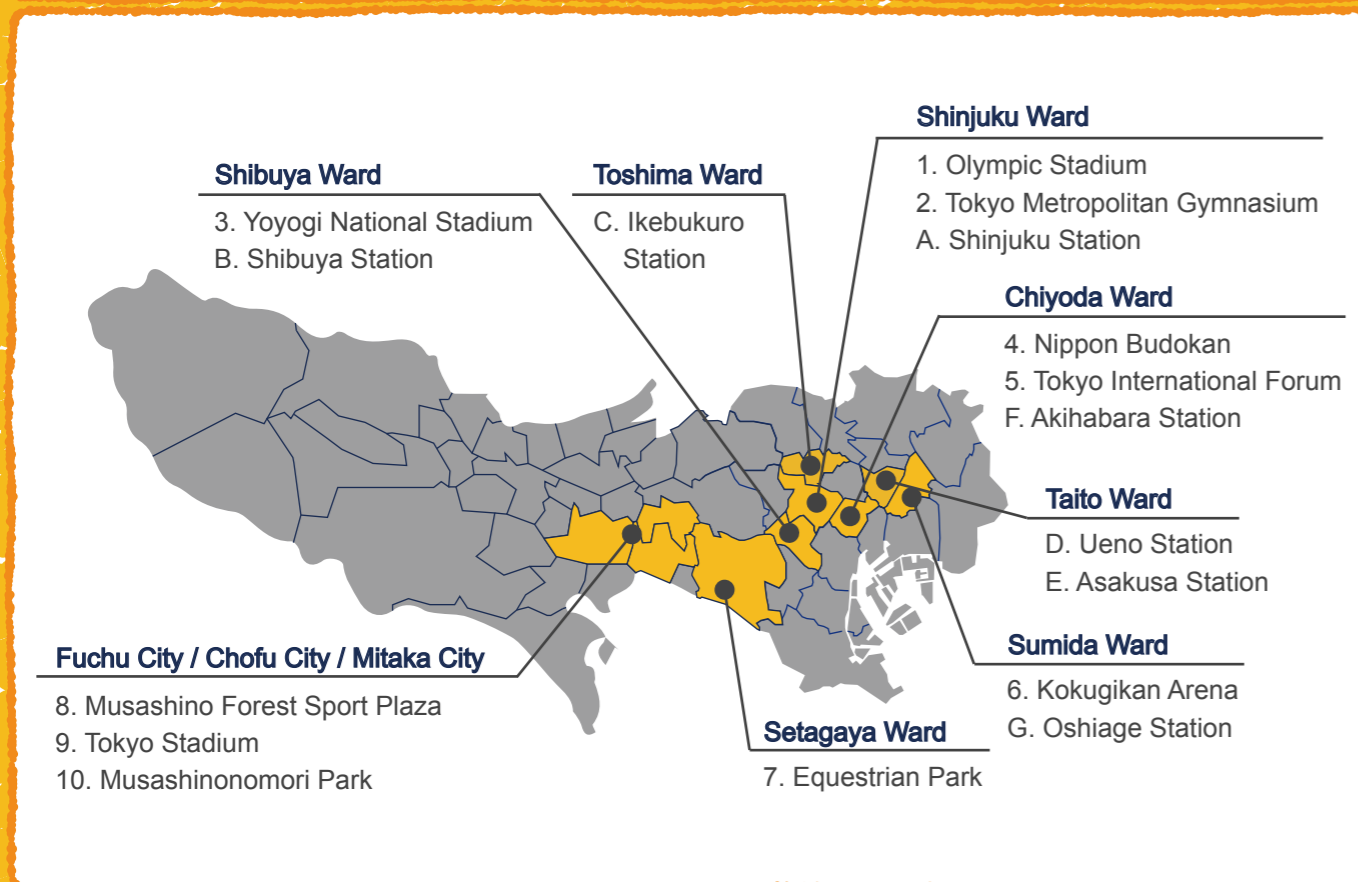


Heritage Zone 2



Map Number	Restaurant name	Category	Page
5	Neo Kissa KING	Cafe	P.58
5	Nakamura Tokichi Honten	Cafe	P.60
6	Tomoegata	Japanese	P.62
6	Hana-no Mai	Japanese	P.64
6	Ryogoku Terrace Cafe	Western	P.66
7	RUMP CAP	Western	P.68
7	GITA	Western	P.70
8 ~ 10	MAISEN	Japanese	P.72
8 ~ 10	Suihassen	Chinese	P.74
8 ~ 10	Bamiyan	Chinese	P.76
A	KAISEN MISAKIKO	Japanese	P.78
A	TOKORI	International	P.80
B	ocha room ashita ITOEN	Cafe	P.82
C	SIAM CELADON	International	P.84
D	Kamonka	Chinese	P.86
E	Kurasushi	Japanese	P.88
F	Obon de Gohan	Japanese	P.90
G	Daruma	Japanese	P.92
G	Yoshinoya	Japanese	P.94

Opening hours, regular holidays, number of seats, etc. may differ from those listed due to the effects of COVID-19. Please check with the store in advance when you visit.

Checklist / Heritage Zone 2



Restaurant name	Doorway Step Height ≤ 2cm	Doorway Width ≥ 80cm	Accessibility available	Movable chairs	Restroom on same floor	Wheelchair charging	Writing service	Accommodates for food allergies	Free Wi-Fi	Multilingual website	Foreign language menu	Page
Neo Kissa KING	●	●	●	●		●	●	●	●	●	●	P.58
Nakamura Tokichi Honten	●	●	●	●	●	●	●	●	●	●	●	P.60
Tomoegata	●		●	●		●	●	●			●	P.62
Hana-no Mai	●		●	●	●	●	●	●	●	●	●	P.64
Ryogoku Terrace Cafe	●	●	●	●	●	●	●		●		●	P.66
RUMP CAP	●	●	●	●		●	●	●			●	P.68
GITA	●	●	●	●		●		●				P.70
MAISEN	●	●	●	●	●	●	●	●	●	●		P.72
Suihassen	●	●	●	●		●	●	●	●	●	●	P.74
Bamiyan	●	●	●	●		●	●	●	●	●	●	P.76
KAISEN MISAKIKO	●	●	●	●	●	●	●	●			●	P.78
TOKORI	●	●	●	●	●		●	●			●	P.80
ocha room ashita ITOEN	●	●	●	●	●	●	●	●	●		●	P.82
SIAM CELADON	●	●	●	●	●	●	●	●			●	P.84
Kamonka	●	●	●	●		●	●	●	●	●	●	P.86
Kurasushi	●	●	●	●	●		●	●	●	●	●	P.88
Obon de Gohan	●	●	●	●	●		●				●	P.90
Daruma	●	●	●	●	●	●	●	●	●		●	P.92
Yoshinoya	●	●	●	●		●	●	●		●	●	P.94

Neo Kissa KING



Doorway Step
Height ≤ 2cm



Doorway
Width ≥ 80cm



Accessibility
available



Movable
chairs



Restroom on
same floor



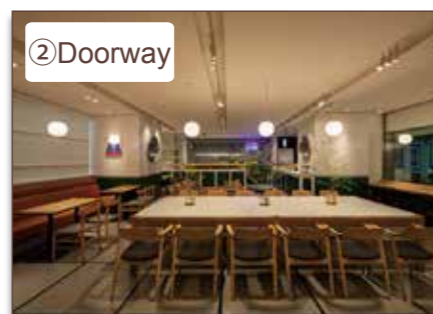
Café serving dishes under the supervision of famous Tokyo chefs

① Exterior



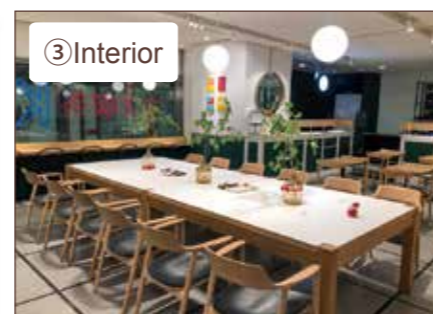
Located on B1F of Hankyu MEN'S TOKYO
Entrance width - 83cm

② Doorway



Enough turning space for wheelchair
Aisle width - 106cm

③ Interior



Movable tables and chairs
Size of chair seat - 44cm

④ Aisle



Safe passage for manual wheelchair

⑤ Counter



Pay in advance with order

⑥ Counter



Counter for returning trays

⑦ Counter



Counter
Tabletop - 74cm / Under tabletop - 69cm

⑧ Table



Table leg in middle

⑨ Table



4 table legs
Tabletop - 73cm / Under tabletop 59cm

Additional Information



Portable electric wheelchair user

There are allergy annotations in the menu.
Light dishes can be replaced with paper cups or pudding containers.
The multipurpose toilet is on the 6th floor. There is handicap parking space in the facility.

Specialties

*The simplified item name below may differ from the actual name on the menu

Cafe



Beef omelet rice



Curry



Tiramisu

Accessibility Information



Straw



Spoon
Fork



Light
plate / cup



Can be
thinly cut



Minced
food



Thickened
food



Check
payable
at table



Accommodates
for food
allergies



Wheelchair
charging



Braille
menu



Writing
service

Tourist Information



Vegetarian
food
negotiable



Muslim
Accommodates
for Muslims



Wi-Fi
Free



Menu with
pictures



Translation
device



Finger
pointing
translation
sheets



Multilingual
website



Social
media



Overseas
website



Foreign language
menu
(English)



Multilingual staff

Accessible Route Information

Route from closest station

250m from Yurakucho Station Central Exit

- From the central ticket exit, go 120m along the road by the plaza on the right
- Cross the crosswalk and to destination is on B1F by elevator on the concourse

Route from stadium

350m from the Tokyo International Forum

- Cross the crosswalk out from the site and turn left, go 90m
- Turn right at the corner, go 120m along the railroad
- Go 120m on the left side street of the Plaza
- Cross the crosswalk, take the concourse elevator to B1 to the destination



Store Information

Hankyu MEN'S TOKYO B1F, 2-5-1
Yuraku-cho, Chiyoda-ku, Tokyo

03-6252-5285 03-6252-5285

https://www.transit-web.com/content/shops/neo_kissa_king/

11:00 - 20:00 (L.O. 19:00)

Facility Holiday

Non-smoking

58 (Table: 50, Counter: 8)

1,000 - 2,000

Cash, Credit card, Electronic money
(VISA, Master, Union, JCB, Amex,
Diners, Discover, Suica, Edy, iD, QUIC,
Pay, LINE, Ali, WeChat)

Advance Payment

For more details

<https://app.wheelog.com/map/custom/admin/map?spotId=33896>



Nakamura Tokichi Honten Ginza



Doorway Step
Height ≤ 2cm



Doorway
Width ≥ 80cm



Accessibility
available



Movable
chairs



Restroom on
same floor



Specialties

*The simplified item name below may differ from the actual name on the menu

Cafe



Green tea soba



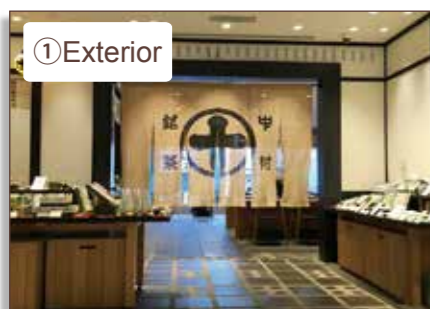
Green tea parfait



Green tea jelly

Café where you can experience a traditional Japanese tea ceremony known as *chanoyu*, that includes matcha, Japanese sweets, matcha soba, etc.

① Exterior



Located on 4F of GINZA SIX

② Doorway



Open entrance with no steps
Entrance width - 150cm

③ Interior



No steps

④ Interior



Safe passage for manual wheelchair
Aisle width - 100cm

⑤ Table



Window side table seating
Tabletop - 72cm / Under tabletop - 68cm

⑥ Counter



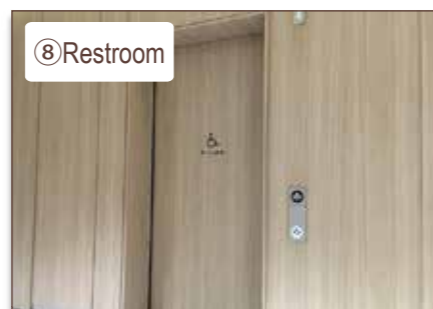
Accessible counter seating
Tabletop - 80cm / Under tabletop - 75cm

⑦ Cashier



Checkout stand
Height 95cm

⑧ Restroom



Accessible restroom on the same floor
Push-button Door

⑨ Restroom



Handrail: Fixed (L) / Movable (R)

Accessibility Information



Straw



Spoon
Fork



Light
plate / cup



Can be
thinly cut



Minced
food



Thickened
food



Check
payable
at table



Accommodates
for food
allergies



Wheelchair
charging



Braille
menu



Writing
service

Tourist Information



Vegetarian
food
negotiable



Muslim
Accommodates
for Muslims



Wi-Fi
Free



Menu with
pictures



Translation
device



Finger
pointing
translation
sheets



Multilingual
website



Social
media



Overseas
website



Foreign language
menu
(English)



Multilingual staff
(English)

Accessible Route Information

Route from closest station

180m from Ginza Station A7 Exit

- Take the elevator at A7 exit to the first floor
- Cross the crosswalk at the junction and go 160m
- Cross the crosswalk at the junction and the destination is on the fourth floor of the commercial building

Route from stadium

1.1km from Tokyo International Forum

- Turn left from the site and go 460m crossing, 6 crosswalks
- Turn right at the junction and go 570m crossing, 4 crosswalks
- Turn left at the junction and the destination is on the fourth floor of the commercial building



Store Information

GINZA SIX 4F, 6-10-1 Ginza, Chuo-ku, Tokyo

03-6264-5168

https://www.tokichi.jp/stores/map_ginza.html

10:30 - 20:30 (L.O. 19:45)

New Year holidays,
No weekly holidays
(closed on facility holidays)

Non-smoking

50 (Table: 37, Counter: 13)

1500

Cash, Credit card, Electronic money
(VISA, Master, Union, JCB, Amex, Diners,
Discover, Ali, Wechat)

Later Payment

Additional Information

You can charge electric wheelchairs at some of the seats in the restaurant.
The multipurpose toilet is located next to the restaurant.
There is one disabled parking space at the facility.

Manual wheelchair user

For more details

<https://app.wheelog.com/map/custom/admin/map?spotId=34067>



Chanko Tomoegata



Doorway Step Height ≤ 2cm



Doorway Width ≥ 80cm



Accessibility available



Movable chairs



Restroom on same floor



Chanko Tomogata serves *chanko* and is located near Ryogoku, a long-established sumo wrestling home ground



① New Bldg.

We have a new and Main Bldg.



② New Bldg.

Step eliminating block / Automatic door
Entrance width - 96cm



③ Main Bldg.

Step eliminating block / Automatic door
Aisle width - 76.5cm



④ New Bldg.

Width of inside elevator - 80cm



⑤ New Bldg.

Safe passage for manual wheelchair
Aisle width - 91.5cm



⑥ New Bldg.

Movable tables and chairs
Tabletop - 71.5cm / Under tabletop - 67cm



⑦ Main Bldg.

Enough turning space for wheelchair
Aisle width - 200cm



⑧ Main Bldg.

Equipment under top plate
Tabletop - 68cm / Under tabletop - 64cm



⑨ Restroom

Regular restroom at Main Bldg. / Entrance width - 62cm (Men's) / 56cm (Women's)

Additional Information

Portable electric wheelchair user

You can ask for chopped food. Electric wheelchairs can be charge and staff will help you read the menu. The multipurpose toilets are located in the public toilets in front of the station and in the Ryogoku Edo NOREN building. There is a parking lot in the vicinity but no disabled parking spaces.

Specialties

*The simplified item name below may differ from the actual name on the menu

Japanese food



Chanko (Soy sauce taste)



Skewers (Chicken)



Appetizer

Accessibility Information

- Straw
- Spoon Fork
- Light plate / cup
- Can be thinly cut
- Minced food
- Thickened food
- Check payable at table
- Accommodates for food allergies
- Wheelchair charging
- Braille menu
- Writing service

Tourist Information

- Vegetarian food negotiable
- Muslim Accommodates for Muslims
- Wi-Fi Free
- Menu with pictures
- Translation device
- Finger pointing translation sheets
- Multilingual website
- Social media
- Overseas website
- Foreign language menu (English·Chinese·Korean)
- Multilingual staff

Accessible Route Information

Route from closest station

220m from Ryogoku Station West Exit

- From the West Exit, go 45m
- Turn left at the junction and go 40m
- Cross 2 crosswalks and go 100m
- Turn left at the corner where there is a pharmacy and go 50m to the destination

Route from stadium

440m from the Kokugikan Arena

- Turn left from the site, and go 310m, crossing 4 crosswalks
- Turn left at the corner where there is a pharmacy and go 50m to the destination



Store Information

- 2-17-6 Ryogoku, Sumida-ku, Tokyo
- 03-3632-5600 03-3635-3056
- <https://www.tomoegata.com/>
- Mon - Fri: 11:30 - 15:00 (L.O. 14:00) 17:00 - 22:30 (L.O. 21:30)
- Sat / Sun / Holiday: 11:30 - 15:00 (L.O. 14:00) 16:30 - 22:30 (L.O. 21:30)
- Mon for Jun - Aug New Year holidays (12/30 - 1/4)
- Non-smoking except outside designated area
- New bldg: Table: 62 Main bldg: Table: 68, Counter: 8, Tatami: 32
- Lunch: 1,000 - 3,000 Dinner: 5,000 - 7,000
- Cash, Credit card (VISA, Master, Union, JCB, Amex, Diners)
- Later Payment

For more details

<https://app.wheelog.com/map/customer/admin/map?spotId=15628>



Hana-no Mai Edo-Tokyo Museum



Doorway Step
Height ≤ 2cm



Doorway
Width ≥ 80cm



Accessibility
available



Movable
chairs



Restroom on
same floor



Izakaya (restaurant/bar) that is famous for *chanko* hot pot and a small sumo wrestling ring inside the restaurant



① Doorway

Automatic door / No steps
Entrance width - 74cm



② Aisle

Enough space in hallway for 2 wheelchairs



③ Interior

Enough turning space for wheelchair
Aisle width - 90~160cm



④ Private room

Private room seating up to 100 people



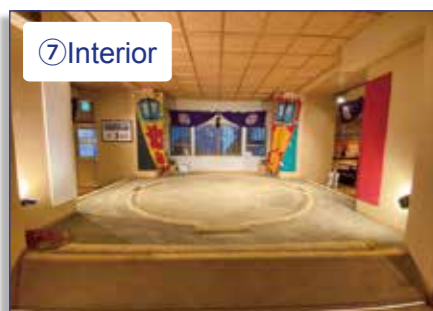
⑤ Aisle

Movable tables and chairs
Size of chair seat - 40cm



⑥ Table

Table legs on both sides
Tabletop - 70cm / Under tabletop - 67cm



⑦ Interior

Sumo ring inside



⑧ Restroom

Accessible restroom in the store
Manual Sliding door



⑨ Restroom

Handrail: Fixed (L) / Movable (R)

Additional Information



Portable electric wheelchair user

Private rooms that seat a maximum of 100 people are available for groups of wheelchairs.
There is a coin-operated parking lot in the vicinity but there are no handicap parking spaces.

Specialties

*The simplified item name below may differ from the actual name on the menu

Japanese food



Sushi



Table cooking chowder pot



Assorted Sashimi platter

Accessibility Information



Straw



Spoon
Fork



Light
plate / cup



Can be
thinly cut



Minced
food



Thickened
food



Check
payable
at table



Accommodates
for food
allergies



Wheelchair
charging



Braille
menu



Writing
service

Tourist Information



Vegetarian
food
negotiable



Accommodates
for Muslims



Wi-Fi
Free



Menu with
pictures



Translation
device



Finger
pointing
translation
sheets



Multilingual
website



Social
media



Overseas
website



Foreign language
menu
(English-Chinese)



Multilingual staff
(English-Chinese-
Vietnamese)

Accessible Route Information

Route from closest station

190m from Ryogoku Station A3 Exit

- Take the elevator at A3 exit to the first floor
- Alight the elevator and cross the crosswalk in front
- Turn right, cross the crosswalk and go 130m

Route from stadium

950m from Kokugikan Arena

- Turn left out from the site, cross 2 crosswalks and go 160m
- Pass under the viaduct, turn left and go 510m
- Turn left at the street, go 130m
- Turn right at the junction, cross the crosswalk and turn right, go 110m



Store Information

1-1-15 Kamezawa, Sumida-ku, Tokyo

03-5619-4488 03-5619-4489

https://hananomai-official.com/shop/hakubutukan_mae/

Mon - Fri: 11:30 - 24:00, Sat: 11:00 - 24:00
Sun / Holiday: 11:00 - 23:00
(L.O. 14:00, 30 minutes prior to the closing)

1/1

Non-smoking until 2 pm

470
(Table: 302, Tatami: 126, Box seat: 42)

Lunch: 680 - 1,500
Dinner: 2,500 - 3,000

Cash, Credit card, Electronic money
(VISA, Master, Union, JCB, Amex, Diners,
Discover, Suica, WAON, nanaco, Edy, iD,
QUIC, Pay, LINE, Ali, WeChat, d, Yucho,
mer, K, EPOS, atone)

Later Payment

For more details

<https://app.wheelog.com/map/customer/admin/map?spotId=20453>



Ryogoku Terrace Cafe



Doorway Step Height ≤ 2cm | Doorway Width ≥ 80cm | Accessibility available | Movable chairs | Restroom on same floor



Glass-walled café where one can dine with a view of the garden, located a 4-minute walk away from Ryogoku Kokugikan



① Exterior

Steps at the main entrance



② Doorway

Slope installed on right-hand side



③ Terrace

Accessible Restroom (Upper Right Photo)



④ Terrace

Terrace seating



⑤ Doorway

Hinged (pull open) door / No steps
Entrance width - 85cm



⑥ Interior

Horigotatsu in winter (low table over a hole in the floor with heating)



⑦ Interior

Enough turning space for wheelchair
Aisle width - 128cm



⑧ Table

Movable tables and chairs
Tabletop - 72cm / Under tabletop - 68cm



⑨ Restroom

Accessible restroom out in the terrace
Handrail: Fixed (L) / None (R)

Additional Information

Go up the ramp next to the restaurant and you will find the entrance.
There is a multipurpose toilet in the terrace area.
There is a parking lot across from the restaurant but no handicap parking.

Manual wheelchair user

Specialties

*The simplified item name below may differ from the actual name on the menu

Western food



Fish lunch set



Beef Steak & Potato



Oolong tea & soup

Accessibility Information

- Straw
- Spoon Fork
- Light plate / cup
- Can be thinly cut
- Minced food
- Thickened food
- Check payable at table
- Accommodates for food allergies
- Wheelchair charging
- Braille menu
- Writing service

Tourist Information

- Vegetarian food negotiable
- Muslim Accommodates for Muslims
- Wi-Fi Free
- Menu with pictures
- Translation device
- Finger pointing translation sheets
- Multilingual website
- Social media
- Overseas website
- Foreign language menu (English)
- Multilingual staff (English • French • German • Korean)

Accessible Route Information

Route from closest station

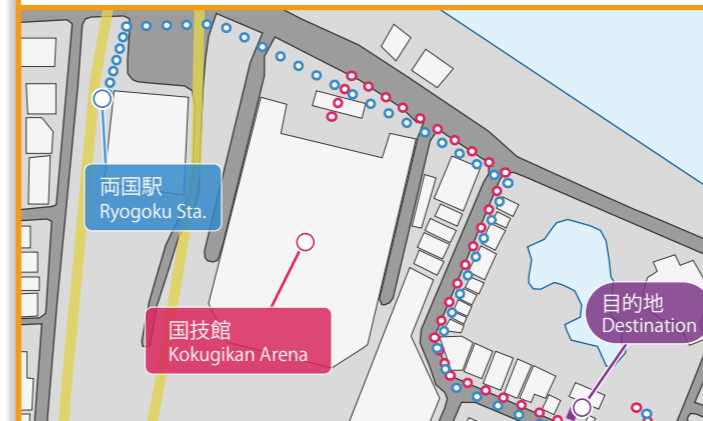
520m from Ryogoku Station West Exit

- From the West exit, turn right, cross 2 crosswalks and go 260m
- Cross the crosswalk at the junction, turn right and go 260m along the street
- Turn left at the junction and the destination is inside the garden

Route from stadium

400m from Kokugikan Arena

- Turn right out from the site, go 100m
- Cross the crosswalk at the junction and turn right, go 260m along the road
- Turn left at the junction and the destination is inside the garden



Store Information

- 1-12-21 Yokoami, Sumida-ku, Tokyo
- 03-5608-7580 | 03-5608-7581
- <https://ryogokuterrace.owst.jp/>
- 11:30 - 15:00 (L.O. 14:30)
17:30 - 23:00 (L.O. 22:30)
Opens at 11:00 on Sat / Sun / Holiday
- New Year holidays (12/31 - 1/2)
- Non-smoking except partially designated terrace area
- 138
- Lunch: 1,000 - 1,500
Dinner: 3,500 - 4,000
- Cash, Credit card, Electronic money (VISA, Master, JCB, Amex, Pay)
- Later Payment

For more details

<https://app.wheelog.com/map/customer/admin/map?spotId=3146>



RUMP CAP Sakurashinmachi



- Doorway Step**
 Height ≤ 2cm
- Doorway**
 Width ≥ 80cm
- Accessibility**
 available
- Movable**
 chairs
- Restroom** on
 same floor

Diner/bar specializing in BBQ meat

 ① Exterior Located on B1F	 ② Doorway EV at the end of hallway on 1F	 ③ Doorway No control panel for wheelchair
 ④ Doorway Hinged (pull open) door / No steps Entrance width - 80cm	 ⑤ Interior Enough turning space for wheelchair Aisle width - 100cm	 ⑥ Table Movable tables and chairs Size of chair seat - 45cm
 ⑦ Table Table leg in middle Tabletop - 73cm / Under tabletop - 70cm	 ⑧ Restroom 20cm Step to enter the restroom	 ⑨ Restroom No accessible restroom Entrance width - 60cm

Additional Information

There are No steps as one reaches the building and the basement entrance can be accessed by elevator.
 Chairs can be moved to accommodate 3 or 4 wheelchairs at a table.
 There is a time-limited parking lot in the vicinity.

Manual wheelchair user

Specialties

*The simplified item name below may differ from the actual name on the menu

Western food



Accessibility Information

- Straw
- Spoon Fork
- Light plate / cup
- Can be thinly cut
- Minced food
- Thickened food
- Check payable at table
- Accommodates for food allergies
- Wheelchair charging
- Braille menu
- Writing service

Tourist Information

- Vegetarian food negotiable
- Muslim Accommodates for Muslims
- Wi-Fi Free
- Menu with pictures
- Translation device
- Finger pointing translation sheets
- Multilingual website
- Social media
- Overseas website
- Foreign language menu (English)
- Multilingual staff (English)

Accessible Route Information

- Route from closest station**
- 50m from Sakura-shimmachi Station North Exit**
- ① Take the elevator at North exit to the first floor
 - ② Alight the elevator, turn around to the left and go 40m
 - ③ Cross the crosswalk and you will be able to see the building
 - ④ Take the elevator to the B1 floor of the building and the destination is there
- Route from stadium**
- 1.8km from Equestrian Park**
- ① From the site, cross the junction, turn right and go 160m
 - ② Turn right on the corner, and go 350m
 - ③ Go another 700m crossing 2 junctions
 - ④ Turn left on the corner, and go along the road a further 100m
 - ⑤ Turn left at the T-junction, go 400m crossing, 5 crosswalks
 - ⑥ Take the elevator to the B1 floor of the building and the destination is there



Store Information

- Koizumi Bldg. B1F, 2-9-1
Sakura-shinmachi, Setagaya-ku, Tokyo
- 03-5450-1061 03-5450-1062
- https://search.daisyo.co.jp/shop.php?shop_cd=1944
- 11:30 - 14:30 (L.O. 14:00)
17:00 - 23:00 (L.O. 22:30)
- Mon
- Separate smoking area available
- 60
- Lunch: 1,000 - 1,500
Dinner: 3,000 - 4,000
- Cash, Credit card, Electronic money (VISA, Master, Union, JCB, Amex, Diners, Discover, Suica, Edy, iD, QUIC)
- Later Payment

For more details

<https://app.wheelog.com/map/customer/admin/map?spotId=34057>



GITA

- Doorway Step Height ≤ 2cm
- Doorway Width ≥ 80cm
- Accessibility available
- Movable chairs
- Restroom on same floor



Italian restaurant in residential Setagaya serving dishes full of local organic vegetables

① Exterior

Located on 1F in quiet residential area

② Doorway

No steps from street level into Restaurant

③ Doorway

Hinged (pull open) door / No steps
Entrance width - 80cm

④ Interior

Enough turning space for wheelchair
Aisle width - 80cm

⑤ Interior

Seating capacity - 18 people

⑥ Table

Movable tables and chairs
Tabletop - 70cm / Under tabletop - 67cm

⑦ Table

Table leg in middle
Size of chair seat - 43cm

⑧ Restroom

2 Steps in front of restroom

⑨ Restroom

Entrance width - 53cm for a private room

Additional Information

The restaurant cannot accommodate for multiple wheelchairs at one time. Requests can be made in advance concerning chopped food and the thickening of meal components. The toilets in the restaurant are not for wheelchair use and there are no facilities nearby with multipurpose toilets. There is one handicap parking space in the vicinity. The chef speaks Italian and there is also staff who can speak a little English.

Manual wheelchair user

Specialties

*The simplified item name below may differ from the actual name on the menu

Western food



Accessibility Information

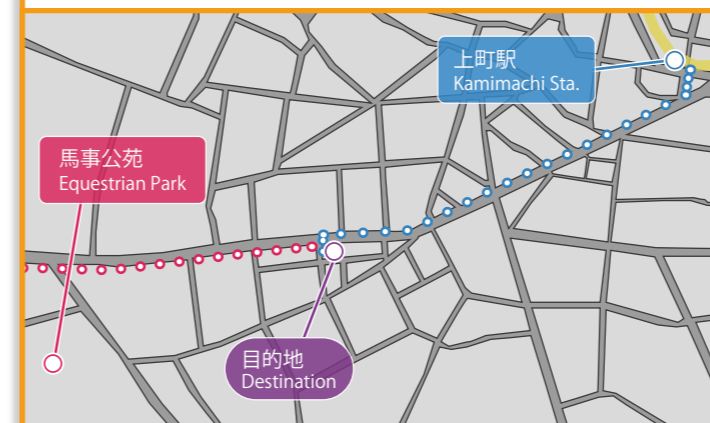
- Straw
- Spoon Fork
- Light plate / cup
- Can be thinly cut
- Minced food
- Thickened food
- Check payable at table
- Accommodates for food allergies
- Wheelchair charging
- Braille menu
- Writing service

Tourist Information

- Vegetarian food negotiable
- Muslim Accommodates for Muslims
- Wi-Fi Free
- Menu with pictures
- Translation device
- Finger pointing translation sheets
- Multilingual website
- Social media
- Overseas website
- Foreign language menu
- Multilingual staff (English-Italian)

Accessible Route Information

- Route from closest station**
870m from Kamimachi Station
① Cross the crosswalk at the junction and go 60m towards the bank ATM
② Turn right at the junction, cross the crosswalk and go 750m
③ Cross over at the 6th crosswalk and there is a pizza shop on the left
④ Cross the crosswalk before the pizza shop and the destination is a little further ahead
- Route from stadium**
800m from the Equestrian Park
① From the site, go into the park by crossing the crosswalk
② Go through the park, turn right at the restaurant and go 650m
③ Turn right at the pizza shop after crossing 5 crosswalks and the destination is on the left



Store Information

- Sakura Clean Castle 101, 3-2-10 Sakura, Setagaya-ku, Tokyo
- 03-3439-8876 03-3439-8876
- <http://gita-setagaya.com/>
- 11:30 - 15:00, 18:00 - 22:00
- Wed
- Non-smoking
- 18
- Lunch: 2,000
Dinner: 5,000
- Cash, Credit card (VISA, Master, JCB, Amex, Diners, Discover)
- Later Payment

For more details

<https://app.wheelog.com/map/customer/admin/map?spotId=34049>



Tonkatsu

MAISEN Torie KEIO CHOFU



- Doorway Step Height ≤ 2cm
- Doorway Width ≥ 80cm
- Accessibility available
- Movable chairs
- Restroom on same floor

Pork cutlet restaurant established in 1965 known for its pork cutlet that is so tender it can be cut with chopsticks

① Exterior

Located on 5F of Trie Keio Chofu A Bldg.

② Doorway

Open entrance with no steps
Entrance width - 110cm

③ Aisle

Safe passage for manual wheelchair
Aisle width - 77cm

④ Interior

Table / Counter

⑤ Interior

Counter seating
Tabletop - 90cm / Under tabletop - 75cm

⑥ Table

Movable tables and chairs
Size of chair seat - 44cm

⑦ Table

Table leg in middle
Tabletop - 72cm / Under tabletop - 67cm

⑧ Inside

Accessible Elevator

⑨ Restroom

Accessible restroom on the same floor
Handrail: Fixed (L) / Movable (R)

Additional Information

There are multipurpose toilets on the same floor and the fourth floor of the building and they are fitted with an assistive bed. Please enquire in advance if one has any allergies. Staff will use a translator on an iPad where necessary.

Manual wheelchair user

Specialties

*The simplified item name below may differ from the actual name on the menu

Japanese food



Accessibility Information

- Straw
- Spoon Fork
- Light plate / cup
- Can be thinly cut
- Minced food
- Thickened food
- Check payable at table
- Accommodates for food allergies
- Wheelchair charging
- Braille menu
- Writing service

Tourist Information

- Vegetarian food negotiable
- Muslim Accommodates for Muslims
- Wi-Fi Free
- Menu with pictures
- Translation device
- Finger pointing translation sheets
- Multilingual website
- Social media
- Overseas website
- Foreign language menu
- Multilingual staff (English)

Accessible Route Information

- Route from closest station**
- 20m from Chofu Station Central Gate**
- ① Out of Central gate, head to elevator in the shopping mall building A on the right
 - ② Take the elevator to the fifth floor at A Bldg. in the Shopping Mall
 - ③ The destination is on Restaurant floor
- Route from stadium**
- Musashino Forest Sport Plaza**
- ① Take Shuttle Bus to Chofu Station
 - ② Take the elevator to the fifth floor at A Bldg. in the Shopping Mall
 - ③ The destination is on Restaurant floor



Store Information

- Trie Keio Chofu A Bldg. 5F, 4-4-22 Fuda, Chofu-shi, Tokyo
- 042-444-8260 042-444-8260
- <https://mai-sen.com/>
- 11:00 - 23:00 (L.O. 22:00)
Lunch: Until 15:00
- Facility Holiday
- Non-smoking
- 56 (Table: 50, Counter: 6)
- Lunch: 1,000 ~
Dinner: 1,800 ~
- Cash, Credit card, Electronic money (VISA, Master, Union, JCB, Amex, Diners, Discover, Suica, iD)
- Later Payment

For more details

<https://app.wheelog.com/map/customer/admin/map?spotId=39279>



Suihassen

- Doorway Step
Height ≤ 2cm
- Doorway Width ≥ 80cm
- Accessibility available
- Movable chairs
- Restroom on same floor



Chinese restaurant open in the morning, afternoon and evening serving Sichuan cuisine

① Exterior

Enter from entrance of hotel on the parking lot side

② Exterior

Narrow main front entrance
Entrance width - 63cm

③ Doorway

Entrance at the end of Parking Lot
Entrance width - 105cm

④ Interior

Enough turning space for wheelchair
Aisle width - 80cm

⑤ Table

Round table
Size of chair seat - 43cm

⑥ Table

Movable tables and chairs
Tabletop - 70cm / Under tabletop - 67cm

⑦ Table

Table leg in middle
Tabletop - 73cm / Under tabletop - 70cm

⑧ Restroom

No accessible restroom

⑨ Restroom

Not enough space for wheelchair
Entrance width - 58cm

Additional Information Portable electric wheelchair user

Those in wheelchairs are encouraged to enter the restaurant from the back entrance of the parking lot.
Ask the staff for the nearby multipurpose toilets and for any necessary meal support. Smartphone translation can also be used.
There are wide parking spaces in the facility but no handicap parking.

Specialties *The simplified item name below may differ from the actual name on the menu

Chen's mabo tofu

Chinese food

Beef cooked in blue pepper

Fried rice

Accessibility Information

- Straw
- Spoon Fork
- Light plate / cup
- Can be thinly cut
- Minced food
- Thickened food
- Check payable at table
- Accommodates for food allergies
- Wheelchair charging
- Braille menu
- Writing service

Tourist Information

- Vegetarian food negotiable
- Muslim Accommodates for Muslims
- Wi-Fi Free
- Menu with pictures
- Translation device
- Finger pointing translation sheets
- Multilingual website
- Social media
- Overseas website
- Foreign language menu (Chinese)
- Multilingual staff (English-Chinese)

Accessible Route Information

Route from closest station

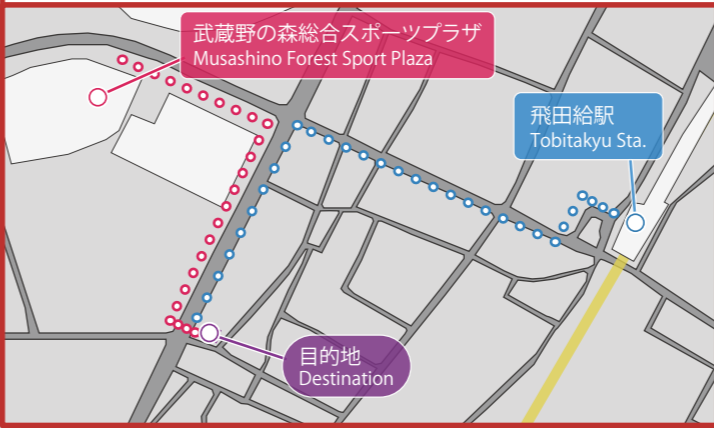
650m from Tobitakyu Station North Exit

- ① Take the North Exit Elevator to the first floor
- ② Turn left before the boxed lunch store and go 30m
- ③ Cross over the footbridge, turn right and go 300m
- ④ Turn left at the 2nd junction and go 260m
- ⑤ The destination is on the first floor of the hotel on your left before the junction
- ⑥ Wheelchair users must use the hotel entrance, not the main entrance

Route from stadium

450m from Musashino Forest Sport Plaza

- ① From the site, take elevator at the right of the pedestrian bridge to the first floor
- ② Out elevator and make U-turn, go 260m
- ③ Turn left at the junction and cross the crosswalk
- ④ The destination is 1F in the Hotel on the left
- ⑤ Wheelchair entrance at the Hotel entrance (not main entrance)



Store Information

CHOFU URBAN HOTEL 1F, 1-1-25
Tobitakyu, Chofu-shi, Tokyo

042-486-9455 042-483-0811

<http://www.suihassen.com/>

6:30 - 9:30 (L.O. 9:00)
11:00 - 15:00 (L.O. 14:30)
15:00 - 22:30 (L.O. 21:45)

Wed
(open when Tokyo Stadium has events)

Non-smoking

80 (62 at buffet style lunch hour)

Lunch: 1,000 - 2,000
Dinner: 2,500

Cash, Credit card (VISA, Master, JCB, Amex, Diners)

Later Payment

For more details

<https://app.wheelog.com/map/cus-tom/admin/map?spotId=33994>

Bamiyan Tobitakyu



- Doorway Step
Height ≤ 2cm
- Doorway
Width ≥ 80cm
- Accessibility
available
- Movable
chairs
- Restroom on
same floor

Chinese restaurant operated by a Japanese restaurant chain, where ramen and gyoza are the most popular

① Exterior

Near Tokyo Stadium

② Doorway

Hinged (pull open) door and / Steps
Entrance width - 80cm

③ Doorway

Double Door Structure
Aisle width - 80cm

④ Table

Movable tables and chairs
Size of chair seat - 42cm

⑤ Table

Table leg in middle
Tabletop - 67cm / Under tabletop - 64cm

⑥ Parking Lot

Not accessible for disabled people

⑦ Restroom

No accessible restroom

⑧ Restroom

Entrance width - 76cm of restroom

⑨ Restroom

Entrance width - 56cm of a private room

Additional Information Manual wheelchair user

There are multipurpose toilets located at the nearest stadium and station.
There is no handicap parking but one can reserve a wide parking space in advance except during peak hours.

Specialties *The simplified item name below may differ from the actual name on the menu
Chinese food

Ramen / Gyoza

Shrimp cooked in chili sauce

Chinese cuisine

Accessibility Information

- Straw**
- Spoon Fork**
- Light plate / cup
- Can be thinly cut
- Minced food
- Thickened food
- Check payable at table**
- Accommodates for food allergies**
- Wheelchair charging**
- Braille menu
- Writing service**

Tourist Information

- Vegetarian food negotiable
- Muslim Accommodates for Muslims
- Wi-Fi Free**
- Menu with pictures**
- Translation device
- Finger pointing translation sheets
- Multilingual website**
- Social media**
- Overseas website
- Foreign language menu (English)**
- Multilingual staff

Accessible Route Information

Route from closest station

130m from Tobitakyu Station North Exit

- Take the elevator at North exit to the first floor
- Turn left in front of the bento place and go 30m
- Turn right on the corner, go 80m and cross the crosswalk to the destination

Route from stadium

300m from Musashino Forest Sport Plaza

- From the site, take elevator near the sporting goods store on the left to the first floor
- Out elevator and turn left, go 240m and the destination is at the junction



Store Information

- 1-27-4 Tobitakyu, Chofu-shi, Tokyo
- 042-440-0490
- <https://store-info.skylark.co.jp/skylark/map/171137>
- 10:00 - 2:00
- Open all year round
- Non-smoking
- 100
- 1,000 - 2,000

Cash, Credit card, Electronic money (VISA, Master, Union, JCB, Amex, Diners, Discover, Suica, Edy, iD, QUIC, Pay, LINE, Ali, WeChat, d, mer, Rakurten)

Later Payment

For more details

<https://app.wheelog.com/map/customer/admin/map?spotId=34167>

KAISEN MISAKIKO

Shinjuku Eastside Square



Doorway Step Height ≤ 2cm Doorway Width ≥ 80cm Accessibility available Movable chairs Restroom on same floor



Conveyor belt sushi restaurant that also offers a fresh fish menu and is directly accessible from Higashi Shinjuku station



① Exterior

Located on B1F of Shinjuku East Side Square



② Doorway

Automatic door/No steps
Entrance width - 180cm



③ Interior

Tablet PC on each table for ordering



④ Table

Fixed Table / Booth



⑤ Interior

Enough turning space for wheelchair



⑥ Counter

Counter with fixed chair
Size of chair seat - 44cm



⑦ Aisle

Safe passage for manual wheelchair
Aisle width - 75cm



⑧ Counter

Movable chairs



⑨ Counter

Baggage space under tabletop
Tabletop - 76cm / Under tabletop - 70cm

Additional Information

The chairs are fixed at the table seating.
There is allergen information on the menu and a multipurpose toilet on the same floor.

Manual wheelchair user

Specialties

*The simplified item name below may differ from the actual name on the menu

Japanese food



Sushi



Conger eel sushi & Gunkan-maki



Fishhead soup

Accessibility Information

- Straw
- Spoon Fork
- Light plate / cup
- Can be thinly cut
- Minced food
- Thickened food
- Check payable at table
- Accommodates for food allergies
- Wheelchair charging
- Braille menu
- Writing service

Tourist Information

- Vegetarian food negotiable
- Muslim Accommodates for Muslims
- Wi-Fi Free
- Menu with pictures
- Translation device
- Finger pointing translation sheets
- Multilingual website
- Social media
- Overseas website
- Foreign language menu (English • Chinese • Korean)
- Multilingual staff (English)

Accessible Route Information

- Route from closest station**
- 60m from Higashi-shinjuku Station A3 Exit
- Take the elevator at A3 exit to B1F
 - Alight the elevator, turn left and go 30m to destination is on the right
- 1.8km from Shinjuku Station South Exit
- From the South exit, turn left and head to South East gate
 - Take the elevator to the first floor
 - Alight the elevator, go a little further and go 330m
 - Cross the crosswalk and go 200m
 - Cross the crosswalk at the junction, turn left and cross another crosswalk
 - Turn right and go 450m along the railroad
 - Turn right at T-junction, cross 8 crosswalks and go 650m
 - Take the elevator on the right and the destination is on B1F
- Route from stadium**
- none



Store Information

- Shinjuku East Side Square B1F, 6-27-30 Shinjuku, Shinjuku-ku, Tokyo
- 03-5291-9931
- <https://www.kyotaru.co.jp/>
- Mon - Fri: 11:00 - 23:00 (L.O. 22:30)
Sat / Sun / Holiday: 11:00 - 22:00 (L.O. 21:30)
- Facility Holiday
- Non-smoking
- 29 (Table: 12, Counter: 16)
- 1,000 - 3,000
- Cash, Credit card, Electronic money (VISA, Master, Union, JCB, Amex, Suica, nanaco, Edy, iD, QUIC)
- Later Payment

For more details

<https://app.wheelog.com/map/custom/admin/map?spotId=39319>



TOKORI Shinjuku Odakyu



- Doorway Step
Height ≤ 2cm
- Doorway
Width ≥ 80cm
- Accessibility
available
- Movable
chairs
- Restroom on
same floor

Korean restaurant famous for *yakiniku* (grilled meat), where one can enjoy a whole cow selected by the head chef

① Exterior

Located on 12F of Odakyu Department Store Shinjuku Manhattan Hills

② Doorway

Open entrance with no steps
Entrance width - 140cm

③ Interior

Cashier counter

④ Aisle

Enough space in hallway for 2 wheelchairs
Aisle width - 140cm

⑤ Table

4 legs under table
Tabletop - 73cm / Under tabletop - 70cm

⑥ Table

Baggage space under tabletop

⑦ Table

Movable tables and chairs
Size of chair seat - 43cm

⑧ Table

Table by the window

⑨ Table

Table by the window available

Additional Information

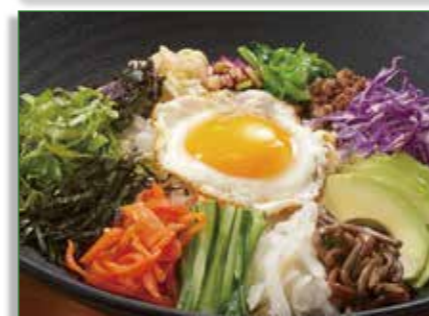
- There is a private room for wheelchairs.
- There is allergen information on the menu and staff will translate using an app where necessary.
- There is a multipurpose toilet on the same floor and four handicap parking spaces in the parking lot at the nearest station.

Manual wheelchair user

Specialties

*The simplified item name below may differ from the actual name on the menu

International food



Korean spicy mixed rice



Salisbury steak set



Chige Nabe (Kimchi based nabe)

Accessibility Information

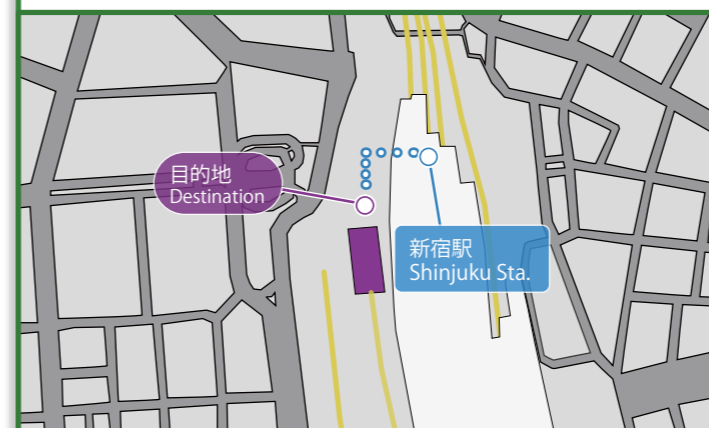
- Straw
- Spoon Fork
- Light plate / cup
- Can be thinly cut
- Minced food
- Thickened food
- Check payable at table
- Accommodates for food allergies
- Wheelchair charging
- Braille menu
- Writing service

Tourist Information

- Vegetarian food negotiable
- Muslim Accommodates for Muslims
- Wi-Fi Free
- Menu with pictures
- Translation device
- Finger pointing translation sheets
- Multilingual website
- Social media
- Overseas website
- Foreign language menu (English-Chinese)
- Multilingual staff (English-Chinese)

Accessible Route Information

- Route from closest station**
50m from Shinjuku Station West Exit
① From the West exit, turn left to elevator at the department store
② The destination is on 12F at the department store
- Route from stadium**
none



Store Information

- Odakyu Department Store Shinjuku Manhattan Hills 12F, 1-1-3 Nishi-Shinjuku, Shinjuku-ku, Tokyo
- 03-6911-1711
- <https://www.to-ko-ri.jp>
- 11:00 - 22:00 (L.O. 21:15)
- Facility Holiday
- Non-smoking
- 86
- Lunch: 1,000 - 2,000
Dinner: 2,000 - 3,000
- Cash, Credit card, Electronic money (VISA, Master, Union, JCB, Amex, Diners, Discover, Suica, QUIC, Pay, LINE, Ali, WeChat, Rakuten, d)
- Later Payment

For more details

<https://app.wheelog.com/map/custom/admin/map?spotId=39343>



ocha room ashita ITOEN



Doorway Step Height ≤ 2cm



Doorway Width ≥ 80cm



Accessibility available



Movable chairs



Restroom on same floor

Café located on the 10th floor of Shibuya Scramble Square that offers a make-it-yourself *matcha* experience



① Exterior

Located on 10F of SHIBUYA SCRAMBLE SQUARE



② Doorway

Open entrance with no steps
Entrance width - 251cm



③ Interior

Enough turning space for wheelchair



④ Table

4 legs under table
Size of chair seat - 41cm



⑤ Aisle

Safe passage for manual wheelchair
Aisle width - 91cm



⑥ Table

Table leg in middle
Tabletop - 70cm / Under tabletop - 66.7cm



⑦ Counter

Movable chairs



⑧ Counter

Accessed by Elevating Electric Wheelchair



⑨ Restroom

Accessible restroom on the same floor
Handrail: Movable (L) / Fixed (R)

Additional Information

There are multipurpose toilets on the same floor as well as on other floors.
There is allergen information available.

Electric wheelchair user

Specialties

*The simplified item name below may differ from the actual name on the menu

Cafe



Green tea baguette sandwich



Green tea warabimochi



Sweet red bean soup

Accessibility Information

Straw	Spoon Fork	Light plate / cup
Can be thinly cut	Minced food	Thickened food
Check payable at table	Accommodates for food allergies	Wheelchair charging
Braille menu	Writing service	

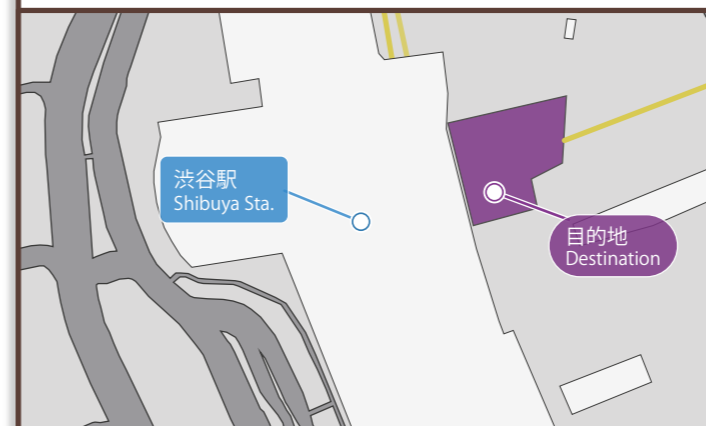
Tourist Information

Vegetarian food negotiable	Muslim Accommodates for Muslims	Wi-Fi Free
Menu with pictures	Translation device	Finger pointing translation sheets
Multilingual website	Social media	Overseas website
Foreign language menu (English)	Multilingual staff (English-Korean)	

Accessible Route Information

Route from closest station
Shibuya Station Hikarie Exit on B3F
 ① From the Hikarie 1 Exit, go right and take elevator to the first floor
 Go left out of Hikarie 2 Exit and take elevator to the first floor
 ② Alight the elevator and head to elevator in the back of the building
 ③ The destination is on 10F in the building

Route from stadium
 none



Store Information

SHIBUYA SCRAMBLE SQUARE 10F,
2-24-12 Shibuya, Shibuya-ku, Tokyo

03-6803-8112

<https://www.itoen.jp/shopping/store/detail.php?id=257>

10:00 - 21:00 (F.L.O. 20:00 / D.L.O. 20:30)

1/1, Facility Holiday

43 (Table: 36, Counter: 7)

Non-smoking except designated smoking area inside the facility

Lunch: 1,000 - 2,000
Dinner: 1,000 - 2,000

Cash, Credit card, Electronic money (VISA, Master, Union, JCB, Amex, Diners, Discover, Suica, Ali, WeChat)

Later Payment

For more details

<https://app.wheelog.com/map/custom/admin/map?spotId=39311>



SIAM CELADON

Ikebukuro Tobu



Doorway Step Height ≤ 2cm Doorway Width ≥ 80cm Accessibility available Movable chairs Restroom on same floor



Thai restaurant located on the 11th floor of the Tobu department store connected to Ikebukuro station



① Inside

Elevator from ticket gate at the train station



② Exterior

Located on 11F of Tobu Department Store



③ Doorway

Sliding door / No steps
Entrance width - 110cm



④ Interior

Enough turning space for wheelchair



⑤ Aisle

Safe passage for manual wheelchair
Aisle width - 110cm



⑥ Table

Movable tables and chairs
Tabletop - 73cm / Under tabletop - 70cm



⑦ Table

Table leg in middle
Size of chair seat - 44cm



⑧ Restroom

Accessible restroom on the same floor
Push-button Door



⑨ Restroom

Handrail: Fixed (L) / Movable (R)

Additional Information

Please ask about the spiciness of the food.
Only cash is permitted for bills settled at the table.
There is a multipurpose toilet on the same floor.

Manual wheelchair user

Specialties

*The simplified item name below may differ from the actual name on the menu

International food



Fried crab / egg with curry flavor



Fresh spring rolls



Thai fried rice noodles

Accessibility Information

- Straw
- Spoon Fork
- Light plate / cup
- Can be thinly cut
- Minced food
- Thickened food
- Check payable at table
- Accommodates for food allergies
- Wheelchair charging
- Braille menu
- Writing service

Tourist Information

- Vegetarian food negotiable
- Muslim Accommodates for Muslims
- Wi-Fi Free
- Menu with pictures
- Translation device
- Finger pointing translation sheets
- Multilingual website
- Social media
- Overseas website
- Foreign language menu (English・Thai)
- Multilingual staff (English・Thai)

Accessible Route Information

Route from closest station
60m from Ikebukuro Station West Exit
 ① From the ticket gate, head towards the center of West exit and to the department store
 ② Take exclusive elevator for 8~15F on the right to 11F
 ③ The destination is on on Restaurant floor

Route from stadium
 none



Store Information

Address: Tobu Department Store Ikebukuro DINING CITY SPICE 11F, 1-1-25 Nishi-Ikebukuro, Toshima-ku, Tokyo

Phone: 03-6912-6256

Website: http://www.blueceladon.com/Siam_Celadon_tobu_ikebukuro.html

Hours: 10:00 - 21:00 (F.L.O. 20:00 / D.L.O. 20:30)

Facility Holiday: Non-smoking

Seating: 43 (Table: 36, Counter: 7)

Price: Lunch: 1,000 - 2,000 / Dinner: 1,000 - 2,000

Payment: Cash, Credit card, Electronic money (VISA, Master, Union, JCB, Amex, Diners, Discover, Suica, Ali, WeChat)

Other: Later Payment

For more details

<https://app.wheelog.com/map/custom/admin/map?spotId=39200>



Kamonka Ueno Bamboo Garden



- Doorway Step**
 Height ≤ 2cm
- Doorway Width**
 ≥ 80cm
- Accessibility**
 available
- Movable chairs**
- Restroom on same floor**

Chinese restaurant where one can enjoy various Chinese cuisine

① Exterior

Located on 1F of Ueno Bamboo Garden

② Doorway

Automatic door / No steps
Entrance width - 140cm

③ Aisle

Enough space in hallway for 2 wheelchairs

④ Interior

Non-accessible entrance width of 60cm

⑤ Table

Movable tables and chairs
Size of chair seat - 44cm

⑥ Table

Table leg in middle
Tabletop - 73cm / Under tabletop - 72cm

⑦ Aisle

Safe passage for manual wheelchair
Aisle width - 90cm

⑧ Table

Wheelchair accessible to Rotating Serving Table

⑨ Restroom

No accessible restroom
Entrance width - 66cm

Additional Information

Manual wheelchair user

Some private rooms are not wheelchair accessible.
 There is no multipurpose toilet inside the restaurant but you can ask the staff for directions to the nearby multipurpose toilets.
 There is no parking lot at the restaurant.

Specialties *The simplified item name below may differ from the actual name on the menu
Chinese food

Chinese lunch set

Tintin noodles

Chinese tea, sesame dumplings & sherbet

Accessibility Information

- Straw**
- Spoon Fork**
- Light plate / cup**
- Can be thinly cut**
- Minced food**
- Thickened food**
- Check payable at table**
- Accommodates for food allergies**
- Wheelchair charging**
- Braille menu**
- Writing service**

Tourist Information

- Vegetarian food negotiable**
- Muslim Accommodates for Muslims**
- Wi-Fi Free**
- Menu with pictures**
- Translation device**
- Finger pointing translation sheets**
- Multilingual website**
- Social media**
- Overseas website**
- Foreign language menu (English-Chinese)**
- Multilingual staff (English-Chinese)**

Accessible Route Information

Route from closest station

200m from Ueno Station Park Gate

- ① Go out of the station through the ramp at Park gate
- ② Cross the crosswalk, turn left and go 190m under the bridge
- ③ Cross the overpass and take elevator on the right to the first floor
- ④ Alight the elevator and go a little further to the destination

Route from stadium

none

Store Information

Ueno Bamboo Garden 1F, 1-52
Uenokoen, Taito-ku, Tokyo

03-5807-2288 03-5807-2275

<http://www.kamonka-tokyo.jp/>

11:00 - 15:30 (L.O. 15:00)
17:00 - 23:00 (L.O. 22:00)
Until 22:00 on Sat / Sun / Holiday (L.O. 21:00)

12/31

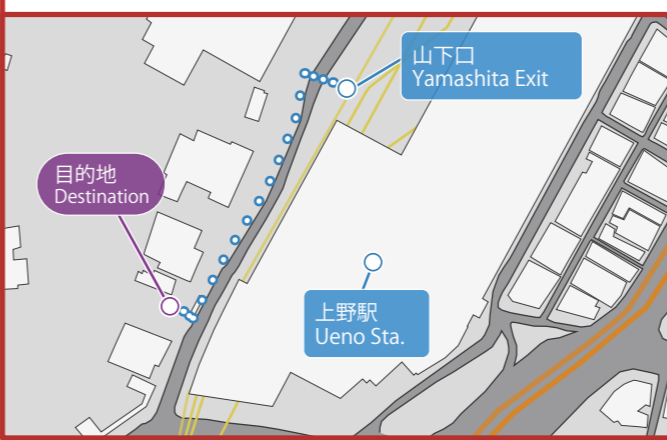
280 (Private room: 8)

Smoking area inside

Lunch: 2,000 - 3,000
Dinner: 4,000 - 6,000

Cash, Credit card, Electronic money (VISA, Master, Union, JCB, Amex, Diners Discover, Pay, LINE, Ali, WeChat)

Later Payment



For more details

<https://app.wheelog.com/map/custom/admin/map?spotId=1009>

Kurasushi Asakusa Rox store



- Doorway Step
Height ≤ 2cm
- Doorway
Width ≥ 80cm
- Accessibility
available
- Movable
chairs
- Restroom on
same floor

Conveyor belt sushi restaurant where you can enjoy the Japanese festival, or *matsuri*,-themed interior design

① Doorway

Private entrance from sidewalk

② Doorway

Double Glass Door at Exclusive Entrance
Entrance width - 90cm

③ Doorway

EV at Commercial Complex also available for use

④ Doorway

At entrance

⑤ Doorway

Slope from 4F of Commercial Complex
Slope width - 100cm

⑥ Interior

Enough space in hallway for 2 wheelchairs

⑦ Table

Wheelchair accessible booth
Size of chair seat - 43cm

⑧ Table

Easy access to table / Movable wall
Tabletop - 73cm / Under tabletop - 67cm

⑨ Restroom

Accessible restroom on the same floor
Handrail: Movable (L) / Fixed (R)

Additional Information

There are booths that can accommodate wheelchairs and the chairs at the counter can be moved.
The language(s) each staff member can speak are indicated on their nameplates.
There is one handicap parking space on the B2 level of the parking lot in the building

Manual wheelchair user

Specialties

*The simplified item name below may differ from the actual name on the menu

Japanese food



Sushi



Dessert



Grilled Eel Rice Bowl & Udon

Accessibility Information

- Straw
- Spoon Fork
- Light plate / cup
- Can be thinly cut
- Minced food
- Thickened food
- Check payable at table
- Accommodates for food allergies
- Wheelchair charging
- Braille menu
- Writing service

Tourist Information

- Vegetarian food negotiable
- Muslim Accommodates for Muslims
- Wi-Fi Free
- Menu with pictures
- Translation device
- Finger pointing translation sheets
- Multilingual website
- Social media
- Overseas website
- Foreign language menu (English·Chinese·Korean)
- Multilingual staff (English·Chinese·Vietnamese)

Accessible Route Information

Route from closest station

- 80m from Tsukuba Express Asakusa Station**
- Take the elevator at A1 exit to the first floor
 - Alight the elevator, turn left, cross 1 crosswalk and go 80m
 - The destination is on 4F at Commercial Complex on the left

- 650m from Ginza Line Asakusa Station**
- Take the elevator at 1 exit to the first floor
 - Alight the elevator, turn left to Kaminarimon street
 - Turn right on Kaminarimon street and go 450m
 - Turn right at the 6th junction and go 180m
 - Cross the crosswalk at the junction and Commercial Complex on the right
 - The destination is on 4F at Commercial Complex

Route from stadium

none



Store Information

- Asakusa ROX 4F, 1-25-15 Asakusa, Taito-ku, Tokyo
- 03-5830-6106
- <http://www.kura-corporo.co.jp/store/detail-cp/530/>
- 11:00 - 23:00
- Open all year round
- Non-smoking
- 272 (Counter: 8, Wheelchair accessible Table: 1)
- 1,000 - 2,000
- Cash, Credit card, Electronic money (VISA, Master, JCB, Amex, Diners, Discover, Pay, LINE, Rakuten)
- Later Payment

For more details

<https://app.wheelog.com/map/custom/admin/map?spotId=34467>



Obon de Gohan

Yodobashi Akiba

- Doorway Step Height ≤ 2cm
- Doorway Width ≥ 80cm
- Accessibility available
- Movable chairs
- Restroom on same floor



Café-style Japanese restaurant that serves home cooked-style set meals, accessible directly from Akihabara Station



① Inside
Accessible elevator



② Exterior
Located on 8F of Yodobashi Akiba Bldg.



③ Doorway
Open entrance with no steps
Entrance width - 180cm



④ Interior
Enough turning space for wheelchair
Aisle width - 110cm



⑤ Table
Movable tables and chairs
Size of chair seat - 45cm



⑥ Table
Table leg in middle
Tabletop - 72cm / Under tabletop - 68cm



⑦ Restroom
Manual Sliding door



⑧ Restroom
Accessible restroom on the same floor
Handrail: Movable (L) / Fixed (R)



⑨ Parking Lot
10 Disability Parking available

Additional Information

There is a multipurpose toilet on the same floor.
There are two handicap parking spaces on each level of the parking lot and 10 parking spaces in total from level B2 to B6 in the same building. Please ask the staff for a drinking straw.

Portable electric wheelchair user

Specialties

*The simplified item name below may differ from the actual name on the menu

Japanese food



Japanese-style pork set meal



Tuna cutlet



Crepe

Accessibility Information

- Straw
- Spoon Fork
- Light plate / cup
- Can be thinly cut
- Minced food
- Thickened food
- Check payable at table
- Accommodates for food allergies
- Wheelchair charging
- Braille menu
- Writing service

Tourist Information

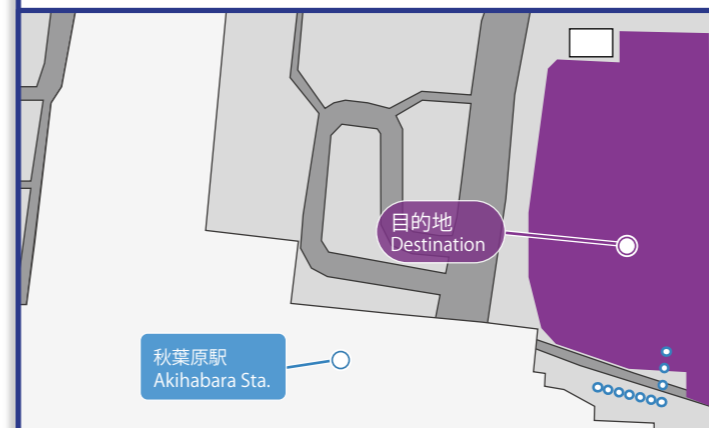
- Vegetarian food negotiable
- Muslim Accommodates for Muslims
- Wi-Fi Free
- Menu with pictures
- Translation device
- Finger pointing translation sheets
- Multilingual website
- Social media
- Overseas website
- Foreign language menu (English)
- Multilingual staff

Accessible Route Information

- Route from closest station**
50m from Akihabara Station Showa-dori Gate
① From the Showa-dori gate, go to the electronics store on the left
② The destination is on 8F in the electronics store
- Route from stadium**
none

Store Information

- Yodobashi Akiba 8F, 1-1
Kandahanaoka-cho, Chiyoda-ku, Tokyo
- 03-3526-2596
- <https://byo.co.jp/brand/detail.html?pdid=1023>
- 11:00 - 23:00 (L.O. 22:30)
Lunch: L.O. 15:00
- Open all year round
- Non-smoking
- 66
- Lunch: 1,000 - 1,500
Dinner: 1,000 - 1,500
- Cash, Credit card, Electronic money (VISA, Master, Union, JCB, Amex, Discover, Edy, iD, LINE, Ali, WeChat)
- Later Payment



For more details

<https://app.wheelog.com/map/custom/admin/map?spotId=39129>

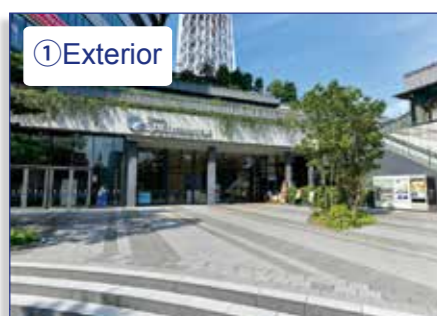


Tsukishima Monjya

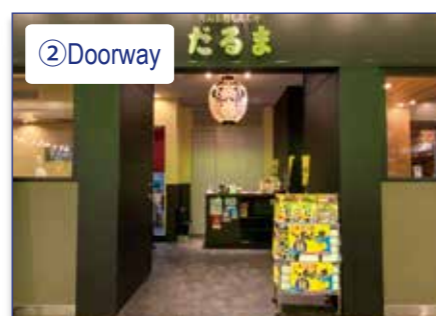
Daruma TOKYO Solamachi

Doorway Step
Height ≤ 2cmDoorway
Width ≥ 80cmAccessibility
availableMovable
chairsRestroom on
same floor

Monjya (less solidified version of okonomiyaki) restaurant inside Tokyo Sky Tree



① Exterior

Located on 7F of Tokyo SkyTree
Town Solamachi East yard

② Doorway

Open entrance with no steps
Entrance width - 140cm

③ Aisle

Safe passage for manual wheelchair
Aisle width - 90cm

④ Table

Movable chairs
Size of chair seat - 42cm

⑤ Table

Equipment under top plate
Tabletop - 70cm / Under tabletop - 66cm

⑥ Interior

Step to Tatami room



⑦ Parking Lot

10 Disability Parking available



⑧ Restroom

Accessible restroom on the same floor
Push-button Door

⑨ Restroom

Handrail: Fixed (L) / Movable (R)

Additional Information

The monjya will be cooked by the restaurant staff.
There are many booths and table seating where the chairs can be moved.
A multipurpose toilet is available on the same floor and there is also disabled parking on the premises.

Portable electric wheelchair user

Specialties

*The simplified item name below may differ from the actual name on the menu

Japanese food



Ingredients for Monjayaki / Okonomiyaki



Monjya



Okonomiyaki

Accessibility Information



Straw

Spoon
ForkLight
plate / cupCan be
thinly cutMinced
foodThickened
foodCheck
payable
at tableAccommodates
for food
allergiesWheelchair
chargingBraille
menuWriting
service

Tourist Information

Vegetarian
food
negotiable

Muslim

Accommodates
for Muslims

Wi-Fi

Menu with
picturesTranslation
deviceFinger
pointing
translation
sheetsMultilingual
websiteSocial
mediaOverseas
websiteForeign language
menu
(English)Multilingual staff
(English)

Accessible Route Information

Route from closest station

40m from Oshiage Station B3 Exit

- Take the elevator at exit B3 to the first floor
- Alight the elevator, turn left and go up the slope at Commercial Complex
- The destination is on 7F in the Complex

200m from Tokyo Sky Tree Station

- Take the elevator at exit A1 to the first floor
- Alight the elevator, turn left, cross the crosswalk and go 80m
- The destination is on 4F in Commercial Complex on the left

Route from stadium

none



Store Information

Tokyo SkyTree Town Solamachi East
yard 7F, 1-1-2 Oshiage, Sumida-ku,
Tokyo

03-5809-7408 03-5809-7408

<http://monjadaruma.com/>

10:30 - 23:00 (F.L.O. 22:00 / D.L.O. 22:30)

Open all year round (Until 21:00 on 12/31)

Non-smoking

72 (Table: 60, Hori-gotatsu:
low table over a hole in the floor:12)

2,000 - 3,000

Cash, Credit card, Electronic money
(VISA, Master, Union, JCB, Amex,
Diners, Discover, Ali, WeChat)

Later Payment

For more details

[https://app.wheelog.com/map/
custom/admin/map?spotId=18483](https://app.wheelog.com/map/custom/admin/map?spotId=18483)



Yoshinoya oshiage

- Doorway Step Height ≤ 2cm
- Doorway Width ≥ 80cm
- Accessibility available
- Movable chairs
- Restroom on same floor



Gyudon (beef on rice) chain restaurant established in the Meiji era with over 1,000 locations in Japan. The Oshiage location is close to Tokyo Sky Tree

① Exterior

Located along bus route

② Doorway

Step eliminating block / Automatic door
Steps 12cm / Entrance width - 90cm

③ Aisle

Enough space in hallway for 2 wheelchairs
Aisle width - 150cm

④ Table

Movable tables and chairs
Size of chair seat - 44cm

⑤ Table

Table leg in middle
Tabletop - 73cm / Under tabletop - 70cm

⑥ Counter

Counter Height 73cm

⑦ Aisle

Step to restroom
Step 17.5cm

⑧ Interior

Return tray counter

⑨ Restroom

No accessible restroom
Entrance width - 48cm / Step 6.5cm

Additional Information

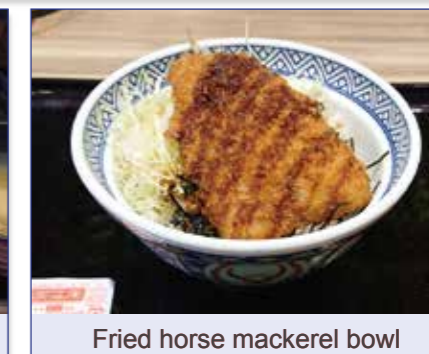
Orders are taken first at the cashier counter.
Staff can support those in wheelchairs who are by themselves to their seat and there are annotations concerning allergens in the menu. However, there is no parking lot at the restaurant.

Manual wheelchair user

Specialties

*The simplified item name below may differ from the actual name on the menu

Japanese food



Accessibility Information

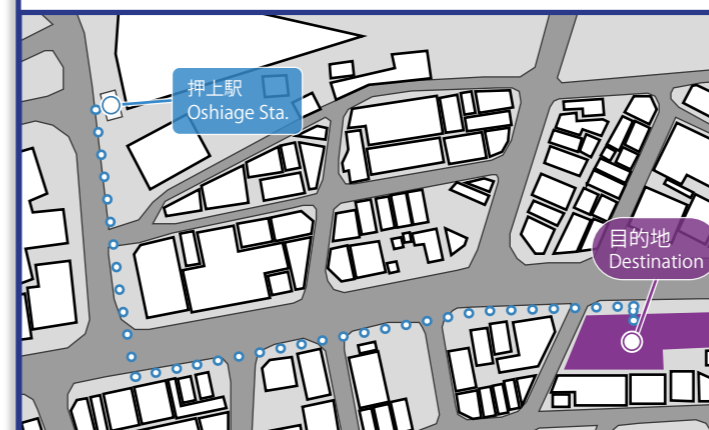
- Straw
- Spoon Fork
- Light plate / cup
- Can be thinly cut
- Minced food
- Thickened food
- Check payable at table
- Accommodates for food allergies
- Wheelchair charging
- Braille menu
- Writing service

Tourist Information

- Vegetarian food negotiable
- Muslim Accommodates for Muslims
- Wi-Fi Free
- Menu with pictures
- Translation device
- Finger pointing translation sheets
- Multilingual website
- Social media
- Overseas website
- Foreign language menu (English·Chinese·Korean)
- Multilingual staff

Accessible Route Information

- Route from closest station**
- 260m from Oshiage Station Exit A1**
- Take the elevator at exit A1 to the first floor
 - Alight the elevator, turn left, cross the crosswalk and go 80m
 - Cross the crosswalk at the junction, turn left, cross 4 more crosswalks and go 180m
 - The destination is on the right
- Route from stadium**
- none



Store Information

- 1-19-1 Oshiage, Sumida-ku, Tokyo
- 03-5631-2220
- https://stores.yoshinoya.com/ysn_061419
- 5:00 - 26:00
- Open all year round
- Non-smoking
- 40
- ~ 1,000
- Cash, Credit card, Electronic money (Suica, WAON, nanaco, Edy, iD, QUIC, Pay, LINE, Ali, WeChat)
- Advance Payment

For more details

<https://app.wheelog.com/map/custom/admin/map?spotId=33936>

