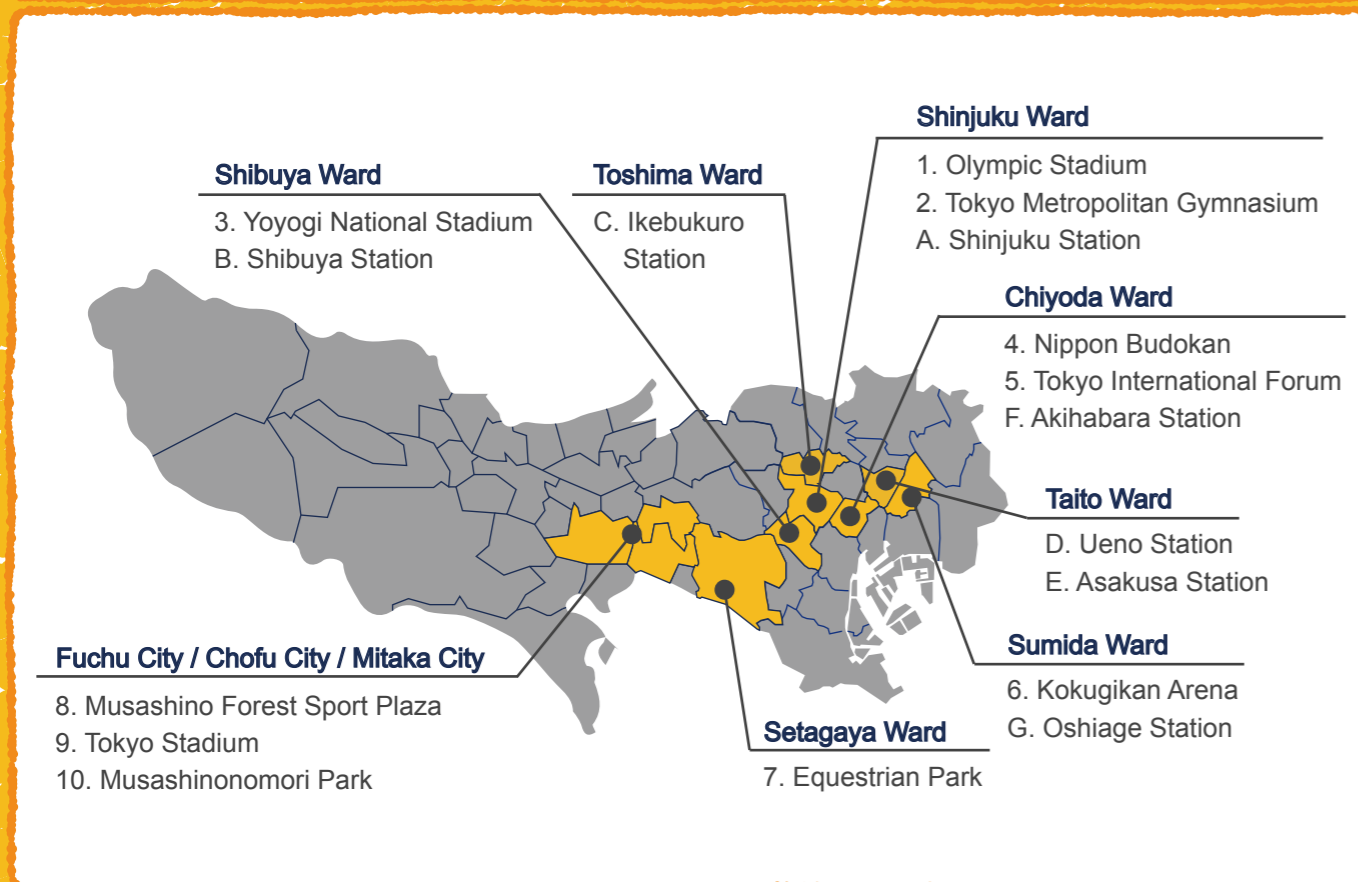


Heritage Zone 1



Opening hours, regular holidays, number of seats, etc. may differ from those listed due to the effects of COVID-19. Please check with the store in advance when you visit.

| Map Number | Restaurant name | Category | Page |
|------------|--|---------------|------|
| 1 ~ 2 | GOOD MORNING CAFE NOWADAYS | Western | P.14 |
| 1 ~ 2 | Le Rire | Western | P.16 |
| 1 ~ 2 | SHAKE SHACK | Western | P.18 |
| 1 ~ 2 | Cafe Shakey's | Cafe | P.20 |
| 1 ~ 2 | TORAYA | Cafe | P.22 |
| 3 | Yasaiya-Mei | Japanese | P.24 |
| 3 | NATARAJ | International | P.26 |
| 3 | ECO FARM CAFE 632 | Cafe | P.28 |
| 3 | CAFÉ Mori no Terrace | Cafe | P.30 |
| 4 | MANJUEN | Chinese | P.32 |
| 4 | SAPANA | International | P.34 |
| 5 | TAMASAKA | Japanese | P.36 |
| 5 | Kayou | Japanese | P.38 |
| 5 | NANA | Japanese | P.40 |
| 5 | Nanko Resthouse | Japanese | P.42 |
| 5 | A16 | Western | P.44 |
| 5 | The Lobby Lounge | Western | P.46 |
| 5 | LA MÈRE POULARD TOKYO | Western | P.48 |
| 5 | mango tree Tokyo | International | P.50 |
| 5 | DEAN & DELUCA CAFES | Cafe | P.52 |

Checklist / Heritage Zone 1



| Restaurant name | Doorway Step Height ≤ 2cm | Doorway Width ≥ 80cm | Accessibility available | Movable chairs | Restroom on same floor | Wheelchair charging | Writing service | Accommodates for food allergies | Free Wi-Fi | Multilingual website | Foreign language menu | Page |
|--|---------------------------|----------------------|-------------------------|----------------|------------------------|---------------------|-----------------|---------------------------------|------------|----------------------|-----------------------|------|
| GOOD MORNING CAFE NOWADAYS | ● | ● | ● | ● | | ● | ● | ● | ● | | ● | P.14 |
| Le Rire | ● | | ● | ● | | ● | ● | ● | ● | ● | ● | P.16 |
| SHAKE SHACK | ● | ● | ● | ● | ● | | ● | ● | ● | | ● | P.18 |
| Cafe Shakey's | ● | ● | ● | ● | | ● | ● | ● | ● | ● | | P.20 |
| TORAYA | ● | ● | ● | ● | ● | ● | ● | ● | | ● | ● | P.22 |
| Yasaiya-Mei | | | ● | ● | | | ● | ● | | | ● | P.24 |
| NATARAJ | ● | ● | ● | ● | | ● | | ● | ● | ● | ● | P.26 |
| ECO FARM CAFE 632 | ● | ● | ● | ● | ● | ● | ● | ● | | | ● | P.28 |
| CAFÉ Mori no Terrace | ● | ● | ● | ● | ● | | ● | ● | ● | ● | ● | P.30 |
| MANJUN | ● | ● | ● | ● | | ● | ● | ● | ● | ● | ● | P.32 |
| SAPANA | ● | ● | ● | ● | | ● | ● | ● | ● | ● | ● | P.34 |
| TAMASAKA | ● | ● | ● | ● | ● | ● | ● | ● | | ● | ● | P.36 |
| Kayou | ● | ● | ● | ● | ● | ● | ● | ● | ● | | ● | P.38 |
| NANA | ● | ● | ● | ● | ● | | ● | | | | ● | P.40 |
| Nanko Resthouse | ● | ● | ● | ● | | | ● | ● | ● | | ● | P.42 |
| A16 | ● | ● | ● | ● | ● | | ● | ● | | ● | ● | P.44 |
| The Lobby Lounge | ● | ● | ● | ● | | | ● | ● | ● | ● | ● | P.46 |
| LA MÈRE POULARD TOKYO | ● | ● | ● | ● | | ● | ● | ● | ● | | ● | P.48 |
| mango tree Tokyo | ● | ● | ● | ● | ● | ● | ● | ● | | | ● | P.50 |
| DEAN & DELUCA CAFES | ● | ● | ● | ● | ● | ● | ● | ● | ● | | ● | P.52 |

GOOD MORNING CAFE NOWADAYS



Doorway Step
Height ≤ 2cm



Doorway
Width ≥ 80cm



Accessibility
available



Movable
chairs



Restroom on
same floor

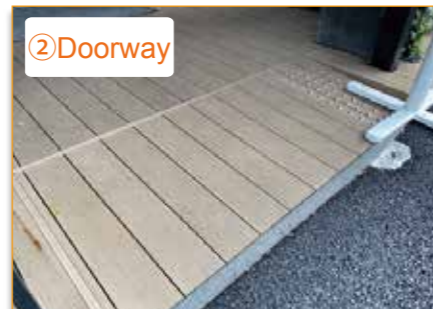
Open-air cafe serving breakfast, lunch and dinner

① Exterior



Cafe located along Gaien-Nishidori

② Doorway



Steps at entrance with accessible path

③ Doorway



Hinged (pull open) door / No steps
Entrance width - 80cm

④ Interior



No steps

⑤ Interior



Enough space in hallway for 2 wheelchairs

⑥ Interior



Enough turning space for wheelchair

⑦ Table



Movable tables and chairs
Tabletop - 73cm / Under tabletop - 70cm

⑧ Table



Table legs on both sides
Size of chair seat - 46cm

⑨ Terrace



No steps in the terrace

Additional Information

There is a general-use toilet inside the restaurant, and a multipurpose toilet located at the nearest station.
No parking lot in the vicinity.

Manual wheelchair user

Specialties

*The simplified item name below may differ from the actual name on the menu

Western food



Salisbury steak



Ham steak

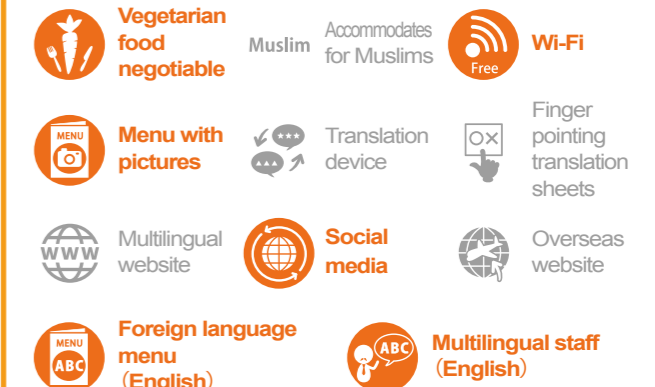


Chiffon cake

Accessibility Information



Tourist Information



Accessible Route Information

Route from closest station

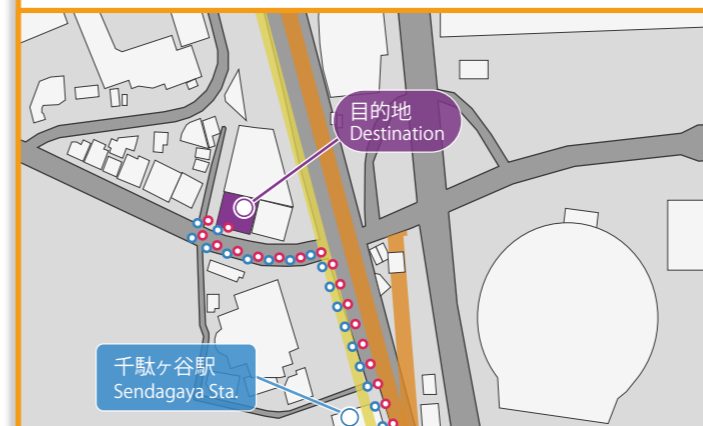
350m from Sendagaya Station

- From the ticket gate, go left, turn left at the junction and go 130m
- Go along the road, cross the junction, and keep going another 90m
- Turn left at the junction and go 80m
- The destination is on the right after crossing 2 more junctions

Route from stadium

460m from Olympic Stadium

- Head for Sendagaya Station from the stadium
- Cross an junction, turn right and go 130m
- Go along the road, cross the junction, and go 90m
- Turn left at the junction, and go 80m
- The destination is on the right after crossing 2 more intersections



Store Information

- Briliaist Sendagaya 1F, 31-4
Daikyo-cho, Shinjuku-ku TokyoF
- 03-5362-7460 03-5362-7470
- <https://nowadays.tokyo/>
- Mon - Fri: 7:00 - 11:00 (L.O. 10:30)
11:00 - 15:00 (L.O. 14:30)
18:00 - 23:30
(F.L.O. 22:30 / D.L.O. 23:00)
- Sat / Sun / Holiday: 8:00 - 11:00 (L.O. 10:30)
11:00 - 15:00 (L.O. 14:30)
15:00 - 17:00
17:00 - 23:00
(F.L.O. 22:00 / D.L.O. 22:30)
- Open all year round
- Separate smoking area available
- 115席
- Lunch: 1,200 - 1,300
Dinner: 5,000
- Cash, Credit card, Electronic money
(VISA, Master, JCB, Amex, Diners, Pay, Edy, iD, QUIC)
- Later Payment

For more details

<https://app.wheelog.com/map/cus-tom/admin/map?spotId=34324>



Le Rire



Doorway Step Height ≤ 2cm



Doorway Width ≥ 80cm



Accessibility available



Movable chairs



Restroom on same floor



French restaurant serving dishes using domestic ingredients directly from the Toyosu market



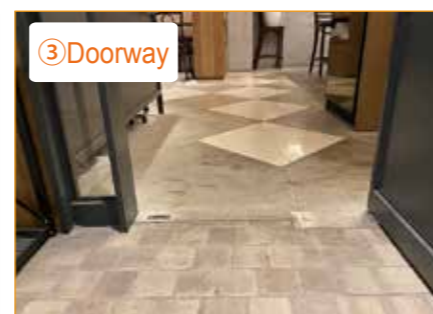
① Exterior

Take EV to B1F



② Doorway

Hinged (pull open) door / No steps



③ Doorway

Entrance width - 78cm



④ Doorway

No steps



⑤ Interior

Aisle width - 125cm



⑥ Table

Table leg in middle
Size of chair seat - 47cm



⑦ Table

Tabletop - 72cm / Under tabletop - 69cm



⑧ Interior

Movable partition between room and aisle



⑨ Restroom

Entrance width - 55cm

Additional Information

Manual wheelchair user

Please ask about having food chopped up, thickened or Muslim requirements at the time of reservation except for lunch on weekdays. There is a multipurpose toilet located at the nearest station. All staff can communicate using simple sign language. There is no parking lot at the restaurant and the parking lot across the road has no handicap parking.

Specialties

*The simplified item name below may differ from the actual name on the menu

Western food



Grilled chicken with garlic butter



Fresh fish poeler



Course meal

Accessibility Information

- Straw
- Spoon Fork
- Light plate / cup
- Can be thinly cut
- Minced food
- Thickened food
- Check payable at table
- Accommodates for food allergies
- Wheelchair charging
- Braille menu
- Writing service

Tourist Information

- Vegetarian food negotiable
- Muslim Accommodates for Muslims
- Wi-Fi Free
- Menu with pictures
- Translation device
- Finger pointing translation sheets
- Multilingual website
- Social media
- Overseas website
- Foreign language menu (English)
- Multilingual staff (English)

Accessible Route Information

Route from closest station

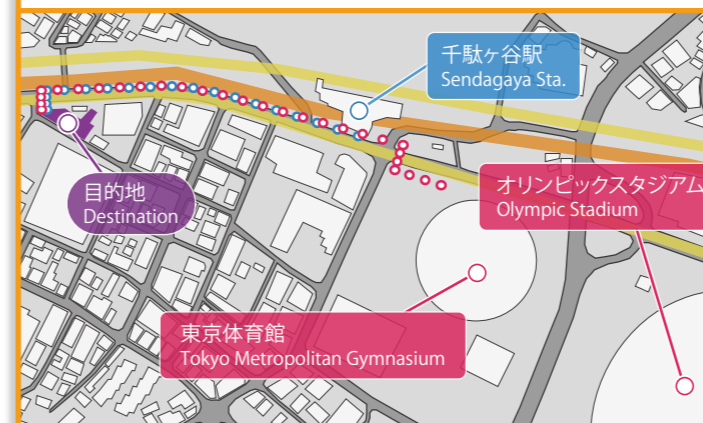
500m from Sendagaya Station

- From the ticket gate, go right and go 350m
- Turn left at the 1st signal and cross 2 crosswalks
- The destination is on the B1 floor of the building

Route from stadium

700m from the Olympic Stadium

- Out from the stadium to Sendagaya Station
- Go 350m past Sendagaya Station
- Turn left at the 1st signal and cross 2 crosswalks
- The destination is on the B1 floor of the building



Store Information

Monparte Kitasando B1F, 4-19-12 Sendagaya, Shibuya-ku, Tokyo

03-6447-4171

<https://www.leverdurier.jp/lerire/>

11:30 - 14:30 (L.O. 14:00)
17:00 - 22:30 (L.O. 21:30)

Sun

Non-smoking

35

Lunch: 1,500 - 2,000
Dinner: 2,000 - 3,000

Cash, Credit card, Electronic money (VISA, Master, Union, JCB, Amex, Diners, Discover, Suica, Ali, Air)

Later Payment

For more details

<https://app.wheelog.com/map/customer/admin/map?spotId=34235>



SHAKE SHACK Gaien

- Doorway Step Height ≤ 2cm
- Doorway Width ≥ 80cm
- Accessibility available
- Movable chairs
- Restroom on same floor



Hamburger restaurant originating from New York City surrounded by *gingko* trees

| | | |
|---|--|---|
| <p>① Exterior</p> <p>Surrounded by lines of ginkgo Trees at Jingu Gaien</p> | <p>② Doorway</p> <p>3cm step in front of slope</p> | <p>③ Doorway</p> <p>Gentle slope</p> |
| <p>④ Terrace</p> <p>Open terrace seating</p> | <p>⑤ Interior</p> <p>10cm steps to other floors</p> | <p>⑥ Counter</p> <p>Order counter</p> |
| <p>⑦ Table</p> <p>Table beside the counter Tabletop - 75cm / Under tabletop - 70cm</p> | <p>⑧ Restroom</p> <p>Accessible restroom on the same floor Pull-open door</p> | <p>⑨ Restroom</p> <p>Handrail: Fixed (L) / Movable (R)</p> |

Additional Information

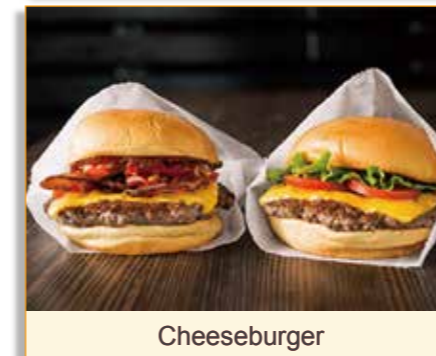
The restaurant has two floors and there are two 10cm-high steps towards the back but staff will assist those in wheelchairs. The multipurpose toilet has a wide entrance and a hand dryer installed in a user-friendly location. There is no parking lot at the restaurant.

Manual wheelchair user

Specialties

*The simplified item name below may differ from the actual name on the menu

Western food



Accessibility Information

- Straw
- Spoon Fork
- Light plate / cup
- Can be thinly cut
- Minced food
- Thickened food
- Check payable at table
- Accommodates for food allergies
- Wheelchair charging
- Braille menu
- Writing service

Tourist Information

- Vegetarian food negotiable
- Muslim Accommodates for Muslims
- Wi-Fi Free
- Menu with pictures
- Translation device
- Finger pointing translation sheets
- Multilingual website
- Social media
- Overseas website
- Foreign language menu (English)
- Multilingual staff (English)

Accessible Route Information

Route from closest station

- 660m from Aoyama-itcho Station Exit No. 5**
- Take the elevator at exit No. 5 to the first floor
 - Alight the elevator, turn left, and then turn left once again at the junction and go 300m
 - Cross 3 crosswalks, cross another crosswalk on the right and go 200m
 - Cross the crosswalk at the street with Ginkgo trees, turn left and the destination is on the right

Route from stadium

- 30m from Olympic Stadium**
- Turn right from the stadium and the destination is on the right



Store Information

- 2-1-15 Kitaoyama, Minato-ku, Tokyo
- 03-6455-5409
- <https://www.shakeshack.jp/location/gaien>
- 11:00 - 22:30 (L.O. 22:00)
- No weekly holidays
- Non-smoking
- 167
- Lunch: 1,000 - 2,000
- Cash, Credit card (VISA, Master, JCB, Amex)
- Advance Payment

For more details

<https://app.wheelog.com/map/customer/admin/map?spotId=252>



Cafe Shakey's



- Doorway Step**
 Height ≤ 2cm
- Doorway Width**
 ≥ 80cm
- Accessibility**
 available
- Movable chairs**
- Restroom on same floor**

Pizzeria with open kitchen and kiln-baked pizza

① Exterior

Located in Meiji Jingu Gaien

② Doorway

Hinged (pull open) door / No steps
Entrance width - 80cm

③ Interior

Enough turning space for wheelchair
Aisle width - 130cm

④ Table

Movable tables and chairs
Tabletop - 70cm / Under tabletop - 67cm

⑤ Interior

A 13cm step in the passageway
Staff support

⑥ Terrace

Access to terrace seating from outside street

⑦ Terrace

Terrace is wheelchair accessible

⑧ Restroom

No accessible restroom

⑨ Restroom

Not enough space for wheelchair

Additional Information

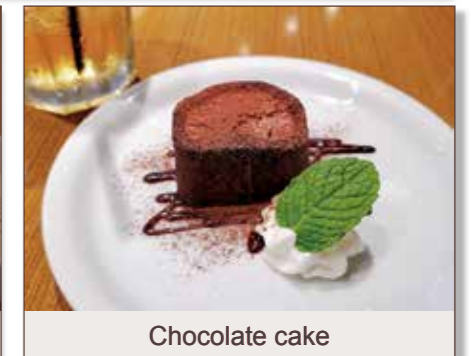
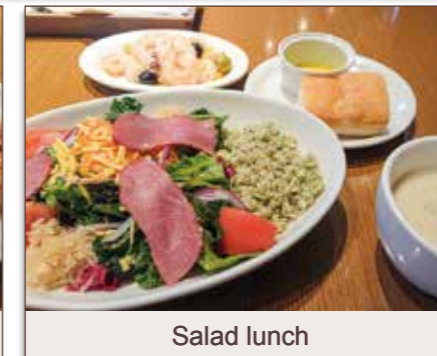
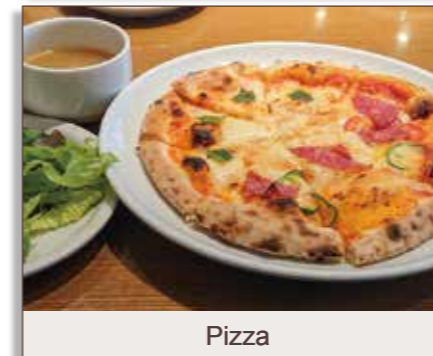
The inside of the restaurant is all carpeted except for the aisles and there are some steps.
A multipurpose toilet is located at the nearest station.
There are two wide parking spaces in the affiliated parking lot next to the restaurant but no handicap spaces.

Manual wheelchair user

Specialties

*The simplified item name below may differ from the actual name on the menu

Cafe



Accessibility Information

- Straw**
- Spoon Fork**
- Light plate / cup**
- Can be thinly cut**
- Minced food**
- Thickened food**
- Check payable at table**
- Accommodates for food allergies**
- Wheelchair charging**
- Braille menu**
- Writing service**

Tourist Information

- Vegetarian food negotiable**
- Muslim Accommodates for Muslims**
- Wi-Fi Free**
- Menu with pictures**
- Translation device**
- Finger pointing translation sheets**
- Multilingual website**
- Social media**
- Overseas website**
- Foreign language menu**
- Multilingual staff (English)**

Accessible Route Information

- Route from closest station**
- 120m from Shinanomachi Station**
- ① From the ticket gate, go right and cross the crosswalk
 - ② Cross the crosswalk at the junction and turn left
 - ③ Cross the crosswalk and go 60m
 - ④ Turn left on the corner, cross the crosswalk and the destination is on the left
- Route from stadium**
- 550m from the Olympic Stadium**
- ① From the stadium, cross the junction and go 120m
 - ② Turn left at the junction, cross the crosswalk and go 300m
 - ③ Turn left on the corner, and go 20m
 - ④ Turn left on the corner, go 50m and the restaurant is on the left



Store Information

- Meiji Jingu Gaien Rest Area 1F, 14-1 Kasumigaoka-machi, Shinjyuku-ku, Tokyo
- 03-3796-0522 03-3796-0522
- <http://rkfs.co.jp/cafeshakeys.html>
- 11:00 - 23:00 (Last order: 22:00)
*Opening hours vary depending on the season
- 12/30, 12/31
- Non-smoking
- 128
- Lunch: 1,000 - 2,000
Dinner: 2,000 - 3,000
- Cash, Credit card, Electronic money (VISA, Master, Union, JCB, Amex, Diners, Discover, Suica, WAON, Edy, iD)
- Later Payment

For more details

<https://app.wheelog.com/map/cus-tom/admin/map?spotId=33238>



TORAYA Akasaka



Doorway Step Height ≤ 2cm Doorway Width ≥ 80cm Accessibility available Movable chairs Restroom on same floor



A Japanese sweets restaurant established in the late Muromachi period that provides Japanese traditional sweets such as "Yokan" (jellied red bean paste)

| | | |
|---|--|---|
| <p>① Exterior</p> <p>Akasaka Store</p> | <p>② Doorway</p> <p>Automatic door / No steps Entrance width - 156cm</p> | <p>③ Interior</p> <p>Accessible Elevator</p> |
| <p>④ Interior</p> <p>2F Sales section Aisle width - 100cm</p> | <p>⑤ Interior</p> <p>Cafe space on 3F Chair seat 43cm</p> | <p>⑥ Counter</p> <p>Counter on 3F Tabletop - 68cm / Under tabletop - 62cm</p> |
| <p>⑦ Interior</p> <p>Gallery on the first basement floor. Exhibit contents change with season</p> | <p>⑧ Restroom</p> <p>Accessible restroom on 2F, 3F and B1F Handrail: Fixed (L) / Movable (R)</p> | <p>⑨ Parking Lot</p> <p>1 Disability Parking available</p> |

Additional Information

Multipurpose toilets are located on the second and third floor. Please ask about allergens and having food chopped up when you order. Please contact the restaurant in advance regarding any vegetarian and/or Muslim requirements. There is one handicap parking space available.

Manual wheelchair user

Specialties

*The simplified item name below may differ from the actual name on the menu

Cafe



Accessibility Information

| | | |
|------------------------|---------------------------------|---------------------|
| Straw | Spoon Fork | Light plate / cup |
| Can be thinly cut | Minced food | Thickened food |
| Check payable at table | Accommodates for food allergies | Wheelchair charging |
| Braille menu | Writing service | |

Tourist Information

| | | |
|---------------------------------|---------------------------------|------------------------------------|
| Vegetarian food negotiable | Muslim Accommodates for Muslims | Wi-Fi Free |
| Menu with pictures | Translation device | Finger pointing translation sheets |
| Multilingual website | Social media | Overseas website |
| Foreign language menu (English) | Multilingual staff (English) | |

Accessible Route Information

Route from closest station

580m from Akasaka-mitsuke Station Exit A
 ① Take the elevator at exit A to the first floor and go 500m
 ② Cross 5 crosswalks and the destination before the 6th crosswalk

Route from stadium

1.3km from the Olympic Stadium
 ① From the Stadium, go 180m along the left side of lined Ginkgo trees
 ② Turn left at the junction, cross 2 crosswalks and go 280m
 ③ Cross the crosswalk at the junction, go 850m
 ④ Cross 2 crosswalks at the junctions and the destination is on the corner



Store Information

4-9-22 Akasaka, Minato-ku, Tokyo
 03-3408-2331 03-3408-4135
<https://www.toraya-group.co.jp/toraya/shops/detail/?id=5>
 Mon - Fri: 8:30 - 19:00 (Meal) 11:00 - 18:30 (L.O. 18:00)
 Sat / Sun / Holiday: 9:30 - 18:00 (Meal) 11:00 - 17:30 (L.O. 17:00)
 ※Lunch: 11:30 - 14:30
 No weekly holidays
 Non-smoking
 53 (Inside: 42, Terrace: 11)
 1,000 - 1,500
 Cash, Credit card, Electronic money (VISA, Master, JCB, Amex, Ali, WeChat)
 Later Payment

For more details

<https://app.wheelog.com/map/cus-tom/admin/map?spotId=34171>



Yasaiya-Mei Omotesando Hills



- Doorway Step Height ≤ 2cm
- Doorway Width ≥ 80cm
- Accessibility available
- Movable chairs
- Restroom on same floor

Japanese restaurant that serves fresh vegetables delivered from contract farmers nationwide



① Exterior

Located on 3F of OMOTESANDO HILLS Main Bldg.



② Doorway

Open entrance with no steps



③ Aisle

Entrance width - 73cm
Two 15cm-Step Inside



④ Interior

Safe passage for manual wheelchair
Aisle width - 83cm



⑤ Interior

Movable tables and chairs
Size of chair seat - 44cm



⑥ Interior

Enough turning space for wheelchair



⑦ Table

Table leg in middle



⑧ Table

Table by the window
Tabletop - 74cm / Under tabletop - 69cm



⑨ Counter

Accessible counter seat
Tabletop - 72cm / Under tabletop - 65cm

Additional Information

There is a multipurpose toilet located on the second floor of the facility.
The third floor of the restaurant can be accessed from the second floor via a ramp.
There are two handicap parking spaces on the B4 level of the same facility.

Portable electric wheelchair user

Specialties

*The simplified item name below may differ from the actual name on the menu

Japanese food



Bagna cauda



Meat stuffed shiitake mushroom



Baked Caramel pudding

Accessibility Information

- Straw
- Spoon Fork
- Light plate / cup
- Can be thinly cut
- Minced food
- Thickened food
- Check payable at table
- Accommodates for food allergies
- Wheelchair charging
- Braille menu
- Writing service

Tourist Information

- Vegetarian food negotiable
- Muslim Accommodates for Muslims
- Wi-Fi Free
- Menu with pictures
- Translation device
- Finger pointing translation sheets
- Multilingual website
- Social media
- Overseas website
- Foreign language menu (English)
- Multilingual staff (English)

Accessible Route Information

Route from closest station

420m from Omote-sando Station Elevator Exit

- ① Take the elevator near exit A1 to the first floor
- ② Alight the elevator and go 50m
- ③ Cross 2 crosswalks at the junction to the other side of the street
- ④ Go 210m towards Meiji shrine
- ⑤ The destination is on 3F of the multicomplex on the left

Route from stadium

950m from Yoyogi National Stadium

- ① Turn right out from the site, go 200m
- ② Cross the crosswalk, turn left the corner and cross the crosswalk
- ③ Cross the crosswalk at the junction and go toward Omotesando
- ④ Cross 5 crosswalks, go 550m
- ⑤ The destination is on 3F of the multicomplex on the left



Store Information

OMOTESANDO HILLS Main Bldg. 3F,
4-12-10 Jingumae, Shibuya-ku, Tokyo

03-5785-0606 03-5785-0647

<http://www.eat-walk.com/mei>

11:00 - 16:30

Mon - Sat: 17:00 - 23:00

Sun / Holiday: 17:00 - 22:00

Open all year round

Non-smoking

50 (Table: 32, Counter: 18)

Lunch: 1,800
Dinner: 5,000

Cash, Credit card, Electronic money
(VISA, Master, Union, JCB, Amex, Diners, Discover, Suica, Edy, iD, QUIC, Pay, LINE, Ali)

Later Payment

For more details

<https://app.wheelog.com/map/custom/admin/map?spotId=34376>



Indian Vegetarian Restaurant

NATARAJ Harajuku



- Doorway Step
Height ≤ 2cm
- Doorway
Width ≥ 80cm
- Accessibility
available
- Movable
chairs
- Restroom on
same floor

Vegetarian Indian food restaurant that uses organic vegetables from its own farm

① Doorway

Entrance on the right from the elevator

② Doorway

Open entrance with no steps
Entrance width - 80cm

③ Interior

Enough turning space for wheelchair
Aisle width - 98cm

④ Table

Movable tables and chairs
Size of chair seat - 43cm

⑤ Table

Table leg in middle
Tabletop - 73cm / Under tabletop - 69cm

⑥ Counter

Movable chairs

⑦ Counter

Wheelchair accessible counter

⑧ Restroom

Step to restroom
Step 14cm

⑨ Restroom

No accessible restroom
Entrance width - 84cm

Additional Information

- There is circular counter seating for the curry buffet in the center of the restaurant that can seat wheelchairs.
- There is a multipurpose toilet on the B1 floor of the same building.
- There is no parking lot at the restaurant.

Manual wheelchair user

Specialties

*The simplified item name below may differ from the actual name on the menu

International food



Curry



Cheese nan



Curry set

Accessibility Information

- Straw
- Spoon Fork
- Light plate / cup
- Can be thinly cut
- Minced food
- Thickened food
- Check payable at table
- Accommodates for food allergies
- Wheelchair charging
- Braille menu
- Writing service

Tourist Information

- Vegetarian food negotiable
- Muslim Accommodates for Muslims
- Wi-Fi Free
- Menu with pictures
- Translation device
- Finger pointing translation sheets
- Multilingual website
- Social media
- Overseas website
- Foreign language menu (English)
- Multilingual staff (English)

Accessible Route Information

- Route from closest station**
- 220m from Meiji-jingumae Exit 6**
- ① Take the elevator at exit 6 to the first floor
 - ② Alight the elevator and do a U-turn to the junction
 - ③ Cross 2 crosswalks to the other side
 - ④ Pass by the office building and go 200m
 - ⑤ The destination is on 8F at the Plaza on the right

- Route from stadium**
- 750m from Yoyogi National Stadium**
- ① Turn right out from the site, go 200m
 - ② Cross the crosswalk, turn left the corner and cross the crosswalk
 - ③ Cross 2 crosswalks at the junction and go to the opposite side
 - ④ Turn left, cross the crosswalk and go 260m
 - ⑤ Turn right at the junction, go 170m
 - ⑥ The destination is in the Plaza on the right after crossing 2 crosswalks



Store Information

- Q plaza HARAJUKU 8F, 6-28-6
Jingumae, Shibuya-ku, Tokyo
- 03-6427-7515 03-6427-7516
- <http://www.nataraj.co.jp/>
- 11:30 - 23:00 (L.O. 22:30)
Buffet: 11:30 - 15:00
Lunch: 11:30 - 16:30
- New Year holidays (12/30 - 1/1)
- Non-smoking
- 80 (Dining hall: 60, Private room: 20)
- Lunch: 1,200 - 3,000
Dinner: 1,500 - 5,000
- Cash, Credit card, Electronic money (VISA, Master, Union, JCB, Amex, Pay)
- Later Payment

For more details

<https://app.wheelog.com/map/customer/admin/map?spotId=33993>



ECO FARM CAFE 632



- Doorway Step
Height ≤ 2cm
- Doorway
Width ≥ 80cm
- Accessibility
available
- Movable
chairs
- Restroom on
same floor

Bakery café that uses organic vegetables harvested at its own farm

① Exterior

Steps at entrance with access path

② Doorway

Automatic door / No steps
Entrance width - 105cm

③ Interior

Enough space in hallway for 2 wheelchairs
Aisle width - 200cm

④ Interior

Movable tables and chairs

⑤ Table

Photo showing sitting at square table
Tabletop - 71cm / Under tabletop - 68cm

⑥ Table

Photo showing sitting at round table
Size of chair seat - 45cm

⑦ Terrace

Steps to basement, mezzanine
and courtyard

⑧ Restroom

Accessible restroom on the same floor
Push-button Door

⑨ Restroom

Handrail: Fixed (L) / Fixed (R)

Additional Information

There are stairs and steps on the way to the basement, mezzanine, and courtyard seats, but the first floor is accessible by wheelchairs. The multipurpose toilet is in the restaurant. There is only a time-limited parking lot in the vicinity.

Manual wheelchair user

Specialties

*The simplified item name below may differ from the actual name on the menu

Cafe



Pasta



Original roast pork



Coffee

Accessibility Information

- Straw
- Spoon Fork
- Light plate / cup
- Can be thinly cut
- Minced food
- Thickened food
- Check payable at table
- Accommodates for food allergies
- Wheelchair charging
- Braille menu
- Writing service

Tourist Information

- Vegetarian food negotiable
- Muslim Accommodates for Muslims
- Wi-Fi Free
- Menu with pictures
- Translation device
- Finger pointing translation sheets
- Multilingual website
- Social media
- Overseas website
- Foreign language menu (English)
- Multilingual staff (English)

Accessible Route Information

Route from closest station

180m from Meiji-jingumae Station Exit No. 6

- ① Take the elevator at exit No. 6 to the first floor
- ② Turn around after alighting the elevator and head to the junction
- ③ Cross 2 crosswalks and go to the other side of the junction
- ④ Go another 90m along Meijidori street
- ⑤ Past Meiji-jingumae Station exit No. 7, turn right and go 50m
- ⑥ The destination is on the left

Route from stadium

750m from Yoyogi National Stadium

- ① Turn right from the site, and go 200m
- ② Cross the crosswalk, turn left the corner and cross another crosswalk
- ③ Cross 2 more crosswalks and at the junction, cross the road
- ④ Turn left, cross the crosswalk and go 260m
- ⑤ Turn right at the junction, and go a further 90m
- ⑥ Past Meiji-jingumae Station exit No. 7, turn right and go 50m
- ⑦ The destination is on the left



Store Information

Piazza Annex 1F, 6-32-10 Jingumae, Shibuya-ku, Tokyo

03-3498-0632 03-3499-0632

<https://www.piazza.co.jp/food/bakerycafe632.html>

9:00 - 11:00, 11:00 - 17:00, 17:30 - 23:00
Until 21:30 on Sun (L.O. 21:00)

New Year holidays (12/31 - 1/1)

Non-smoking

120 (Table: 110, Counter: 10)

Lunch: 630 - 1,800
Dinner: 2,000 - 3,500

Cash, Credit card (VISA, Master, Union, JCB, Amex, Diners, Discover)

Later Payment

For more details

<https://app.wheelog.com/map/customer/admin/map?spotId=33549>



CAFÉ Mori no Terrrace



- Doorway Step Height ≤ 2cm
- Doorway Width ≥ 80cm
- Accessibility available
- Movable chairs
- Restroom on same floor

Wooden Japanese style cafe on the grounds of the Meiji Shrine

① Exterior

CAFÉ Mori no Terrace

② Doorway

Installed Slope (9°)

③ Doorway

Automatic door / No steps

④ Doorway

Entrance width - 160cm

⑤ Interior

Enough turning space for wheelchair
Aisle width - 90~120cm

⑥ Counter

Accessible counter seat
Tabletop - 72cm / Under tabletop - 70cm

⑦ Table

Movable tables and chairs
Size of chair seat - 45cm

⑧ Cashier

Pay in advance with order
Hight 102cm

⑨ Restroom

Accessible restroom in the store
Handrail: Fixed (L) / Movable (R)

Additional Information

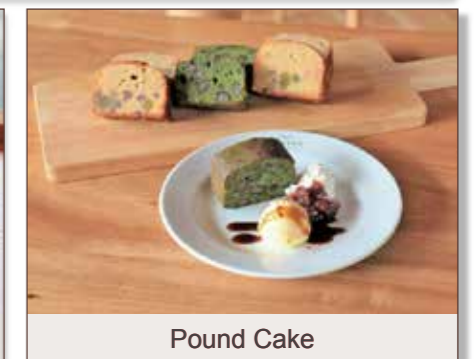
- The multipurpose toilet is in the restaurant.
- There is a food allergy guide on the menu.
- There are two parking lots on the grounds of the Meiji Shrine.

Manual wheelchair user

Specialties

*The simplified item name below may differ from the actual name on the menu

Cafe



Accessibility Information

- Straw
- Spoon Fork
- Light plate / cup
- Can be thinly cut
- Minced food
- Thickened food
- Check payable at table
- Accommodates for food allergies
- Wheelchair charging
- Braille menu
- Writing service

Tourist Information

- Vegetarian food negotiable
- Muslim Accommodates for Muslims
- Wi-Fi Free
- Menu with pictures
- Translation device
- Finger pointing translation sheets
- Multilingual website
- Social media
- Overseas website
- Foreign language menu (English)
- Multilingual staff (English)

Accessible Route Information

- Route from closest station**
500m from Harajuku Station Omotesando Exit
① From Omotesando exit, turn right and cross over Jingu bridge
② Turn right and go 60m
③ The destination is near the Harajuku Exit at the Meiji Shrine
- Route from stadium**
260m from Yoyogi National Stadium
① Turn right out from the site, go 200m
② Turn left at the junction, go 70m
③ The destination is near the Harajuku Exit of the Meiji Shrine



Store Information

- FOREST TERRACE MEIJI JINGU, 1-1 Yoyogikamizono-cho, Shibuya-ku, Tokyo
- 03-3379-9222 03-3379-9134
- <https://www.meijikinenkan.gr.jp/foresterrace/facility/moricafe.html>
- 9:00 - Until Meiji Jingu (Meiji shrine) closes (L.O.: 30 minutes prior to the closing)
- Conform to Meiji Jingu's closure
- Non-smoking
- 61
- 300 - 900
- Cash, Credit card, Electronic money (VISA, Master, Union, JCB, Amex, Diners, Discover, Suica)
- Advance Payment

For more details

<https://app.wheelog.com/map/customer/admin/map?spotId=34495>



Chinese cuisine

MANJUEN Hotel Grand Palace



Doorway Step
Height ≤ 2cm



Doorway
Width ≥ 80cm



Accessibility
available



Movable
chairs



Restroom on
same floor



Cantonese restaurant with a luxurious atmosphere

① Inside



Wheelchair-accessible elevator

② Exterior



Located on B1F of Hotel Grand Palace

③ Doorway



Open to public during business hours
Entrance width - 180cm

④ Interior



Enough space in hallway for 2 wheelchairs

⑤ Interior



Enough turning space for wheelchair
Aisle width - 130cm

⑥ Interior



105cm between tables

⑦ Table



Movable tables and chairs
Size of chair seat - 45cm

⑧ Table



Table legs on both sides
Tabletop - 72cm / Under tabletop - 68cm

⑨ Restroom



Accessible restroom on 1F of the bldg.
Handrail: Movable (L) / None (R)

Additional Information

The multipurpose toilet is located in the lobby on the first floor of the hotel. They have some menus with photos.

All staff members can speak English. There is a wide parking lot for two cars on the first and second basement floors hotel, but there is no disabled parking space and parking reservations cannot be made.

Manual wheelchair user

Specialties

*The simplified item name below may differ from the actual name on the menu

Chinese food



Cantonese cuisine lunch



Cantonese cuisine course



Seafood fried noodles

Accessibility Information



Straw



Spoon
Fork



Light
plate / cup



Can be
thinly cut



Minced
food



Thickened
food



Check
payable
at table



Accommodates
for food
allergies



Wheelchair
charging



Braille
menu



Writing
service

Tourist Information



Vegetarian
food
negotiable

Muslim

Accommodates
for Muslims



Wi-Fi



Menu with
pictures



Translation
device



Finger
pointing
translation
sheets



Multilingual
website



Social
media



Overseas
website



Foreign language
menu
(English)



Multilingual staff
(English)

Accessible Route Information

Route from closest station

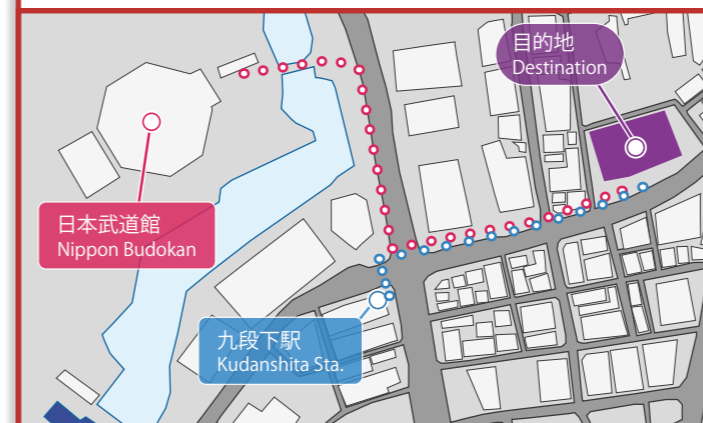
460m from Kudanshita Station Exit No. 6

- ① Take the elevator at exit no. 6 to the first floor
- ② Alight the elevator, turn left and cross 2 crosswalks at the junction
- ③ Turn right before the high-rise building and go 200m
- ④ Cross 2 crosswalks and the destination is on the B1 floor of the hotel

Route from stadium

650m from Nippon Budokan

- ① Turn left from the Budokan, turn right onto the street and go 200m
- ② Turn left at the junction, cross the crosswalk and go 200m
- ③ Cross 2 crosswalks and the destination is on the B1 floor of the hotel



Store Information

Hotel Grand Palace B1F, 1-1-1
Iidabashi, Chiyoda-ku, Tokyo

03-3264-1111 03-3264-2470

[https://www.grandpalace.co.jp/
restaurant/manjuen.html](https://www.grandpalace.co.jp/restaurant/manjuen.html)

11:30 - 14:00 (L.O. 13:45)
17:30 - 21:00 (L.O. 20:45)

Open all year round

Non-smoking

104

Lunch: 2,550 ~
Dinner: 7,130 ~

Cash, Credit card (VISA, Master, JCB,
Amex, Diners)

Later Payment

For more details

[https://app.wheelog.com/map/cus-
tom/admin/map?spotId=33421](https://app.wheelog.com/map/customer/admin/map?spotId=33421)



Asian Dining & Bar

SAPANA Palaceside



- Doorway Step**
 Height ≤ 2cm
- Doorway Width**
 ≥ 80cm
- Accessibility**
 available
- Movable chairs**
- Restroom**
 on same floor

Fusion restaurant serving international cuisine (from India, Nepal, Thailand, Vietnam, etc.)

① Exterior

Located on B1F of Palaceside Bldg.

② Doorway

Entrance width - 82cm

③ Doorway

Hinged (push open) door / No steps

④ Interior

No steps

⑤ Interior

Aisle width - 61cm

⑥ Interior

Enough turning space for wheelchair

⑦ Interior

Counter

⑧ Table

Movable tables and chairs
Size of chair seat - 45cm

⑨ Table

Table leg in middle
Tabletop - 70cm / Under tabletop - 67cm

Additional Information

The ramp leading to the entrance that can be used for wheelchairs is primarily for vendors so please ask in advance or ask the staff on the day if wheelchair access is required. Food can be thickened and please contact the restaurant regarding allergies, side dishes, chopping up of food and power for charging. There are two underground handicap parking spaces.

Manual wheelchair user

Specialties

*The simplified item name below may differ from the actual name on the menu

International food



Curry



Chicken



Fresh spring rolls

Accessibility Information

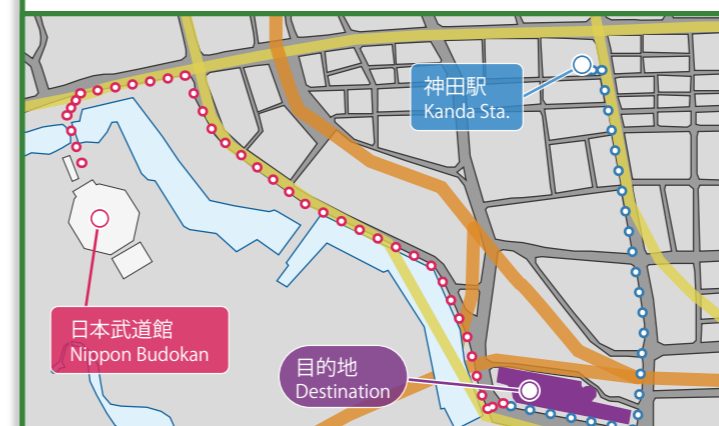
- Straw
- Spoon Fork
- Light plate / cup
- Can be thinly cut
- Minced food
- Thickened food
- Check payable at table
- Accommodates for food allergies
- Wheelchair charging
- Braille menu
- Writing service

Tourist Information

- Vegetarian food negotiable
- Muslim Accommodates for Muslims
- Wi-Fi Free
- Menu with pictures
- Translation device
- Finger pointing translation sheets
- Multilingual website
- Social media
- Overseas website
- Foreign language menu (English)
- Multilingual staff (English, Nepali, Thai, Hindi)

Accessible Route Information

- Route from closest station**
 660m from Jimbocho Station A8 Exit
 ① Take the elevator at A8 exit to the first floor and cross the crosswalk at the junction
 ② Cross 2 crosswalks at the junction and go 350m
 ③ Cross the crosswalk by the highway toll gate and go a further 40m
 ④ Turn right at the building and go 300m
 ⑤ Enter the building through the west front gate using a wheelchair lift
 ⑥ The destination is on B1. Request assistance over the intercom
- Route from stadium**
 1.3km from Nippon Budokan
 ① Turn left from the Budokan, turn right at the street, and go 200m
 ② Turn right at the junction, and go another 750m
 ③ Turn left at the junction, go to the West Main Entrance of the building and ride the wheelchair lift
 ④ The destination is on floor B1. Request assistance over the intercom if necessary



Store Information

- Palaceside Bldg. B1F, 1-1-1 Hitotsubashi, Chiyoda-ku, Tokyo
- 03-6269-9447 03-6269-9447
- <http://sapana-group.com/palaceside/>
- 11:00 - 16:00, 16:00 - 24:00
- Sun (Facility Holiday)
- Non-smoking
- 75
- Lunch: 1,000 - 2,000
Dinner: 3,000 - 4,000
- Cash, Credit card (VISA, Master, Union, JCB, Amex, Diners, Discover)
- Later Payment

For more details

<https://app.wheelog.com/map/cus-tom/admin/map?spotId=33783>



TAMASAKA Marunouchi



Doorway Step
Height ≤ 2cm



Doorway
Width ≥ 80cm



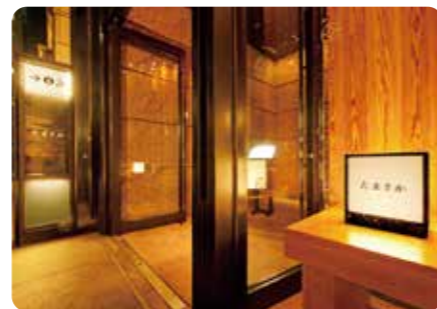
Accessibility
available



Movable
chairs



Restroom on
same floor



Japanese *kaiseki* restaurant serving dishes making the most of seasonal ingredients

① Exterior



Located in Marunouchi BRICK SQUARE

② Inside



Service EV at the end of hallway on 1F

③ Inside



Accessible Elevator

④ Interior



No steps

⑤ Counter



All counter seating except private rooms
Size of chair seat - 45cm

⑥ Interior



Safe passage for manual wheelchair
Aisle width - 120cm

⑦ Counter



Wheelchair accessible counter
Tabletop - 72cm / Under tabletop - 68cm

⑧ Private room



Table in private room

⑨ Restroom



Accessible restroom in the store
Handrail: Movable (L) / Fixed (R)

Additional Information

Handicap parking is available in the building and it is difficult to maneuver a wheelchair in the multipurpose toilet inside the restaurant.

Manual wheelchair user

Specialties

*The simplified item name below may differ from the actual name on the menu

Japanese food



Traditional Japanese course meal



Traditional Japanese course meal



Traditional Japanese meal brought in courses

Accessibility Information



Straw



Spoon
Fork



Light
plate / cup



Can be
thinly cut



Minced
food



Thickened
food



Check
payable
at table



Accommodates
for food
allergies



Wheelchair
charging



Braille
menu



Writing
service

Tourist Information



Vegetarian
food
negotiable



Accommodates
for Muslims



Wi-Fi
Free



Menu with
pictures



Translation
device



Finger
pointing
translation
sheets



Multilingual
website



Social
media



Overseas
website



Foreign language
menu
(English)



Multilingual staff
(English)

Accessible Route Information

Route from closest station

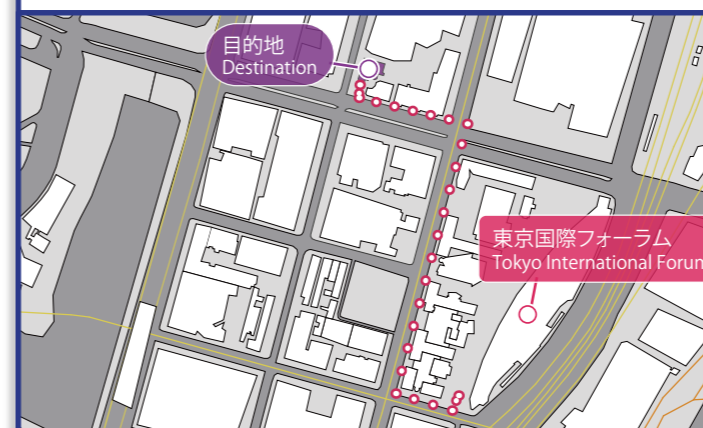
240m from Nijubashimae Station 3 Exit

- ① Take the elevator at 3 exit to the first floor
- ② Turn left out of the Plaza and go 110m
- ③ Turn left at the junction and go 120m
- ④ Cross the crosswalk at the junction to the fashion building
- ⑤ Take the elevator near patisserie in the building on the right to the second floor to the destination

Route from stadium

450m from the Tokyo International Forum

- ① Turn right out from the site and go 60m
- ② Turn right at the junction, go 250m
- ③ Go 110m by crossing 2 crosswalks at the junctions
- ④ Take the elevator near patisserie in the building on the right to the second floor to the destination



Store Information

Marunouchi BRICK SQUARE 2F, 2-6-1
Marunouchi, Chiyoda-ku, Tokyo

03-3217-2861 03-3217-2862

<http://marunouchi.tamasaka.com/>

Mon - Fri: 11:00 - 15:00 (L.O. 14:00)
Sat / Sun / Holiday: 11:00 - 16:00 (L.O. 15:00)
Mon - Sat: 17:30 - 23:00
(F.L.O. 22:00 / D.L.O. 22:30)
Sun/ Holiday: 17:30 - 22:00
(F.L.O. 21:00 / D.L.O. 21:30)

Facility Holiday

Non-smoking

28 (Counter: 16, Private room: 2)

Lunch: 2,000 - 5,000
Dinner: 6,000 - 12,000

Cash, Credit card, Electronic money
(VISA, Master, Union, JCB, Amex, Diners,
Suica, nanaco, iD, QUIC, Pay, LINE)

Later Payment

For more details

[https://app.wheelog.com/map/
custom/admin/map?spotId=34107](https://app.wheelog.com/map/custom/admin/map?spotId=34107)



Kyoto Tsuruya Kayou Daimaru Tokyo



- Doorway Step Height ≤ 2cm
- Doorway Width ≥ 80cm
- Accessibility available
- Movable chairs
- Restroom on same floor

Tokyo branch of a Japanese restaurant specializing in cuisine from Hanayo, Kyoto and Accessible directly from to Tokyo station

① Exterior

Located on 12F of Daimaru Tokyo

② Doorway

Open entrance with no steps
Entrance width - 110cm

③ Aisle

Safe passage for manual wheelchair
Aisle width - 110cm

④ Interior

Enough turning space for wheelchair

⑤ Table

Movable tables and chairs
Size of chair seat - 44cm

⑥ Table

Table leg in middle
Tabletop - 73.5cm / Under tabletop - 70cm

⑦ Inside

Accessible Elevator

⑧ Restroom

Accessible restroom on the same floor
Manual Sliding door

⑨ Restroom

Handrail: Fixed (L) / Movable (R)

Additional Information Portable electric wheelchair user

Food may not be able to be thickened.
There is a multipurpose toilet on the same floor and handicap parking spaces are available at a partner parking lot in the vicinity.

Specialties *The simplified item name below may differ from the actual name on the menu

Japanese lunch box

Japanese food

Obanzai

Sukiyaki

Accessibility Information

- Straw
- Spoon Fork
- Light plate / cup
- Can be thinly cut
- Minced food
- Thickened food
- Check payable at table
- Accommodates for food allergies
- Wheelchair charging
- Braille menu
- Writing service

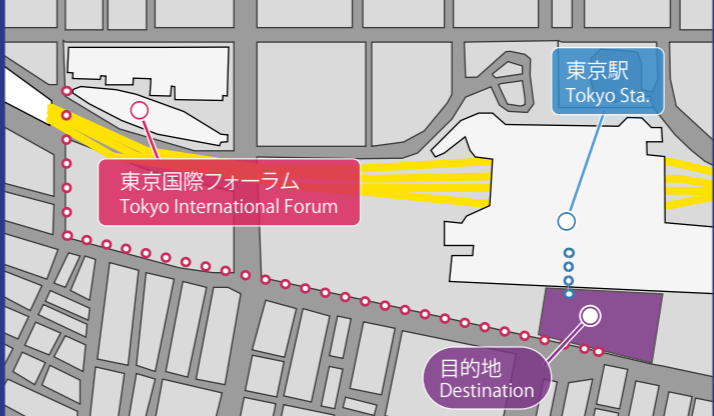
Tourist Information

- Vegetarian food negotiable
- Muslim Accommodates for Muslims
- Wi-Fi Free
- Menu with pictures
- Translation device
- Finger pointing translation sheets
- Multilingual website
- Social media
- Overseas website
- Foreign language menu (English)
- Multilingual staff (English)

Accessible Route Information

Route from closest station
70m from Tokyo Station Yaesu North Gate
① From the Yaesu North Gate, go 70m
② The destination is on 12F in the Department Store

Route from stadium
1.1km from the Tokyo International Forum
① From the site, turn left and go 210m
② Turn left at the 2nd junction, go 800m
③ The destination is on 12F in the Department Store



Store Information

GRANTOKYO NORTH TOWER Daimaru
Tokyo 12F, 1-9-1 Marunouchi, Chiyoda-ku, Tokyo

03-6895-2886 03-6895-2886

http://kyoto-tsuruya.co.jp/shop/tokyo_daimaru.html

11:00 - 23:00 (L.O. 22:00)

Facility Holiday

Non-smoking

40

4,000 - 6,000

Cash, Credit card, Electronic money (VISA, Master, Union, JCB, Amex, Diners, Ali, WeChat)

Later Payment

For more details

<https://app.wheelog.com/map/custom/admin/map?spotId=39161>

obanzai aburi-yaki sake NANA KITTE Marunouchi



Doorway Step
Height ≤ 2cm



Doorway
Width ≥ 80cm



Accessibility
available



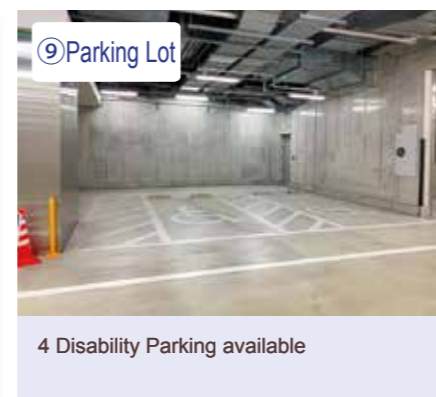
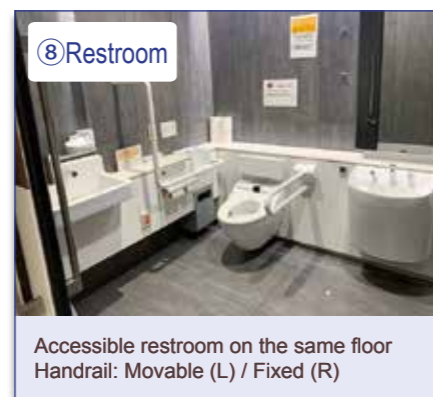
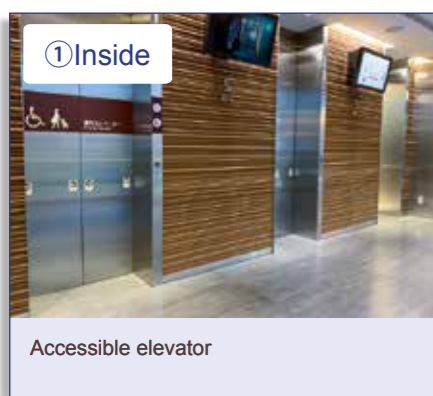
Movable
chairs



Restroom on
same floor



Japanese restaurant serving creative dishes full of fresh Kyoto vegetables, with a view of Tokyo Station



Additional Information

Table seating and floor seating are available but there are two steps to get up to the floor seating.
There are two multipurpose toilets across from the restaurant and two handicap parking spaces on the B2 and B3 levels of the parking lot.

Manual wheelchair user

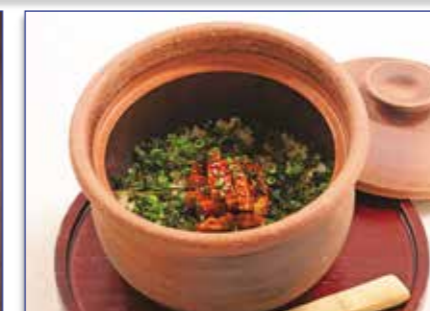
Specialties

*The simplified item name below may differ from the actual name on the menu

Japanese food



Japanese course cuisine



Eel



Chuck Eye Roll

Accessibility Information



Straw



Spoon
Fork



Light
plate / cup



Can be
thinly cut



Minced
food



Thickened
food



Check
payable
at table



Accommodates
for food
allergies



Wheelchair
charging



Braille
menu



Writing
service

Tourist Information



Vegetarian
food
negotiable



Muslim
Accommodates
for Muslims



Wi-Fi
Free



Menu with
pictures



Translation
device



Finger
pointing
translation
sheets



Multilingual
website



Social
media



Overseas
website



Foreign language
menu
(English·Chinese)



Multilingual staff
(English)

Accessible Route Information

Route from closest station

60m from Tokyo Station Marunouchi South Gate

- ① Turn left out of Marunouchi South Gate and cross a crosswalk
- ② The destination is on 5F of Commercial Complex across the crosswalk

Route from stadium

550m from the Tokyo International Forum

- ① From the site, turn right and go 70m
- ② Turn right at the junction, cross 1 crosswalk and go 500m
- ③ The destination is on 5F of Commercial Complex at 3rd junction on the right



Store Information

JP Tower KITTE 5F, 2-7-2 Marunouchi,
Chiyoda-ku, Tokyo

03-6256-0877

[https://byo.co.jp/brand/detail.html?
pdid=0204](https://byo.co.jp/brand/detail.html?pdid=0204)

Mon - Fri: 11:00 - 15:00 (L.O. 14:30)
Sat / Sun / Holiday: 11:00 - 16:00 (L.O. 15:30)
Mon - Sun: 17:00 - 22:30 (L.O. 21:30)

1/1, Facility Holiday

Non-smoking

160 (Table / Tatami: 230, Counter: 30)

Lunch: 1,300 ~
Dinner: 3,800 ~

Cash, Credit card, Electronic money
(VISA, Master, JCB, Amex, Diners,
Suica, WAON, nanaco, Edy, iD, QUIC)

Later Payment

For more details

[https://app.wheelog.com/map/
custom/admin/map?spotId=39335](https://app.wheelog.com/map/custom/admin/map?spotId=39335)



Nanko Resthouse



Doorway Step
Height ≤ 2cm



Doorway
Width ≥ 80cm



Accessibility
available



Movable
chairs



Restroom on
same floor



Japanese food restaurant at the Imperial Palace Gaien

①Exterior



Rest house hidden away inside
Kokyo Gaien Garden

②Doorway



Slopes on both sides of entrance

③Doorway



Gentle slope

④Doorway



Automatic door / No steps
Entrance width - 130cm

⑤Doorway



No steps
Aisle width - 120cm

⑥Aisle



Enough space in hallway for 2 wheelchairs

⑦Table



Movable tables and chairs
Tabletop - 73cm / Under tabletop - 69cm

⑧Table



Baggage space under tabletop /
56cm from the floor

⑨Wheelchair



Rental wheelchair available

Additional Information

A multipurpose toilet is located next to the restaurant.

The parking lot is dedicated to tour buses, but applications to use welfare service vehicles can be made via fax to facility management in advance.

Manual wheelchair user

Specialties

*The simplified item name below may differ from the actual name on the menu

Japanese food



Green tea / Japanese sweets



Ice cream



Japanese lunch box

Accessibility Information



Straw



Spoon
Fork



Light
plate / cup



Can be
thinly cut



Minced
food



Thickened
food



Check
payable
at table



Accommodates
for food
allergies



Wheelchair
charging



Braille
menu



Writing
service

Tourist Information



Vegetarian
food
negotiable



Muslim
Accommodates
for Muslims



Wi-Fi
Free



Menu with
pictures



Translation
device



Finger
pointing
translation
sheets



Multilingual
website



Social
media



Overseas
website



Foreign language
menu
(English)



Multilingual staff

Accessible Route Information

Route from closest station

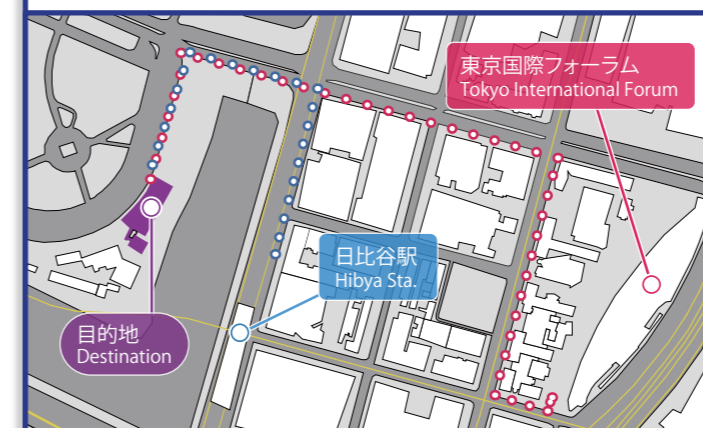
450m from Hibiya Station B3 Exit

- ① Take the elevator at the B3 exit to the first floor
- ② Alight the elevator and go 180m
- ③ Turn left at the junction, cross the crosswalk and go 120m
- ④ Turn left at the junction, go 140m and the destination is on the left

Route from stadium

800m from Tokyo International Forum

- ① From the site, turn right and go 40m
- ② Turn right at the junction, go 240m
- ③ Turn left at the junction, go 350m by crossing 3 crosswalks
- ④ Turn left at the junction, go 140m and the destination is on the left



Store Information

1-1 Kokyogaien, Chiyoda-ku, Tokyo

03-3231-0878 03-3231-0880

<https://fng.or.jp/koukyo/place/rest/nanko-rest/>

8:30 - 11:00, 11:00 - 14:00, 14:00 - 15:00

Open all year round

Non-smoking

300

Lunch: 1,000 - 3,000

Cash, Credit card, Electronic money
(VISA, Master, JCB, Amex, Diners,
Discover, Suica, WAON, Edy)

Later Payment

For more details

<https://app.wheelog.com/map/custom/admin/map?spotId=19615>



A16 TOKYO

Doorway Step
Height ≤ 2cmDoorway
Width ≥ 80cmAccessibility
availableMovable
chairsRestroom on
same floor

Specialties

*The simplified item name below may differ from the actual name on the menu

Western food



Pizza set



Pork meatballs



Coffee

Italian restaurant from San Francisco where one can enjoy kiln-baked pizza



① Exterior

Located on 1F of
Marunouchi BRICK SQUARE

② Doorway

Hinged (pull open) door / No steps
Entrance width - 103cm

③ Interior

No steps



④ Interior

Enough turning space for wheelchair
Aisle width - 80cm

⑤ Terrace

Terrace seating available



⑥ Table

Movable tables and chairs
Size of chair seat - 42cm

⑦ Table

Table leg in middle
Tabletop - 72.5cm / Under tabletop - 70cm

⑧ Restroom

Steps to restroom
1st step 10cm / 2nd step 8.5cm

⑨ Restroom

No accessible restroom
Entrance width - 60cm

Accessibility Information



Straw

Spoon
ForkLight
plate / cupCan be
thinly cutMinced
foodThickened
foodCheck
payable
at tableAccommodates
for food
allergiesWheelchair
chargingBraille
menuWriting
service

Tourist Information

Vegetarian
food
negotiableMuslim
Accommodates
for MuslimsWi-Fi
FreeMenu with
picturesTranslation
deviceFinger
pointing
translation
sheetsMultilingual
websiteSocial
mediaOverseas
websiteForeign language
menu
(English)Multilingual
staff
(English)

Accessible Route Information

Route from closest station

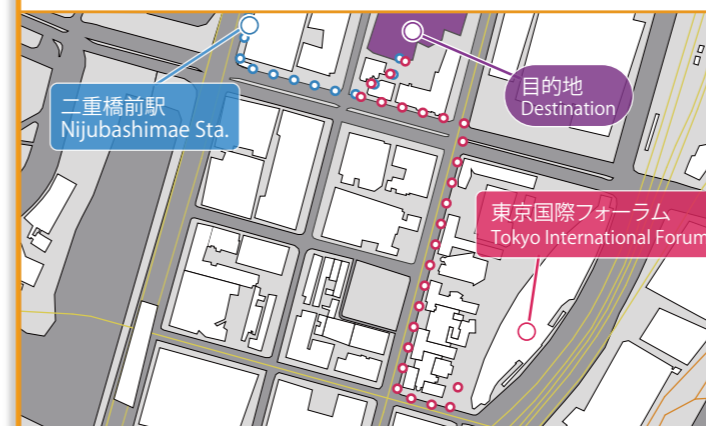
Nijubashimae Station 3 Exit 240m

- ① Take the elevator at 3 exit to the first floor
- ② From the Plaza, turn left and go 110m
- ③ Turn left at the junction and go 120m
- ④ Cross the crosswalk at the junction to the fashion building
- ⑤ The destination is on 1F in the fashion building

Route from stadium

400m from the Tokyo International Forum

- ① From the site and turn right, go 60m
- ② Turn right at the junction, go 250m
- ③ Go 110m by crossing 2 crosswalks at the junctions
- ④ The destination is inside the building



Store Information

🏠 Marunouchi BRICK SQUARE 1F,
2-6-1 Marunouchi, Chiyoda-ku, Tokyo

☎ 03-3212-5215 📠 03-3212-5215

🔗 <https://www.giraud.co.jp/a16/>

🕒 Mon - Sat: 11:00 - 14:00 (L.O. 14:00)
Mon - Sat: 14:00 - 17:00 (L.O. 17:00)
Mon - Thu: 17:00 - 23:00 (L.O. 22:30)
Fri / Sat: 17:00 - 24:00 (L.O. 23:30)
Sun / Holiday: 11:00 - 22:00 (L.O. 21:30)

🚫 No weekly holidays

🚭 Non-smoking

🪑 96 (Table: 70, Terrace: 26)

💰 Lunch: 1,500 - 2,000
Dinner: 4,000 - 5,000

Cash, Credit card, Electronic money
(VISA, Master, JCB, Amex, Diners,
Discover, Suica, iD, QUIC)

Later Payment

Additional Information

Portable electric wheelchair user

There is a multipurpose toilet located on the ground floor of the facility and handicap parking on the B2 level of the same facility.

For more details

[https://app.wheelog.com/map/
custom/admin/map?spotId=34178](https://app.wheelog.com/map/custom/admin/map?spotId=34178)



The Lobby Lounge

The Tokyo Station Hotel



Doorway Step
Height ≤ 2cm



Doorway
Width ≥ 80cm



Accessibility
available



Movable
chairs



Restroom on
same floor



A hotel directly managed by JR with a lounge open throughout the day,
connected directly to JR Tokyo station

① Exterior



Located in THE TOKYO STATION HOTEL

② Doorway



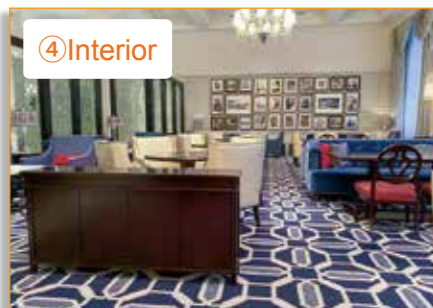
Open entrance with no steps
Entrance width - 100cm

③ Interior



Enough turning space for wheelchair
Aisle width - 100cm

④ Interior



Enough space in hallway for 2 wheelchairs

⑤ Interior



your choice of seating if available

⑥ Table



Table leg in middle
Tabletop - 75cm / Under tabletop - 70cm

⑦ Table



Movable tables and chairs
Size of chair seat - 42cm

⑧ Restroom



Accessible restroom in the hotel
Handrail: Fixed (L) / Movable (R)

⑨ Parking Lot



Disability Parking at the hotel available

Additional Information

The multipurpose toilet and disabled parking is located on the second basement floor of the hotel.

Manual wheelchair user

Specialties

*The simplified item name below may differ from the actual name on the menu

Western food



Morning set plate



Cake

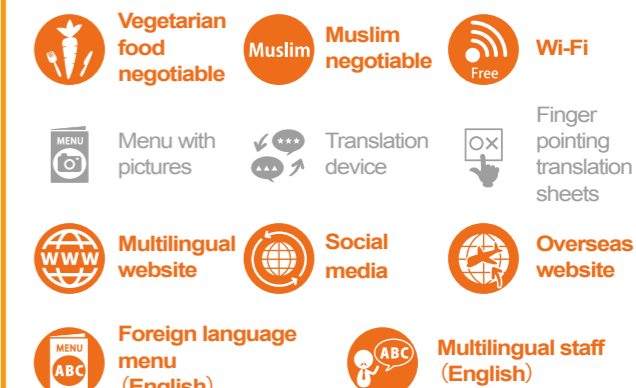


French toast set

Accessibility Information



Tourist Information



Accessible Route Information

Route from closest station

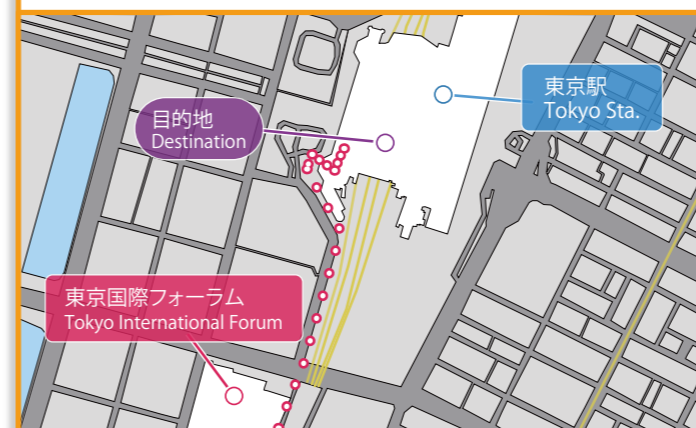
50m from Tokyo Station Marunouchi South Gate

- ① Enter 1F sub-entrance of the Hotel through Marunouchi South Gate at Tokyo Station
- ② The destination is in front of elevator

Route from stadium

700m from the Tokyo International Forum

- ① From the site, turn left and go a little
- ② Cross the crosswalk and turn left, go 260m
- ③ Cross the crosswalk at the junction, go 300m to Tokyo Station
- ④ Enter 1F sub-entrance of the Hotel through Marunouchi South Gate at Tokyo Station
- ⑤ The destination is in front of elevator



Store Information

THE TOKYO STATION HOTEL 1F,
1-9-1 Marunouchi, Chiyoda-ku, Tokyo

03-5220-1260 03-5220-0513

<https://www.tokyostationhotel.jp/restrants/lobbylounge>

8:00 - 22:00 (F.L.O. 21:00 / D.L.O. 21:30)

New Year holidays

Non-smoking

76 (Table: 66, Sofa: 10)

Lunch: 2,000 ~
Dinner: 2,500 ~

Cash, Credit card (VISA, Master, JCB, Amex, Diners, Discover)

Later Payment

For more details

<https://app.wheelog.com/map/custom/admin/map?spotId=17226>



LA MÈRE POULARD TOKYO



- Doorway Step Height ≤ 2cm
- Doorway Width ≥ 80cm
- Accessibility available
- Movable chairs
- Restroom on same floor

French restaurant from Mont Saint Michel popular for its soufflé omelets



① Exterior

Next to Tokyo International Forum



② Doorway

Hinged (pull open) door / No steps
Entrance width - 136cm



③ Interior

Enough turning space for wheelchair



④ Interior

Safe passage for manual wheelchair
Aisle width - 115cm



⑤ Interior

Movable tables and chairs
Size of chair seat - 42cm



⑥ Interior

Cafe section available



⑦ Table

Table leg in middle
Tabletop - 71.5cm / Under tabletop - 67.5cm



⑧ Restroom

Smoking area in the back



⑨ Restroom

No accessible restroom
Entrance width - 47.5cm

Additional Information

Regularly used by those in wheelchairs and accompanied by strollers.

Wheelchairs can be charged in the cloakroom.

A multipurpose toilet is located on B1 of the adjoining building where there are also seven handicap parking spaces on level B3.

Manual wheelchair user

Specialties

*The simplified item name below may differ from the actual name on the menu



Omelette



Chicken dishes



cake

Western food

Accessibility Information

- Straw
- Spoon Fork
- Light plate / cup
- Can be thinly cut
- Minced food
- Thickened food
- Check payable at table
- Accommodates for food allergies
- Wheelchair charging
- Braille menu
- Writing service

Tourist Information

- Vegetarian food negotiable
- Muslim Accommodates for Muslims
- Wi-Fi Free
- Menu with pictures
- Translation device
- Finger pointing translation sheets
- Multilingual website
- Social media
- Overseas website
- Foreign language menu (English)
- Multilingual staff (English-French)

Accessible Route Information

Route from closest station

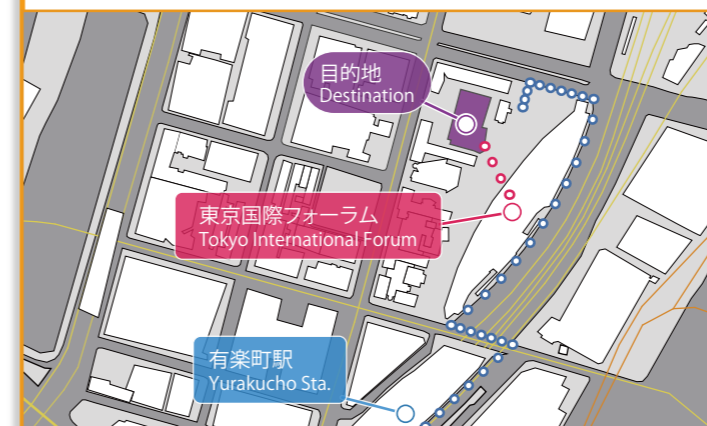
550m from Yurakucho Station Central Exit

- From the central exit, turn left and go 120m
- Cross the crosswalk at the T-shaped junction and go 90m
- Cross the crosswalk, turn right and go 260m
- Turn left at the junction and go 50m
- The destination is on the ground square of the Tokyo International Forum

Route from stadium

10m from the Tokyo International Forum

- The destination is near Hall A in the Plaza



Store Information

Tokyo International Forum Hall A 1F (courtyard side), 3-5-1 Marunouchi, Chiyoda-ku, Tokyo

03-5252-7171 03-5252-7174

<http://www.la-mere-poulard.jp/>

11:30 - 22:00 (L.O. 21:00)

Open all year round

Non-smoking except at designated area

138

Lunch: 2,000
Dinner: 4,000 - 5,000

Cash, Credit card, Electronic money (VISA, Master, Union, JCB, Amex, Diners, Pay, Ali)

Later Payment

For more details

<https://app.wheelog.com/map/custom/admin/map?spotId=27877>



mango tree Tokyo



Doorway Step
Height ≤ 2cm



Doorway
Width ≥ 80cm



Accessibility
available



Movable
chairs



Restroom on
same floor

Thai restaurant with a panoramic view of Tokyo from the 35th floor through floor-to-ceiling windows



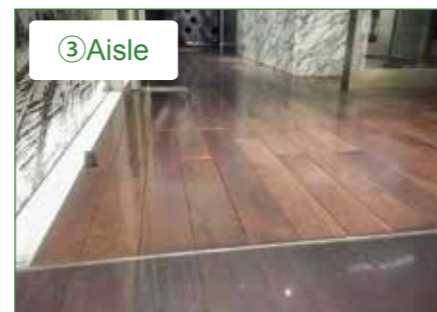
① Exterior

Located on 35F of Marunouchi Bldg.



② Doorway

Open to public during business hours
Entrance width - 125cm



③ Aisle

Enough space in hallway for 2 wheelchairs



④ Interior

Aisle width - 122cm



⑤ Table

Movable tables and chairs
Size of chair seat - 44cm



⑥ Interior

Enough turning space for wheelchair



⑦ Table

Table by the window



⑧ Table

Table leg in middle
Tabletop - 72cm / Under tabletop - 71cm



⑨ Restroom

Accessible restroom on the same floor
Handrail: Fixed (L) / Movable (R)

Additional Information

The elevator to the restaurant on the 35th floor is available from 10:45 AM.
There is a multipurpose toilet on the same floor.
Please contact the restaurant two weeks in advance for English and Thai speaking staff.

Manual wheelchair user

Specialties

*The simplified item name below may differ from the actual name on the menu

International food



Fried fish-paste balls



Fried lobster egg curry stir fry



Sparkling wine

Accessibility Information

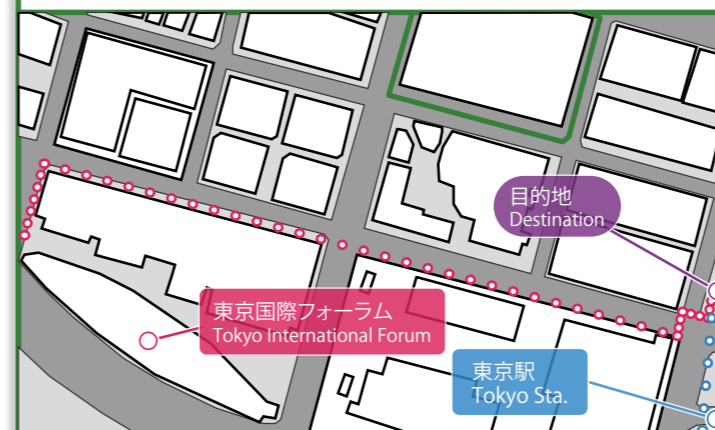
- Straw
- Spoon Fork
- Light plate / cup
- Can be thinly cut
- Minced food
- Thickened food
- Check payable at table
- Accommodates for food allergies
- Wheelchair charging
- Braille menu
- Writing service

Tourist Information

- Vegetarian food negotiable
- Muslim Accommodates for Muslims
- Wi-Fi Free
- Menu with pictures
- Translation device
- Finger pointing translation sheets
- Multilingual website
- Social media
- Overseas website
- Foreign language menu (English)
- Multilingual staff (English・Thai)

Accessible Route Information

- Route from closest station**
150m from Tokyo Station Marunouchi South Gate
① From the Marunouchi South Gate, cross 2 crosswalks on the left
② Cross the crosswalk at the junction and the destination is on 35F in the building on the right
- Route from stadium**
650m from the Tokyo International Forum
① From the site, turn right and go 70m
② Turn right at the junction, go 500m
③ Cross the crosswalk twice at the 2nd junction
④ The destination is on 35F in the building on the left



Store Information

- Marunouchi Bldg. 35F, 2-4-1 Marunouchi, Chiyoda-ku, Tokyo
- 03-5224-5489 03-5224-5525
- <https://mangotree.jp/shop/mangotree/tokyo>
- 11:00 - 15:30 (L.O. 14:30)
17:00 - 23:00 (L.O. 22:00)
- Facility Holiday
- Non-smoking
- 100 (Private room: 12)
- Lunch: 2,000 - 3,000
Dinner: 6,000 - 8,000
- Cash, Credit card, Electronic money (VISA, Master, Union, JCB, Amex, Diners, Discover, Suica, QUIC, Pay, LINE)
- Later Payment

For more details

<https://app.wheelog.com/map/custom/admin/map?spotId=39179>



DEAN & DELUCA CAFES

BMW GROUP TERRACE



Doorway Step
Height ≤ 2cm



Doorway
Width ≥ 80cm



Accessibility
available



Movable
chairs



Restroom on
same floor

Café where one can enjoy food and drink while enjoying the cars on display



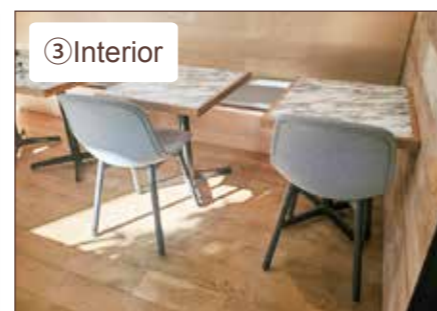
① Doorway Group Japan

Automatic door / No steps
Entrance width - 150cm



② Interior

Safe passage for manual wheelchair
Aisle width - 80cm



③ Interior

Movable tables and chairs
Size of chair seat - 45cm



④ Table

Table leg in middle
Tabletop - 68cm / Under tabletop - 64cm



⑤ Counter

Tall counter



⑥ Table

Tall table



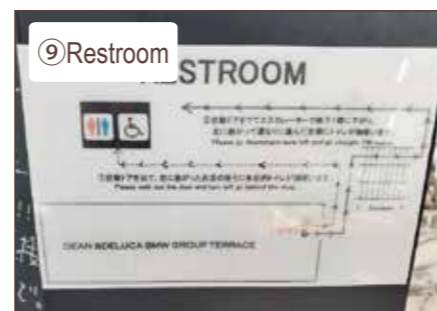
⑦ Interior

Showcase



⑧ Interior

Full selection of goodies for sale



⑨ Restroom

Information board for accessible restrooms

Additional Information

There is a multipurpose toilet located behind the restaurant.
There are also several handicap parking spaces in the B3 parking lot of the building.

Manual wheelchair user

Specialties

*The simplified item name below may differ from the actual name on the menu

Cafe



Avocado Toast



French Toast



Green Tea Latte

Accessibility Information



Straw



Spoon
Fork



Light
plate / cup



Can be
thinly cut



Minced
food



Thickened
food



Check
payable
at table



Accommodates
for food
allergies



Wheelchair
charging



Braille
menu



Writing
service

Tourist Information



Vegetarian
food
negotiable



Muslim
Accommodates
for Muslims



Wi-Fi
Free



Menu with
pictures



Translation
device



Finger
pointing
translation
sheets



Multilingual
website



Social
media



Overseas
website



Foreign language
menu
(English)



Multilingual staff
(English)

Accessible Route Information

Route from closest station

160m from Tokyo Station Yaesu North Gate

- ① From the Yaesu North Gate, go 40m
- ② Turn right out of the station and go 120m
- ③ The destination is in the Showroom on 1F of high-rise building

Route from stadium

650m from the Tokyo International Forum

- ① From the site, turn left and go 210m
- ② Turn left at 2nd junction, cross the crosswalk and go 400m
- ③ The destination is in the Showroom on 1F of high-rise building on the left



Store Information

Gran Tokyo South Tower 1F BMW
Showroom, 1-9-2 Marunouchi,
Chiyoda-ku, Tokyo

03-5218-5775

<https://www.deandeluca.co.jp/>

Mon - Fri: 7:30 - 21:00
Sat / Sun / Holiday: 8:00 - 20:00

Facility Holiday

Non-smoking

40

500 - 2,000

Cash, Credit card, Electronic money
(VISA, Master, Union, JCB, Amex, Diners,
Discover, Suica, WAON, nanaco, Edy,
iD, QUIC, Pay, LINE, Ali, WeChat)

Advance Payment

For more details

<https://app.wheelog.com/map/customer/admin/map?spotId=34385>

