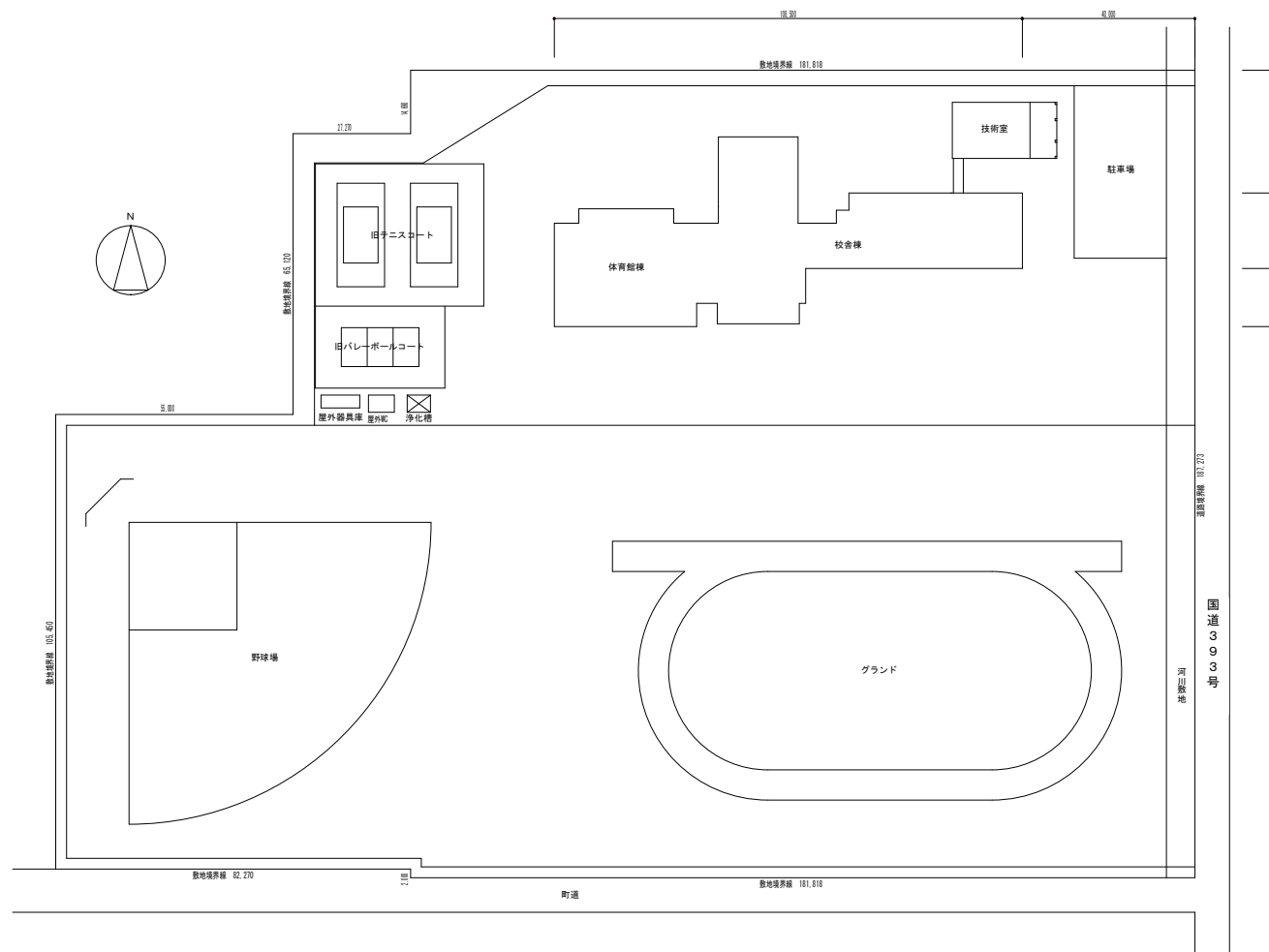
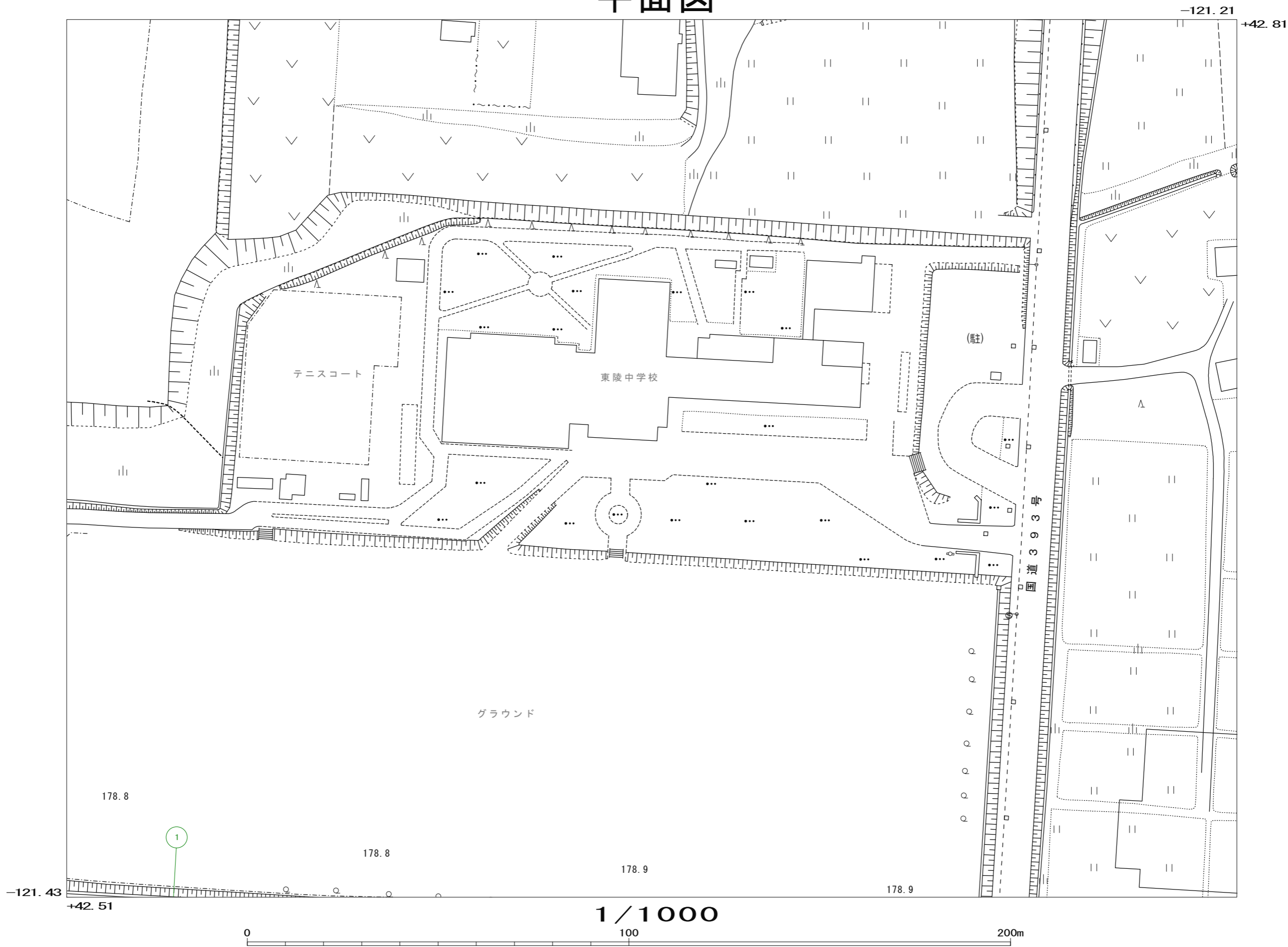


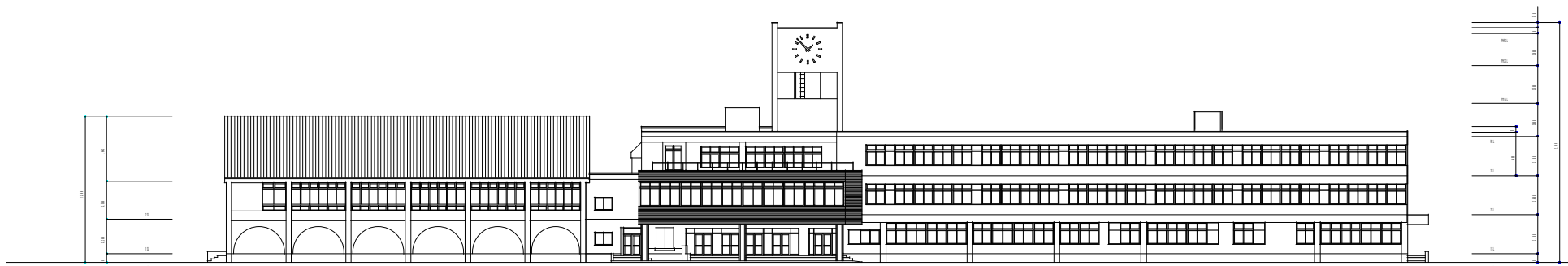
施設名称	俱知安町立東康中学校
地名地番	俱知安町北6条東9丁目2番地
建物概要	
校舎棟	鉄筋コンクリート造一部鉄骨造 3階 PH2階建て
屋体棟	鉄骨造 2階建て



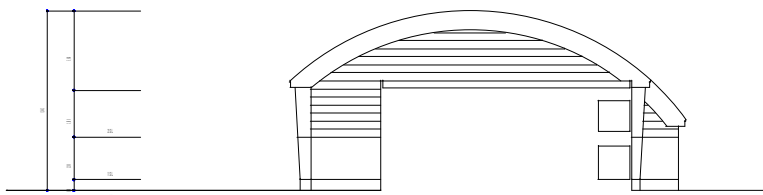
配置図 S=1:600

平面図

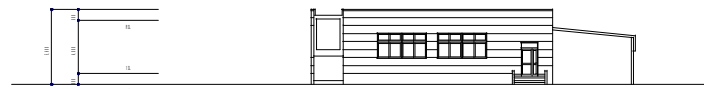




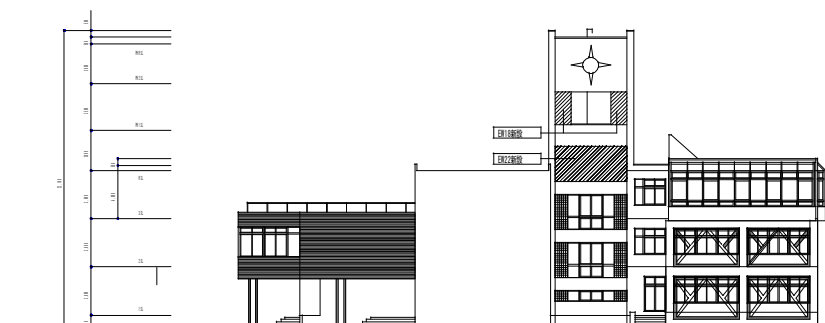
南立面图



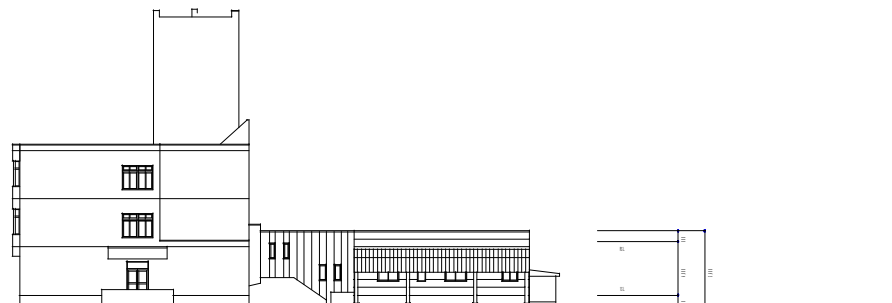
东立面图



西北立面图

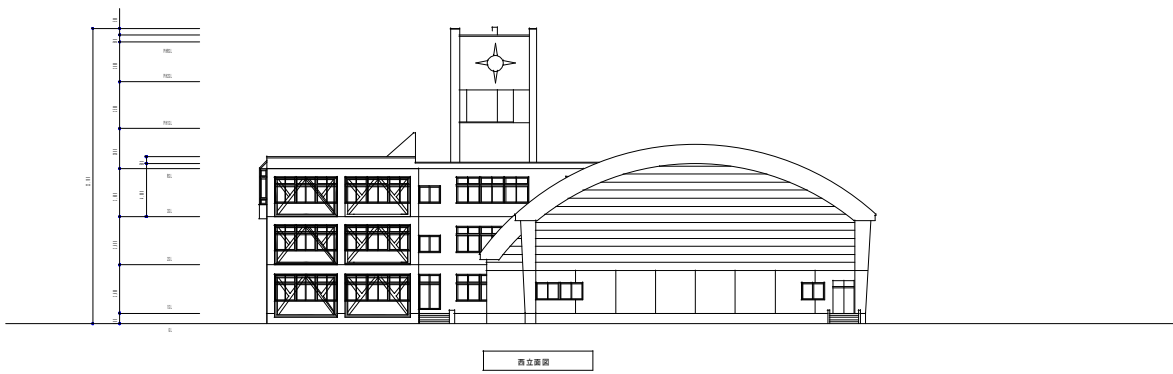
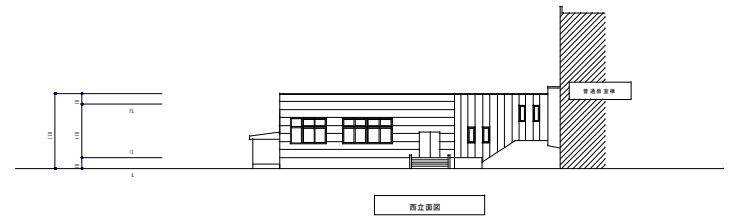
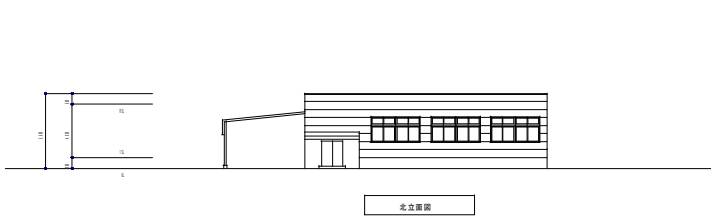
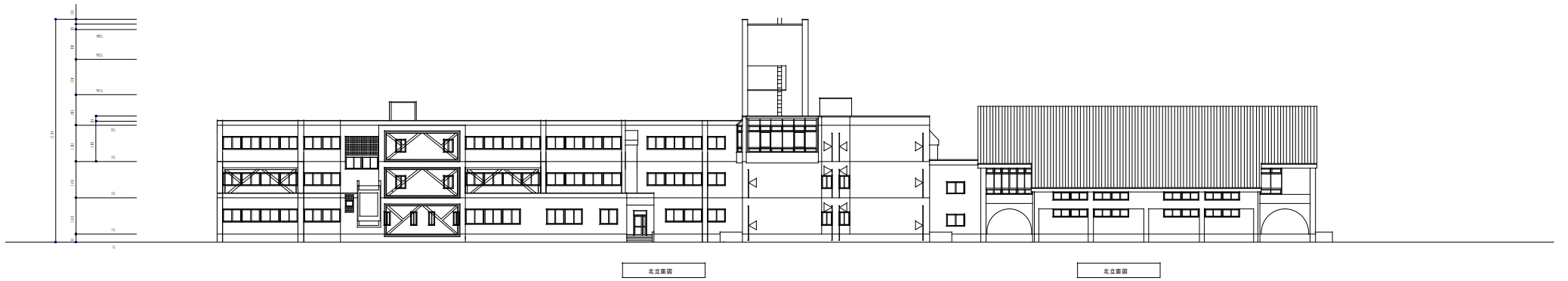


东立面图

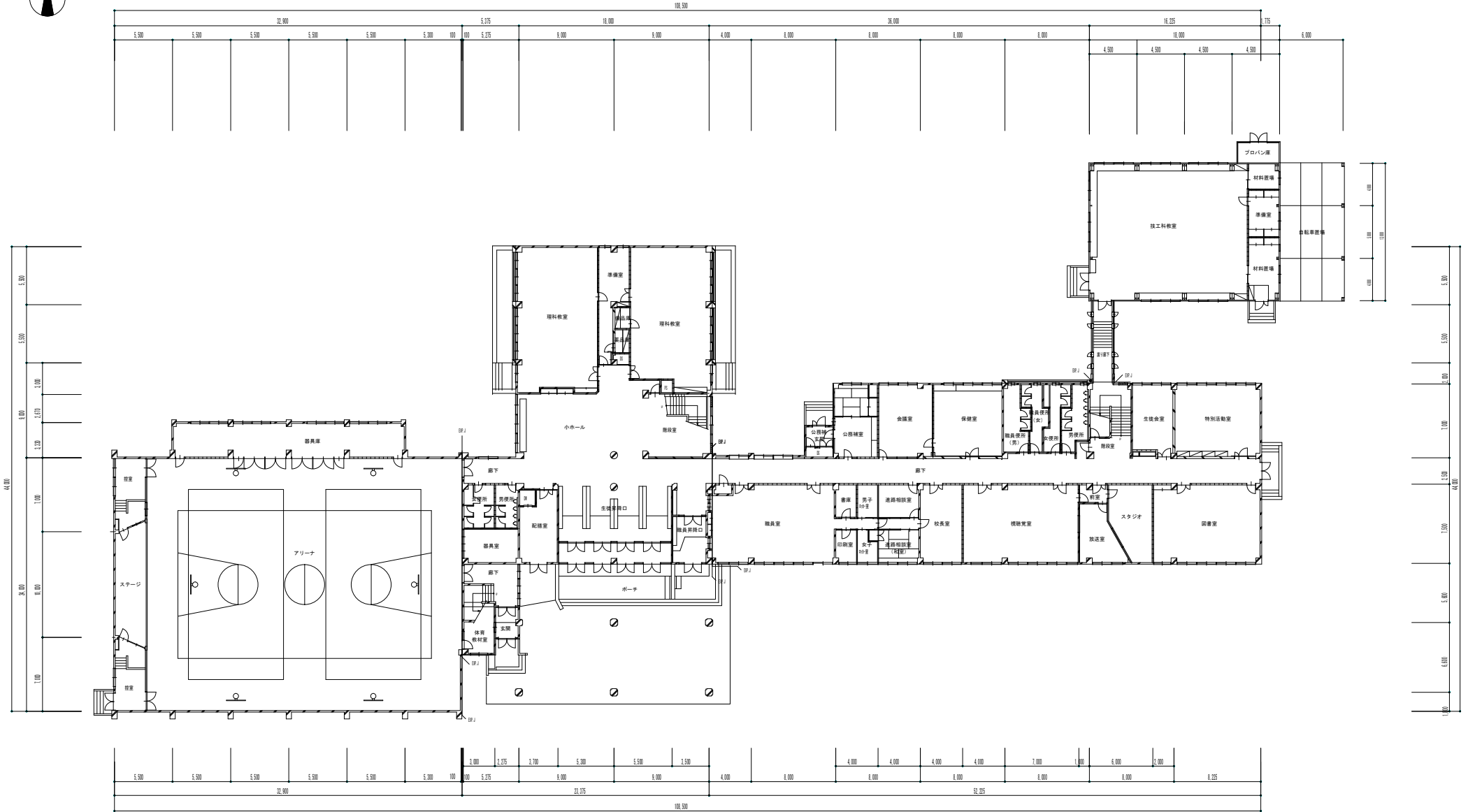


西立面图

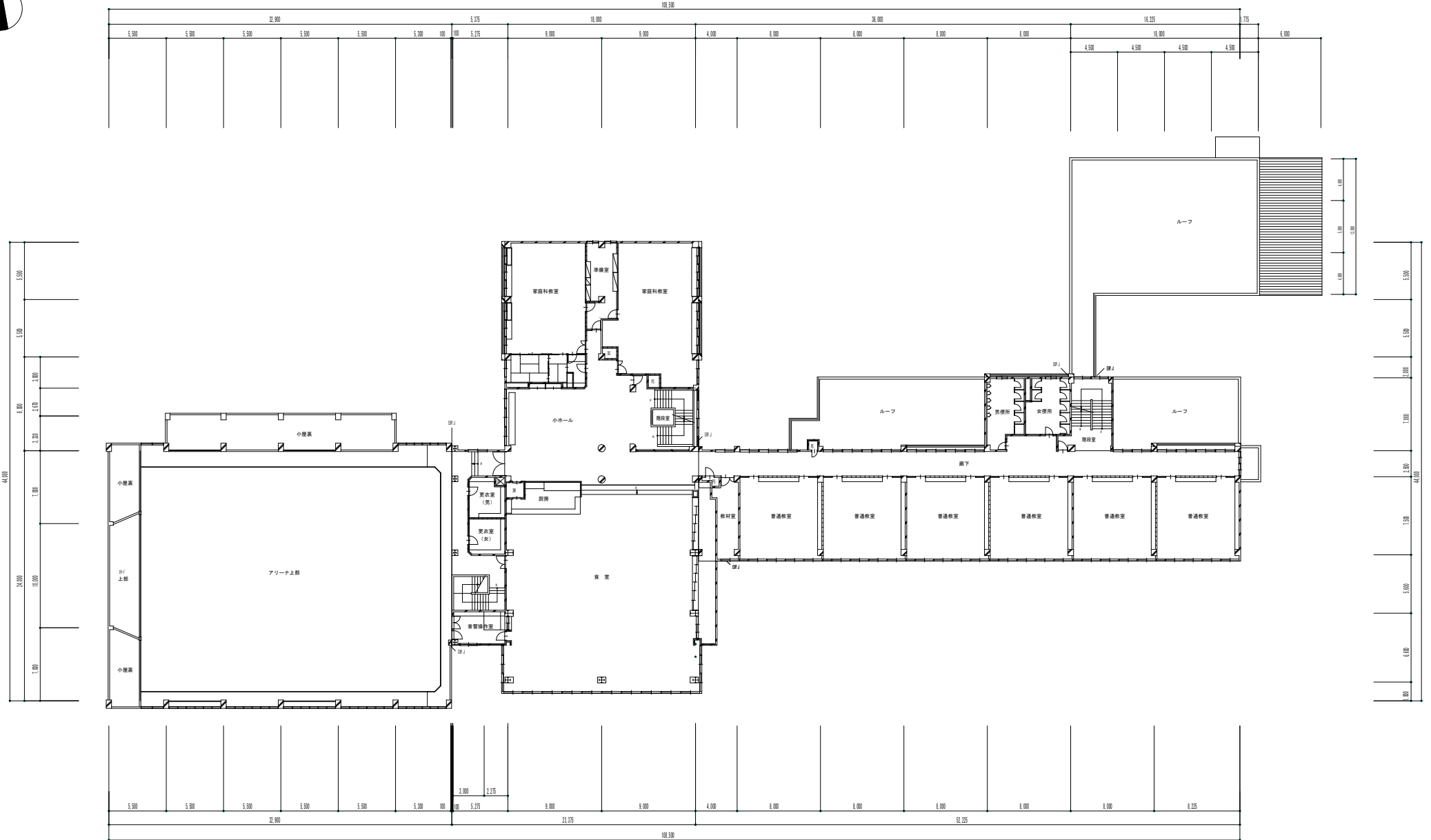
旧东陵中学校立面图



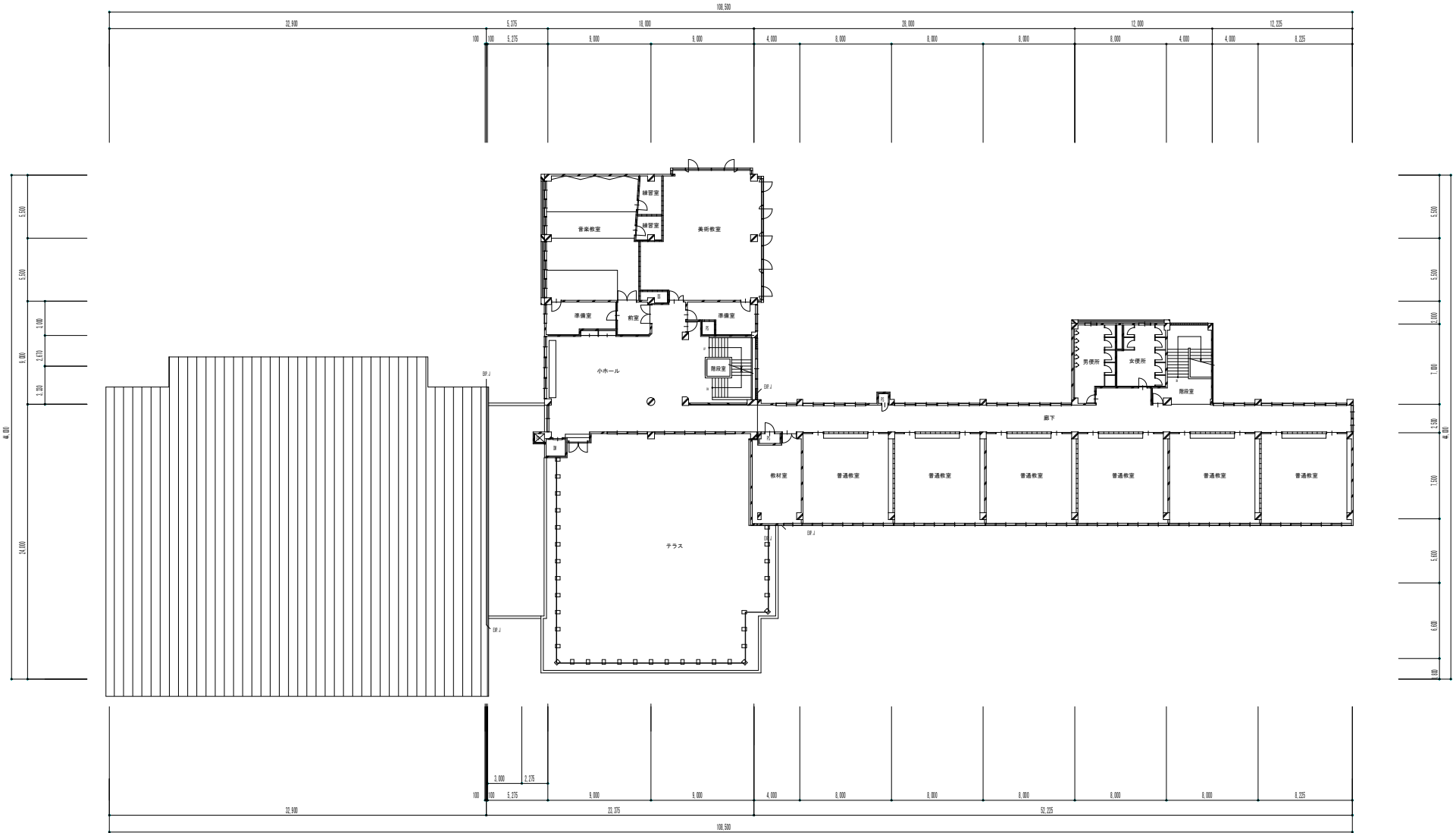
旧东城中学校立面图



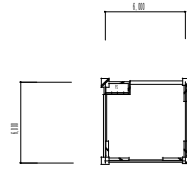
旧東陵中学校 1階 平面図



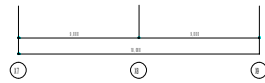
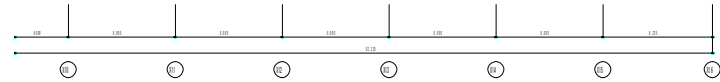
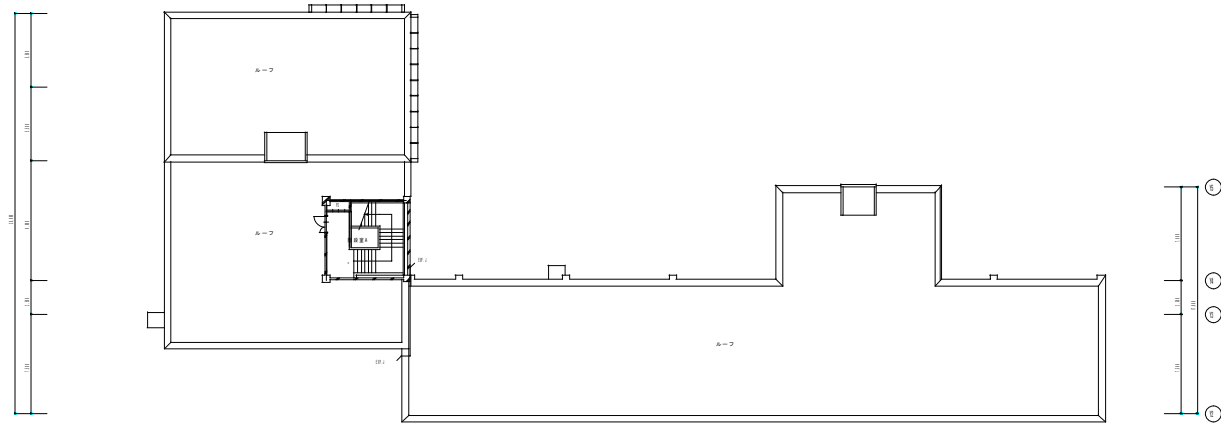
旧東稜中学校 2階 平面図



旧東陵中学校 3階 平面図



PH1階 平面図



R階 平面図