

マリ・クリスティーヌ氏 提出資料



1



2



3



4



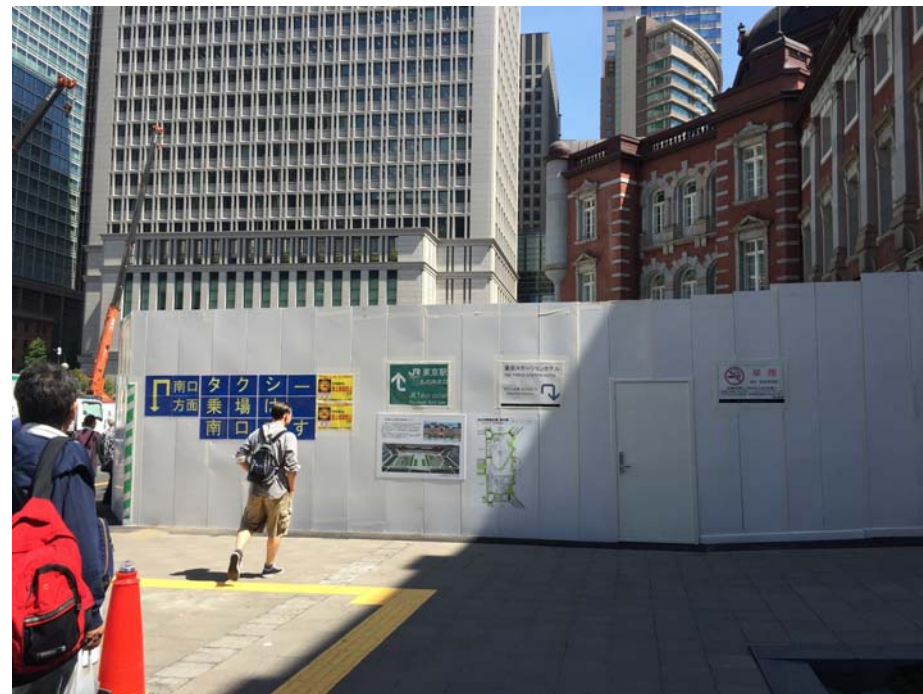
5



6



7



8



9



10



11



12



17



18



19



20



21



22



23



24



25



26



27



28



29



30



31



32



33



34



35



36



37



38



39



40



41



42



43



44



45



46



47



48



49



50



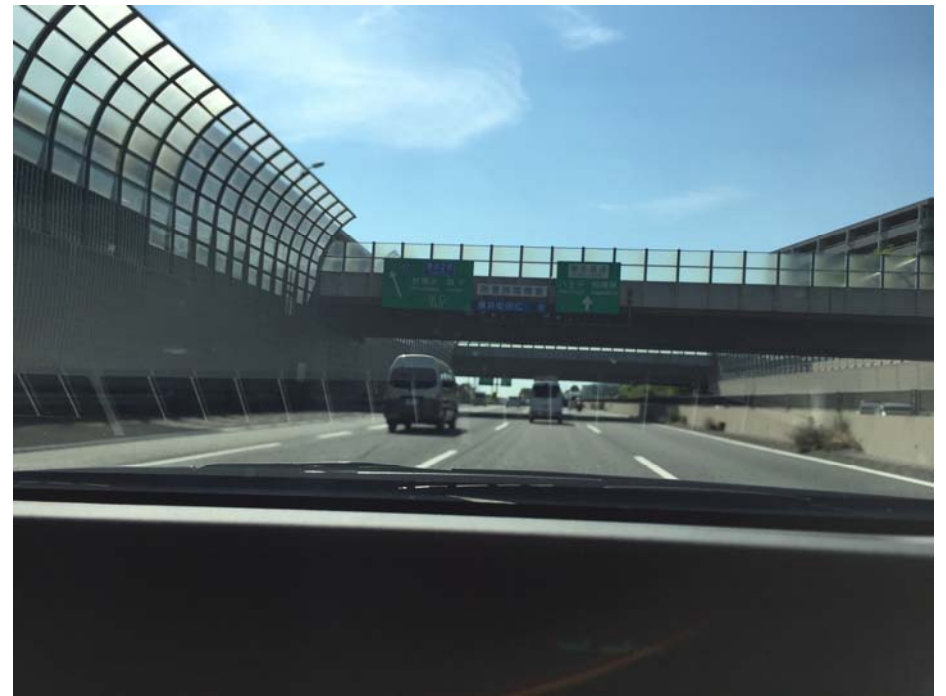
51



52



53



54



55



56



57



58



59



60



61



62



63



64



65



66



67



68



69



70



71



72



73



74



75



76



77



78



79



80



81



82



83



84



85



86

NARITA AIRPORT by AQUALINE

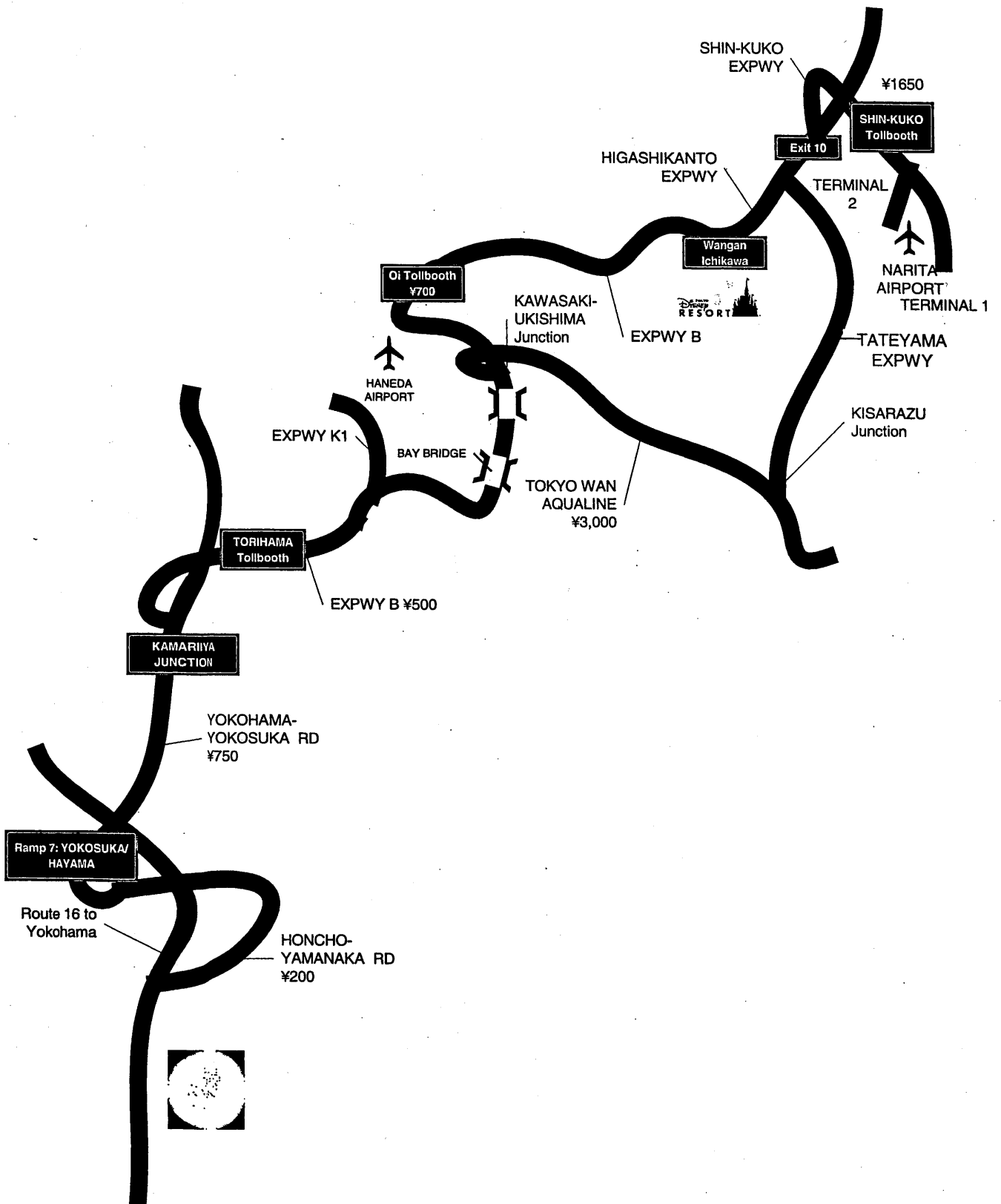
From YOKOSUKA:

1. Take <u>HONCHO-YAMANAKA Rd.</u> -Go left at the fork after tollgate following the green sign for <u>YOKOHAMA-YOKOSUKA (YOKO-YOKO) Toll Rd.</u>	¥200
2. Take YOKO-YOKO Rd. toward YOKOHAMA -Stay in left lane after ASAHINA (#5).	take ticket (Ikego start from here)
3. Follow the signs for <u>NAMIKI/HANEDA AIRPORT/SHUTO EXPWY B</u>	
4. Pay toll at KAMARIYA tollgate and follow signs for SHUTO EXPWY B	¥750
5. Take <u>SHUTO EXPWY B</u> and pay toll at TORIHAMA tollgate -Stay on SHUTO EXPWY B, go over the BAY BRIDGE	¥500
6. Follow the signs for <u>TOKYO WAN AQUALINE</u>	
7. Pay toll at KISARAZU-KANEDA tollgate	¥3,000
8. Take <u>TATEYAMA EXPWY</u> toward NARITA -TATEYAMA EXPWY will run into HIGASHI-KANTO Expressway	
9. Take <u>HIGASHI-KANTO EXPWY</u> toward NARITA AIRPORT	
10. Exit off HIGASHI-KANTO EXPWY at #10 -You are now on <u>SHIN-KUKO EXPWY</u> and pay the final toll	¥2,500
Total toll	¥6,950 (Ikego ¥6,650)

RETURN:

To YOKOSUKA:

1. Take <u>SHIN-KUKO EXPWY</u> from the airport -This will run into HIGASHI-KANTO EXPWY	take ticket
2. Take <u>HIGASHI-KANTO EXPWY</u> -Follow the signs for TOKYO WAN AQUALINE	
3. Take <u>TATEYAMA EXPWY</u> -Pay toll at KISARAZU tollbooth	¥5,500
4. Take <u>TOKYO WAN AQUALINE</u> -Pay toll at KAWASAKI-UKISHIKA	¥500
5. Take <u>SHUTO EXPWY B</u> toward YOKOHAMA -Go over the BAY BRIDGE, follow the signs for <u>YOKOHAMA-YOKOSUKA (YOKO-YOKO) Rd.</u>	
6. Take YOKO-YOKO Rd. -Go toward YOKOSUKA, MIURA direction	take ticket
7. Exit off #7 to YOKOSUKA, pay final toll - #6 to IKEGO	¥750 (¥650)
8. Take HONCHO-YAMANAKA Rd. to YOKOSUKA	¥200
Total toll	¥6,950 (Ikego ¥6,650)



NEW SANNO HOTEL DRIVING

(Local address)

THE NEW SANNO
U.S. Forces Center
4-12-20 Minami-Azabu
Tokyo JAPAN

(Military address)

U.S. Naval Joint Services Activity
THE NEW SANNO
APO AP 96337-0110

(Phone Numbers)

DSN: 229-8111 (operator)
DSN: 229-7121 (reservations)
Commercial: (03) 3440-7871
FAX: 229-7102 (DSN)

FROM YOKOSUKA:

1. Turn right at the main gate onto Rt. 16. After passing Daiei Mall, enter on to "HONCHO-YAMANAKA" Toll Road. Pay □200 at tollgate and go left at the fork follow the sign for "YOKOHAMA-YOKOSUKA (YOKO-YOKO)" Toll Road.
2. Take YOKO-YOKO Toll Road towards "YOKOHAMA". After the #5 exit "ASAHINA", get in the left lane and follow the signs for "NAMIKI/HANEDA AIRPORT/SHUTO EXPWY B".
3. When you get to the "KAMARIYA" tollgate pay a ¥750 (¥650 from Zushi), and then follow the signs for "HANEDA AIRPORT/SHUTO EXPWY B".
4. At the "TORIHAMA" tollgate pay a ¥500 and follow SHUTO EXPWY "B".
5. You will then go over the YOKOHAMA BAY BRIDGE and then pass the HANEDA AIRPORT, which will be on your right.
6. At the "OI" tollgate pay a □700.
7. Take the SHUTO EXPWY "11" at the "ARIAKE" Junction, then go over the "RAINBOW BRIDGE" until you get to SHUTO EXPWY "C-1". From "C-1", change to SHUTO EXPWAY "2".
8. After getting on SHUTO EXPWY "2", pay close attention to the sign for "TENGENJI".
9. **Exit off at "TENGENJI"**.
10. As you exit off the Expressway, you will see a large brown building on your right side, this is the **NEW SANNO HOTEL**.
11. Stay in the right hand lane and make a U-turn at the next light. The main entrance is on your left.

FROM IKEGO:

Make a left at Rt. 24 (7-11 on your right). Get on to YOKO-YOKO Toll Road from ZUSHI (#6). Take a toll ticket and head towards Yokohama. **Continue with #2 above.**

ATSUGI & ZAMA BY DRIVING

TO ATSUGI (Naval Air Facility)

From Yokosuka or Ikego:

Go to **YOKOHAMA-YOKOSUKA (YOKO-YOKO) Toll Road** toward YOKOHAMA. Pay ¥900 (¥800 from Zushi) at the tollgate then take the **HODOGAYA BYPASS** toward **HACHIOJI (Rt. 16)**. You can either take the **SHIMOKAWAI EXIT** and go to the back gate or take Rt. 246 to go to the front gate.

SHIMOKAWAI EXIT - Go left at the intersection on Rt. 45. Proceed straight until you see a blue sign (7th light including the light at Shimokawai). Use the right lane to turn right towards Yamato. This road Rt. 40 will take you to the back gate (East Gate) of Atsugi base. The back gate (East Gate) is open 24 hours.

RT. 16 & RT. 246 - Follow Hodogaya Bypass that connects to Rt. 16. You will pass through a trestle bridge and over the entrance/exit of Tomei Expressway until you see a blue sign. Stay in the left lane and turn left onto Rt. 246. On Rt. 246, you will pass through a tunnel. Count the traffic light after the tunnel by Red Lobster as 1. At the 3rd light, (where you see a pachinko parlor with a large parking lot on your right) turn left. Go straight until you cross a railroad track and come to a "T". Turn right at the "T", and at the next intersection (Sagamino Pachinko with big Gorilla), turn left. After about 1km, there is a stoplight at a "Y" intersection. Stay to the left, and this road will take you to the front gate.

TO CAMP ZAMA (Army Base)

From Yokosuka or Ikego:

Go to the **YOKO-YOKO Toll Road** toward YOKOHAMA. Pay ¥900 (¥800 from Zushi) at the tollgate then take the **HODOGAYA BYPASS** toward **HACHIOJI (Rt. 16)**.

RT. 16 & RT. 51 - Stay on Rt. 16 (passing Shimokawai Exit, entrance to Tomei Expressway and intersection of Rt. 246). Take a left onto Rt. 51 and follow this road all the way to Camp Zama. (There will be numerous traffic lights). You are almost there when you pass under an off-ramp and on your left is an orange colored statue in front of a large fire station. You will enter Camp Zama at the gate on your right. You passed Camp Zama if you go through a short tunnel.

RT. 16 & RT. 246 - Proceed on Rt. 16. Turn left onto Rt. 246. Follow Rt. 246 and make a right on Rt. 42. **Stay right** when you approach the "Y" where the Stork Gas station is located. You will pass a school, then 2 huge brown buildings (Zama City Hall) and another school (junior high), all on your right but located in different blocks. Turn left immediately at the intersection adjacent to the Junior High School. This narrow road will connect to Rt. 51 where you will take a left (bottom of hill) and you will enter Camp Zama on your right.

SHIMOKAWAI EXIT - If traffic has built up on Hodogaya Bypass, exit on Shimokawai and proceed as you would to go to the back gate of NAF Atsugi. Enter there and exit through the main gate. Follow the road to the "T" (Sagamino Pachinko) and turn left. Proceed to the next major intersection (traffic light) and turn right. Follow the road until you come to another "T", Rt. 42. Turn right and follow the directions for above Rt. 16 & Rt. 246, starting from "**Stay right.**"

Please refer to the map on the back.