

NARITA TRANSIT PROGRAM



Welcome to Japan!

If you have a layover at Narita Airport, there are tour plans available that let you experience some of our country's history and culture, as well as shopping. Why not take this opportunity to enjoy a bit of Japan?

Two plan options are available.

Plan 1 Volunteer Guide Tours

All tours are run by local guides who get you safely to and from the airport and who help ensure that you are able to experience the warmth and hospitality of Japan.

Total Time

- 3

hrs.

Narita-san Shinsho-ji Temple Japanese Culture Experience


- 3

hrs.

Discovery of aeronautical science history and air craft pilot experience


- 3

hrs.

Japanese Country Life Experience



Plan 2 Self Tours


All tours are self-guided, allowing you more time to shop as well as providing special offers and discounts.

Total Time

- 2.5

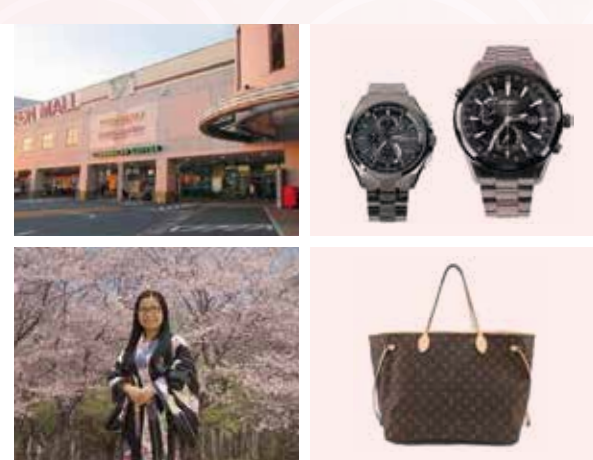
hrs.

Shisui Premium Outlets® Shopping Bus Tour


- 3

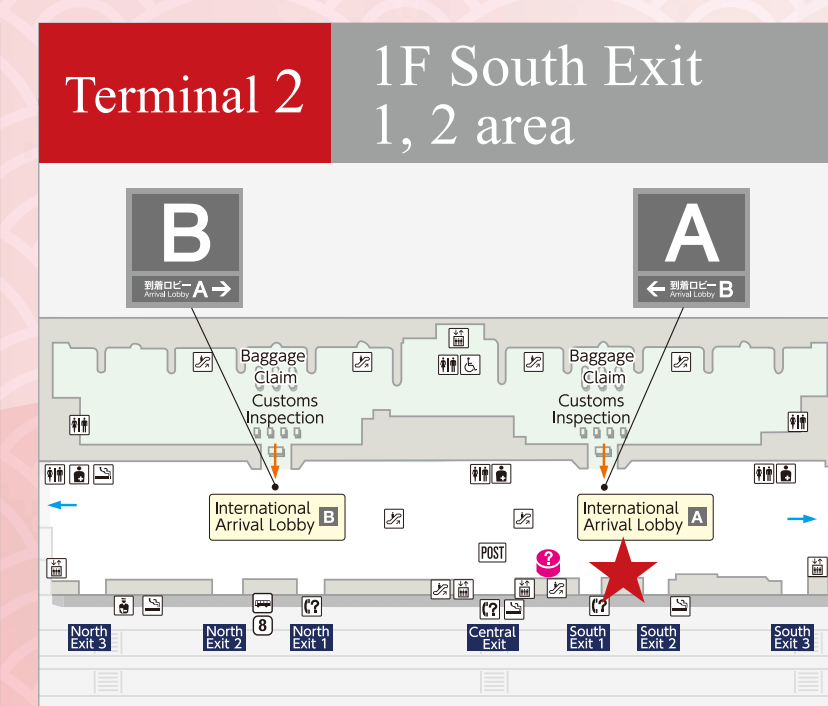
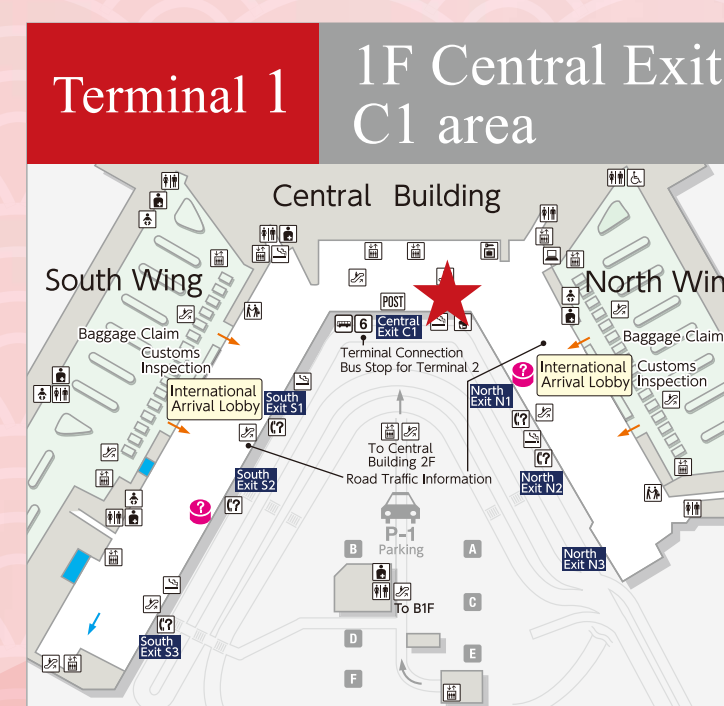
hrs.

AEON Mall Narita Shopping & Wonderful "WA" Experience
Yukata dress-up experience (fees apply)



For more details, please visit the **Narita Transit Program counter** in Narita Airport.

Tour arrangements can also be made in person after arrival at the Transit Tour Desk at Narita Airport. Why not turn those layover hours into fun memories of Japan?



Narita International Airport Information ☎ **0476-34-8000** (If calling from outside Japan ☎ **+81-476-34-8000**)

Important Notes

(1) This program is for those who have spare time for layover. (2) Tour participants must be eligible to enter Japan. (3) Please ensure that you have sufficient layover time to participate in your desired tour, as tour participants are solely responsible for their schedule and any possible delays which may arise. (4) All tours are intended to guide non-Japanese travelers who are changing planes at Narita Airport, to the surrounding area at Narita Airport. It does not matter whether the connecting flight is a domestic or international flight. (5) All tours are free of charge; however, participants are responsible for all personal expenses, including transportation costs and entry fees, while on the tour. (No need to cover guides fees or expenses.) (6) Due to the limited number of volunteer guides available, there is no guarantee that a guided tour can be provided to all participants desiring one.