

平成23年3月の建設工事受注動態統計調査(大手50社調査)結果

民間工事は、製造業等が増加したが、不動産業、電気・ガス・熱供給・水道業等が減少したため、対前年同月比1.4%減少し、2ヶ月ぶりに減少した。  
総計は、前年同月比11.0%減少し、2ヶ月ぶりに減少した。

1. 受注総額

3月の受注総額は2兆85億円

対前年同月比は、11.0%減であり、2ヶ月ぶりの減少。

国内は、公共工事、民間工事ともに減少した。国内計は1兆9,124億円(対前年同月比8.2%減, 2ヶ月ぶりの減少)。

2. 民間

3月の民間工事は1兆4,615億円(対前年同月比1.4%減, 2ヶ月ぶりの減少)

・製造業(同16.6%増)、非製造業(同3.8%減)

・発注者別では、製造業、金融・保険業、情報通信業等が増加し、不動産業、電気・ガス・熱供給・水道業等が減少した。

・工事種類別では、建築、土木ともに減少した。医療・福祉施設、住宅等が増加し、事務所・庁舎、店舗、教育・研究・文化施設等が減少した。

3. 公共

3月の公共工事は3,938億円(対前年同月比28.2%減, 3ヶ月連続の減少)

国の機関、地方の機関ともに減少した。

・国の機関(同33.1%減, 3ヶ月連続の減少)、地方の機関(同16.6%増, 3ヶ月ぶりの減少)

・発注者別では、国の機関は、独立行政法人が増加し、それ以外が減少した。

地方の機関は、全ての機関が減少した。

・工事種類別では、建築、土木ともに減少した。工場・発電所、治山・治水等が増加し、道路、港湾・空港、教育・研究・文化施設等が減少した。

4. 海外

3月の海外工事は961億円(2ヶ月ぶりの減少)

- 
- 平成20年4月より日本標準産業分類が改訂されたため、民間の発注者分類の名称を変更しました。  
・鉱業、建設業、採石業、砂利採取業、建設業、運輸業、運輸業、郵便業  
・卸売・小売業、卸売業、小売業、金融・保険業、金融業、保険業
  - 海外工事の受注額には、現地法人分は含まない。
  - 施工都道府県別受注高を、平成22年12月分からP.3に追加しました。  
(施工ブロック別受注高、施工都道府県別受注高は、国内計からその他(駐留軍・外国公館と小口工事)を除いたものです。)

# 建設工事受注動態統計調査（大手50社調査） 時系列表

（上段：実額 百万円 下段：前年同期比 %）

		総計	国内計	民間等			公共機関			その他	海外	建築	土木	施工高	未消化 工事高	手持ち 工事数
				小計	製造業	非製造業	小計	国の機関	地方の機関							
年 度	平成 20 年度	12,376,651 12.3	11,638,393 11.4	8,460,300 19.0	1,927,031 15.8	6,533,269 19.9	2,597,652 23.5	1,814,434 16.0	783,218 45.5	580,441 0.2	738,258 24.8	8,423,271 18.4	3,953,380 4.1	13,906,012 3.3	12,116,362 10.2	
	平成 21 年度	10,616,196 14.2	10,051,231 13.6	7,167,601 15.3	1,192,150 38.1	5,975,451 8.5	2,308,238 11.1	1,533,553 15.5	774,685 1.1	575,392 0.9	564,966 23.5	7,264,382 13.8	3,351,814 15.2	12,137,493 12.7	11,378,797 6.1	
	平成 22 年度	10,068,475 5.2	9,554,775 4.9	6,980,213 2.6	1,213,889 1.8	5,766,324 3.5	2,028,050 12.1	1,246,512 18.7	781,538 0.9	546,512 5.0	513,701 9.1	7,119,461 2.0	2,949,014 12.0	- -	- -	
四 半 期	22 年 1- 3月	3,657,554 18.7	3,458,490 14.6	2,411,585 29.9	305,927 13.8	2,105,658 40.3	906,006 10.5	646,924 15.9	259,082 6.6	140,898 6.0	199,064 210.0	2,514,072 34.6	1,143,481 5.8	3,074,608 19.5	11,378,797 6.1	
	4- 6	1,699,699 9.9	1,611,858 8.5	1,179,965 8.0	218,725 18.8	961,240 5.1	299,690 13.3	140,757 36.9	158,933 29.5	132,204 1.7	87,840 29.6	1,164,449 8.0	535,249 13.9	2,345,427 27.0	10,792,234 2.0	
	7- 9	2,614,158 8.0	2,486,885 8.8	1,837,465 9.4	362,503 1.5	1,474,962 11.2	504,846 6.2	311,391 9.6	193,455 0.1	144,574 9.9	127,273 11.7	1,873,713 7.6	740,445 8.9	2,638,585 6.4	10,922,241 2.8	
	10-12	2,275,219 2.0	2,143,417 1.9	1,514,519 4.8	238,333 4.2	1,276,186 6.7	499,565 3.6	308,275 3.3	191,291 4.0	129,333 7.3	131,802 3.6	1,553,474 6.7	721,745 6.7	2,552,653 15.8	10,761,319 3.5	
	23 年 1- 3月	3,479,400 4.9	3,312,615 4.2	2,448,265 1.5	394,328 28.9	2,053,937 2.5	723,949 20.1	486,090 24.9	237,859 8.2	140,401 0.4	166,785 16.2	2,527,825 0.5	951,575 16.8	- -	- -	
次 月	22 年 3月	2,257,368 42.3	2,083,498 34.4	1,482,203 75.3	175,203 12.1	1,306,999 89.6	548,131 14.3	384,336 17.9	163,795 4.3	53,164 18.5	173,871 379.9	1,596,082 74.2	661,286 1.3	1,444,978 18.5	11,378,797 6.1	11.2
	4	421,960 25.0	400,811 27.3	288,454 31.3	69,348 25.6	219,106 33.0	69,379 18.9	40,064 32.8	29,315 12.8	42,978 5.3	21,149 81.2	254,917 29.6	167,044 16.8	716,809 41.6	11,231,803 2.6	11.6
	5	496,614 9.2	454,063 4.1	343,672 10.2	63,612 18.8	280,061 19.8	70,437 13.5	23,786 52.1	46,651 6.5	39,954 6.8	42,551 130.4	360,935 33.5	135,679 26.5	684,101 20.6	10,978,643 2.0	11.5
	6	781,124 10.2	756,984 2.3	547,839 0.4	85,765 12.4	462,074 2.2	159,874 10.6	76,906 32.5	82,967 27.9	49,272 6.5	24,140 74.5	548,597 13.4	232,527 1.7	944,517 15.9	10,792,234 2.0	11.5
	7	656,030 0.7	609,649 5.4	461,928 2.9	112,755 20.0	349,173 13.4	103,071 33.5	62,113 27.8	40,958 40.5	44,650 9.8	46,381 181.4	437,807 2.6	218,223 3.3	694,531 8.2	10,733,277 4.1	11.5
	8	694,184 0.0	686,438 5.9	496,578 4.7	89,494 20.9	407,084 12.8	141,025 9.7	89,067 7.5	51,958 13.8	48,834 7.2	7,746 83.2	485,802 3.1	208,381 6.5	805,621 9.8	10,732,564 1.8	11.6
	9	1,263,945 15.0	1,190,798 17.0	878,958 20.5	160,254 40.5	718,705 27.6	260,749 2.3	160,211 8.8	100,539 27.0	51,091 31.2	73,147 42.8	950,104 14.2	313,841 17.1	1,138,433 2.6	10,922,241 2.8	11.8
	10	586,721 5.6	556,376 7.4	413,112 8.9	41,540 31.9	371,572 16.7	102,128 44.1	65,292 40.4	36,836 49.7	41,136 6.3	30,345 45.7	387,299 7.4	199,422 23.6	676,234 10.3	10,866,817 2.3	11.8
	11	671,358 5.3	661,881 1.1	440,934 2.4	68,772 6.2	372,162 3.9	177,693 10.4	95,113 11.2	82,580 53.3	43,254 22.8	9,477 76.2	462,177 0.4	209,181 15.7	829,251 3.1	10,781,925 1.8	11.8
	12	1,017,140 13.1	925,159 11.1	660,472 7.7	128,021 4.2	532,451 8.5	219,744 26.0	147,869 44.6	71,875 0.4	44,944 0.2	91,981 38.0	703,998 10.8	313,142 18.5	1,047,167 26.4	10,761,319 3.5	12.2
	23 年 1月	598,001 10.7	569,693 10.5	406,896 10.2	67,670 27.8	339,226 15.3	124,228 12.5	78,183 19.3	46,045 2.2	38,570 6.3	28,308 15.5	429,726 4.9	168,275 22.9	691,734 10.6	10,701,230 0.1	12.2
	2	872,915 19.5	830,555 12.4	579,864 21.8	122,446 57.5	457,418 14.8	205,900 4.7	150,694 9.1	55,206 9.9	44,791 3.8	42,360 -	598,256 28.3	274,659 4.0	851,293 0.5	10,729,120 1.0	12.2
	3	2,008,484 11.0	1,912,367 8.2	1,461,505 1.4	204,212 16.6	1,257,293 3.8	393,822 28.2	257,213 33.1	136,608 16.6	57,040 7.3	96,117 44.7	1,499,843 6.0	508,640 23.1	- -	- -	-
累 計	H22.4 ~ 23.3	10,068,475 5.2	9,554,775 4.9	6,980,213 2.6	1,213,889 1.8	5,766,324 3.5	2,028,050 12.1	1,246,512 18.7	781,538 0.9	546,512 5.0	513,701 9.1	7,119,461 2.0	2,949,014 12.0	- -	- -	-

### 建設工事受注動態統計調査（大手50社調査） 結果表

1. 受注高（平成23年3月分）

（単位：百万円，％）

発注者別	工事種類別	建										土					木				合計	前年同月比	
		事務所 庁舎	宿泊 施設	店舗	工場 発電所	倉庫 流通 施設	住宅	教育 研究 文化施設	医療 福祉施設	娯楽 施設	その他	計	治山 治水	鉄道	上水道 下水道	土地造成	港湾 空港	道路	電線路	その他			計
民間 製造 等 業	製造業	15,745	129	3,760	131,799	5,698	2,588	8,967	3,183	25	8,823	180,718	213	27	246	3,060	2,755	203	590	16,400	23,494	204,212	16.6
	農林漁業	682	0	0	512	409	0	0	11	0	574	2,188	0	0	0	0	0	0	0	5	5	2,193	891.9
	鉱業、採石業、砂利採取業、建設業	2,192	1,600	1,447	1,866	26	3,196	345	311	570	863	12,418	0	408	22	1,332	19	19	256	365	2,421	14,839	13.5
	電気・ガス・熱供給・水道業	5,033	10	46	1,666	411	937	165	991	27	243	9,528	744	0	0	13	8	345	7,007	11,078	19,196	28,724	59.7
	運輸業、郵便業	8,146	1,097	8,660	2,175	32,316	6,661	91	9	20	12,861	72,036	2	65,965	0	1,559	73	2,429	226	2,729	72,983	145,019	1.1
	情報通信業	17,631	15	431	727	2	99	476	0	206	6,547	25,723	8	3	0	0	0	0	4,557	1,811	6,363	32,085	18.8
	卸売業、小売業	6,428	5,050	28,451	2,095	7,246	1,319	730	919	337	1,631	44,106	0	29	0	73	374	58	1	582	971	45,077	12.8
	金融業、保険業	57,922	420	1,439	14	15	563	1,929	97	210	1,835	64,445	0	1	0	8	1	1	0	407	417	64,862	32.0
	不動産業	85,550	23,449	38,508	248	514	293,188	2,886	11,611	874	8,585	464,384	0	211	1,229	6,865	139	3	33	5,641	14,120	478,504	10.3
	サービス業	48,223	6,201	7,465	4,772	15,466	61,841	66,407	175,446	4,851	16,473	394,743	90	26	296	376	448	212	277	3,369	5,094	399,836	0.9
その他	8,643	5,367	878	325	2,139	18,148	149	1,706	95	1,993	39,444	0	767	1	5,209	7	244	259	222	6,710	46,153	170.2	
小計	240,451	20,707	87,325	14,400	57,515	385,952	73,179	191,102	6,777	51,607	1,129,014	828	67,411	1,548	15,290	1,067	3,310	12,616	26,208	128,279	1,257,293	3.8	
計	256,197	20,837	91,085	146,199	63,213	388,540	82,146	194,284	6,802	60,430	1,309,732	1,041	67,437	1,795	18,350	3,822	3,513	13,206	42,608	151,773	1,461,505	1.4	
公共 機関	国	13,984	0	0	3	225	714	1,538	421	0	8,830	24,287	20,439	0	1,095	73	17,978	49,618	661	19,915	109,778	134,065	38.5
	独立行政法人	174	0	0	304	0	3,521	2,781	20,521	13	434	27,748	827	22,123	13,314	6,411	0	1,247	675	1,211	45,808	73,556	7.1
	政府関連企業等	207	2	807	0	0	967	2,716	4,797	50	1,269	10,816	384	123	2,158	27	95	35,562	62	366	38,776	49,592	49.1
	小計	14,365	2	807	307	225	3,775	7,036	25,738	63	10,533	62,851	21,650	22,245	16,567	6,511	18,073	86,427	1,398	21,492	194,363	257,213	33.1
	都道府県	2,727	0	3	1	3	5,538	1,059	783	41	49	10,205	8,489	0	1,667	2,634	2,390	9,666	85	1,535	26,297	36,502	22.2
	市区町村	8,931	13	2	317	20	1,553	24,130	14,812	255	564	50,596	991	118	6,180	213	284	388	126	1,334	9,633	60,229	10.8
	地方公営企業	10	0	1	19	0	0	10	16	0	3,205	3,261	0	1,244	14,207	48	0	1,500	131	96	17,131	20,392	18.1
	その他	165	0	6	10,833	0	647	102	4,762	0	22	16,536	0	5	151	245	0	775	1	1,772	2,949	19,485	20.4
	小計	11,833	13	11	11,170	24	7,737	25,300	20,373	296	3,841	80,599	9,480	1,367	22,205	3,045	2,674	12,329	173	4,737	56,010	136,608	16.6
	計	26,198	15	818	11,477	248	11,512	32,336	46,111	359	14,374	143,449	31,130	23,612	38,772	9,557	20,747	98,755	1,571	26,229	250,372	393,822	28.2
駐留軍・外国公館	15	0	0	0	0	85	0	0	0	71	171	0	0	0	0	5	26	0	78	99	270	68.0	
小口工事											14,027										42,744	56,770	8.5
国内	282,410	20,852	91,903	157,676	63,461	400,137	114,482	240,396	7,161	74,874	1,467,379	32,171	91,050	40,567	27,907	24,564	102,294	14,777	68,916	444,988	1,912,367	8.2	
前年同月比	34.5	9.0	42.2	12.5	67.6	25.6	35.0	93.2	76.4	22.2	4.7	29.5	5.7	6.0	42.9	52.3	35.0	33.4	30.1	18.1	8.2	-	
海外	12,165	10	7,921	18,296	34	10,714	2,630	67	5	4,962	32,464	193	15,230	542	6,069	539	36,708	158	5,291	63,653	96,117	44.7	
前年同月比	-	95.7	966.3	900.3	3300.0	27.6	294.6	-	-	85.0	42.0	98.7	79.7	83.1	63.6	-	803.4	60.9	601.2	46.0	44.7	-	
総計	270,244	20,862	99,824	175,972	63,495	410,851	117,112	240,463	7,156	79,836	1,499,843	32,364	106,280	41,109	33,975	24,025	139,001	14,935	74,207	508,640	2,008,484	11.0	
前年同月比	38.0	7.7	37.5	24.0	67.6	23.2	33.7	93.4	76.4	38.3	6.0	18.4	34.1	0.9	6.1	55.8	13.9	33.9	25.4	23.1	11.0	-	

2. 施工高及び未消化工事高（平成23年2月分）

	合計	建築	土木	前年同月比
施工高（月間）	851,293	584,582	266,710	0.5
未消化工事高（月末）	10,729,120	7,507,714	3,221,406	1.0
手持工事月数	12.2	12.5	11.6	-

3. 大規模工事（受注高10億円以上の国内工事）（平成23年3月分）

	合計		建築		土木		大規模工事比率
	件数	受注高	件数	受注高	件数	受注高	
合計	399	1,100,407	329	954,764	70	145,643	57.5%
民間等	323	908,832	293	856,843	30	51,990	
公共機関	76	191,575	36	97,922	40	93,654	前年同月比 19.0%

4. ブロック別受注高（平成23年2月分）

	北海道	東北	関東	北陸	中部	近畿	中国	四国	九州・沖縄
受注高	31,114	32,001	364,405	19,640	100,105	125,002	41,229	16,149	56,118
前年同月比	10.1	22.3	11.4	33.4	55.9	11.3	37.1	15.6	23.4

5. 施工都道府県別受注高（平成23年2月分）

都道府県名	受注額	都道府県名	受注額	都道府県名	受注額	都道府県名	受注額	都道府県名	受注額
北海道	31,114	栃木	2,234	石川	2,066	滋賀	4,559	岡山	11,187
青森	7,832	群馬	2,242	福井	3,245	京都	8,145	広島	15,287
岩手	1,838	埼玉	32,488	山梨	7,672	大阪	67,010	山口	13,129
宮城	9,865	千葉	34,894	長野	4,936	兵庫	36,728	徳島	1,680
秋田	3,524	東京	201,789	岐阜	8,220	奈良	7,433	香川	519
山形	1,909	神奈川	66,549	静岡	22,416	和歌山	1,127	愛媛	12,002
福島	7,034	新潟	10,081	愛知	49,412	鳥取	469	高知	1,947
茨城	11,601	富山	4,248	三重	20,058	島根	1,156	福岡	17,294
								計	785,765

注：「2. 施工高及び未消化工事高、手持工事月数」、「4. ブロック別受注高」及び「5. 都道府県別受注高」の数値については、前月分の値である。

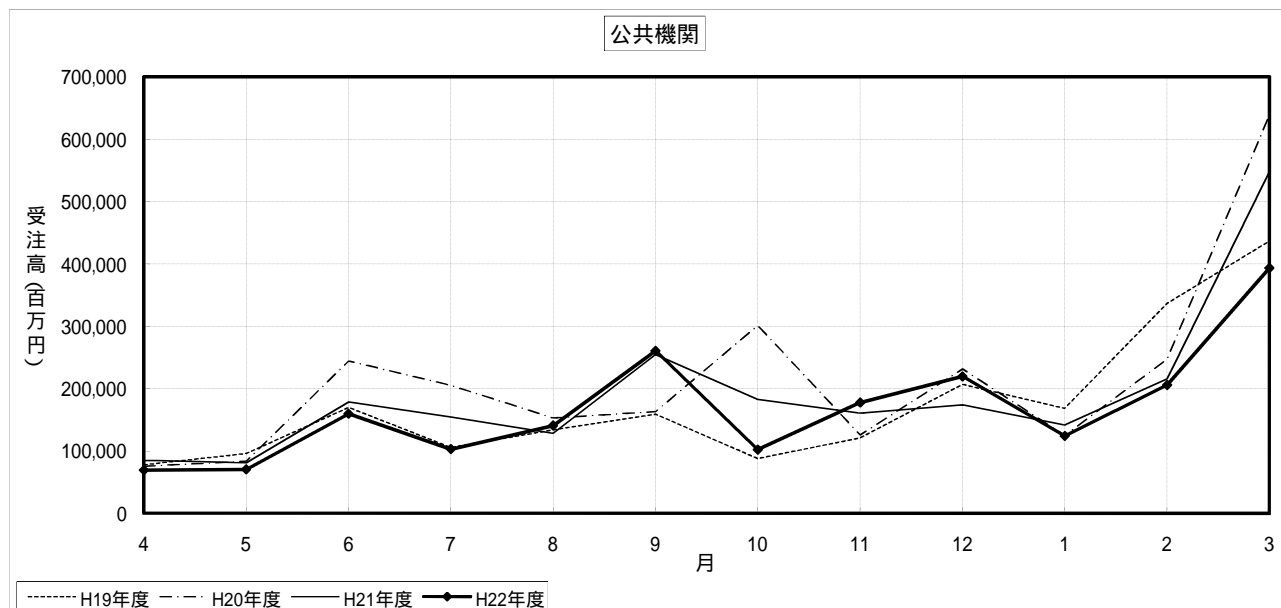
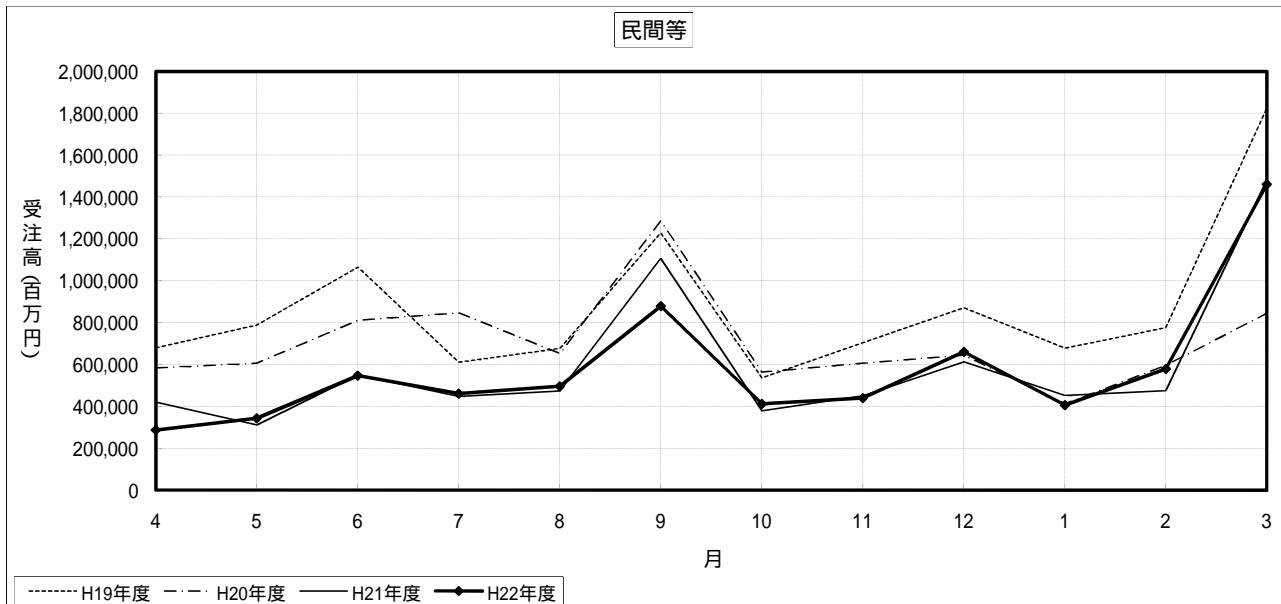
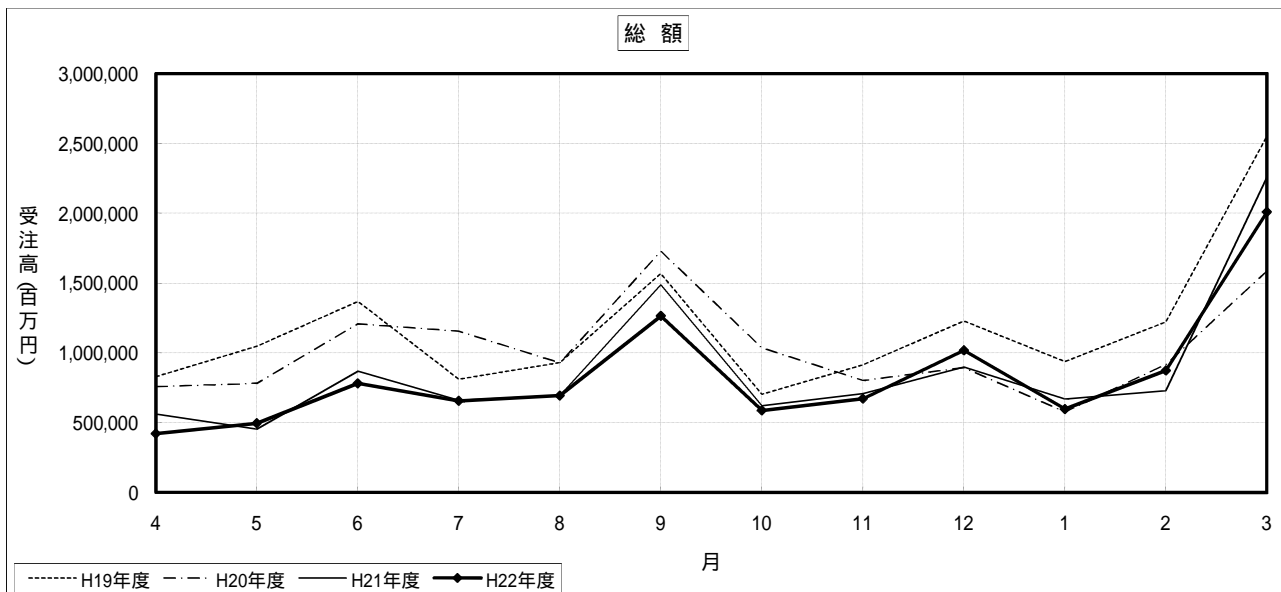
建設工事受注動態統計調査（大手50社調査） 寄与度表

寄与度（平成23年3月分）

工事種類別		建										土			木				合計			
		事務所 庁舎	宿泊 施設	店舗	工場 発電所	倉庫 流通施設	住宅	教育 研究 文化施設	医療 福祉施設	娯楽 施設	その他	計	治山 治水	鉄道	上水道 下水道	土地造成	港湾 空港	道路		電線路	その他	計
民間 製造 業	製造業	-0.33			1.48	0.40	0.12		0.13		0.18	1.22			-0.10					-0.24	-0.25	1.19
	農林漁業																					
	鉱業，採石業，砂利採取業，建設業	-0.28	0.14				-0.15					-0.16										-0.10
	電気・ガス・熱供給・水道業	0.12			-1.10				0.13			-0.99	-0.12						0.24	-0.80	-0.90	-1.89
	運輸業，郵便業	-0.17		-0.69		0.81	0.16	-0.10	-0.39		-0.52	-0.35		0.48						-0.33	0.42	2.56
	情報通信業	0.27	-0.11									0.23								-0.10		0.22
	卸売業，小売業	0.11	-0.11	-0.80	0.20	0.22	0.47					-0.21										-0.29
	金融業，保険業	0.59										0.68										0.70
	不動産業	-4.97	0.62	-1.70		-0.57	3.63	-0.29	0.47	0.20	0.12	24.24		-0.26		0.25					0.41	-2.45
	サービス業	-1.80	-0.58	-0.45	0.33	0.62	2.06	-1.50	4.92	-0.75	0.61	0.40								-0.23	-0.24	0.16
その他	0.25	0.21				0.62					1.06				0.20						0.22	0.25
小計	-5.88	1.21	-3.03	-1.18	1.21	4.34	-1.66	5.36	1.29	1.38	38.89		0.53		0.50				-0.11	-1.01		-2.20
計	-6.21	1.13	-2.99	0.30	1.15	4.45	-1.65	5.49	-0.94	-0.25	-0.58	-0.12	0.53	-0.14	0.44				0.15	-1.25	-0.34	40.14
公共 機関	国	-0.57					-0.23	-0.34	-0.45		-0.69	-1.62	0.39				-1.09	-1.37		-2.10	-3.72	
	独立行政法人						-0.57	-0.21	0.77		0.54		-0.18	0.52	-0.34				-0.43	0.31	0.22	
	政府関連企業等							-1.15	0.18		-0.20	-1.01		-0.36				-0.94	-0.10	-1.11	-2.12	
	小計	-0.65					-0.82	-1.46	0.93	0.11	-0.70	-2.73	-1.82	-1.18	-0.42	-0.26	-1.12	-2.32		-0.15	-2.90	-5.63
	都道府県	0.11					0.23	0.16	-0.62			-0.36	0.13		0.12			-0.25	0.13		-0.10	-0.61
	市区町村	0.15						0.52	-0.35			-0.13	0.58		-0.26				-0.18		-0.55	-0.32
	地方公営企業											0.14	-0.17	-0.11	-0.27						-0.33	-0.20
その他				0.48		-0.31		-0.31			-0.19						-0.24		-0.19	-0.43	-0.22	
小計	0.27			0.48		0.50	0.39	-1.29	-0.11		-0.19		-0.11	-0.55			-0.60	-0.27	-0.19	-1.01	-1.20	
計	-0.38			0.48		-0.83	-1.07	-0.35		-0.70	-2.92	0.33	-0.31	-1.55	-0.16	-1.20	-2.39	-0.25	-0.60	-3.92	-6.84	
駐留軍・外国公館						-0.66					-0.65											-0.64
小口工事											0.29											0.20
国内		-6.59	1.06	-2.97	0.78	1.13	3.61	-2.73	5.14	-1.03	-0.95	-3.22	0.32	0.22	0.10	0.37	-1.19	-2.44	-0.33	-1.32	-4.36	-7.58
海外		-0.75		0.32	0.18		-0.18				-1.25	-1.04	-0.65	-2.66	-0.12	0.98	-0.15	0.65		0.20	-2.40	-3.44
総計		-7.33	1.07	-2.65	1.51	1.13	3.43	-2.64	5.15	-1.03	-2.19	-4.26	-0.32	-2.44	-1.68	0.27	-1.34	-0.99	-0.34	-1.12	-6.76	-11.03

注) 1. 寄与度が0.1に満たない項目は，便宜上空欄としている。

# 建設工事受注動態統計調査（大手50社調査）の推移



建設工事受注動態統計調査(大手50社調査)季節変動調整済 時系列表

		総計	民間等									公共機関							海外						
			計	製造業	非製造業						計	国の機関			地方の機関										
					小計	農林漁業	運輸・通信業	電気・ガス業	卸売・小売業	金融・保険業		不動産業	サービス業	その他	小計	国	公団・事業団	政府関連企業		小計	都道府県	市区町村	地方公営企業	その他	
昭和59年	4月	805,783	450,248	-	-	-	-	-	-	-	-	-	282,391	134,187	62,341	-	-	-	-	157,748	62,125	69,046	30,258	11,301	50,176
	5	874,581	501,585	-	-	-	-	-	-	-	-	-	254,370	96,415	51,226	-	-	-	-	149,612	59,145	61,641	18,047	15,519	93,343
	6	877,737	525,659	-	-	-	-	-	-	-	-	-	267,441	124,906	63,666	-	-	-	-	145,140	45,950	65,948	21,384	15,389	47,379
	7	914,513	530,616	-	-	-	-	-	-	-	-	-	282,360	113,013	43,020	-	-	-	-	170,552	55,471	72,308	27,687	14,284	66,096
	8	999,051	572,831	-	-	-	-	-	-	-	-	-	306,698	180,200	42,956	-	-	-	-	151,288	43,166	70,938	24,582	15,754	69,960
	9	981,065	607,367	-	-	-	-	-	-	-	-	-	288,745	121,917	49,945	-	-	-	-	163,724	62,334	62,219	22,845	14,592	52,132
	10	962,272	542,534	-	-	-	-	-	-	-	-	-	291,846	136,745	46,186	-	-	-	-	156,099	52,630	71,348	19,812	11,436	76,653
	11	1,028,096	613,554	-	-	-	-	-	-	-	-	-	288,703	156,299	59,559	-	-	-	-	148,156	44,389	62,956	19,260	13,747	81,154
	12	967,645	597,426	-	-	-	-	-	-	-	-	-	277,959	154,522	55,551	-	-	-	-	116,241	38,364	44,766	16,641	16,970	75,423
60年	1月	935,394	532,778	-	-	-	-	-	-	-	-	-	279,662	122,962	45,449	-	-	-	-	149,456	70,324	58,515	18,337	12,077	106,552
	2	987,928	587,860	-	-	-	-	-	-	-	-	-	260,219	130,212	51,501	-	-	-	-	129,948	25,660	72,962	15,116	8,397	99,898
	3	1,067,846	615,651	-	-	-	-	-	-	-	-	-	342,334	158,824	49,509	-	-	-	-	156,682	61,797	79,677	14,189	12,415	104,825
	4	986,248	576,992	-	-	-	-	-	-	-	-	-	267,313	133,986	26,406	-	-	-	-	141,557	62,729	61,901	12,538	15,499	85,173
	5	1,023,794	654,336	-	-	-	-	-	-	-	-	-	269,071	141,525	68,962	-	-	-	-	135,444	52,200	60,183	14,648	11,355	68,076
	6	963,008	556,993	-	-	-	-	-	-	-	-	-	280,716	131,037	41,418	-	-	-	-	153,024	48,272	68,930	25,477	14,392	89,136
	7	959,785	544,457	-	-	-	-	-	-	-	-	-	275,844	149,005	45,372	-	-	-	-	132,071	38,146	61,502	12,113	95,769	
	8	921,666	586,472	-	-	-	-	-	-	-	-	-	249,244	117,811	49,241	-	-	-	-	141,836	51,057	65,104	14,581	11,506	52,518
	9	997,346	646,146	-	-	-	-	-	-	-	-	-	263,826	118,973	42,525	-	-	-	-	137,223	45,277	66,041	11,447	13,061	59,272
	10	1,242,202	703,206	-	-	-	-	-	-	-	-	-	272,411	144,437	59,931	-	-	-	-	127,625	44,403	60,171	13,565	9,216	214,200
	11	1,014,239	628,960	-	-	-	-	-	-	-	-	-	280,986	124,704	42,575	-	-	-	-	162,707	50,659	73,041	19,899	10,103	60,592
	12	909,593	588,560	-	-	-	-	-	-	-	-	-	295,015	132,035	38,111	-	-	-	-	156,962	44,552	65,224	40,718	9,225	20,108
61年	1月	1,037,184	581,628	-	-	-	-	-	-	-	-	-	272,454	145,543	53,997	-	-	-	-	119,694	39,873	55,198	24,333	11,076	142,147
	2	1,044,008	635,599	-	-	-	-	-	-	-	-	-	324,190	147,826	35,419	-	-	-	-	178,106	54,187	59,751	28,459	13,176	58,242
	3	1,069,601	684,110	-	-	-	-	-	-	-	-	-	324,463	140,729	59,444	-	-	-	-	173,716	45,983	95,925	24,376	15,151	31,724
	4	966,306	609,013	-	-	-	-	-	-	-	-	-	220,598	127,375	45,554	-	-	-	-	100,534	33,963	60,580	10,795	5,864	63,603
	5	1,040,639	629,938	-	-	-	-	-	-	-	-	-	336,172	141,417	59,075	-	-	-	-	191,427	76,557	76,740	26,110	14,545	43,781
	6	1,061,003	663,348	-	-	-	-	-	-	-	-	-	288,854	133,891	57,362	-	-	-	-	158,578	53,505	75,622	17,193	13,699	62,406
	7	1,050,139	682,363	-	-	-	-	-	-	-	-	-	297,167	141,760	60,439	-	-	-	-	160,985	46,476	74,155	20,415	16,500	21,237
	8	1,113,084	682,205	-	-	-	-	-	-	-	-	-	331,789	136,710	53,932	-	-	-	-	200,204	66,157	79,478	42,888	13,076	39,501
	9	1,045,702	624,844	-	-	-	-	-	-	-	-	-	331,070	148,340	59,494	-	-	-	-	169,013	56,537	79,449	22,290	9,304	57,267
	10	1,029,414	632,992	-	-	-	-	-	-	-	-	-	299,885	115,598	46,943	-	-	-	-	188,818	67,619	74,294	32,411	13,956	49,382
	11	1,016,515	650,811	-	-	-	-	-	-	-	-	-	249,326	105,975	34,245	-	-	-	-	147,637	56,528	47,086	21,034	15,189	70,583
	12	1,164,173	734,379	-	-	-	-	-	-	-	-	-	385,061	209,093	74,569	-	-	-	-	172,714	61,381	81,739	24,193	11,103	42,561
62年	1月	1,141,503	789,536	-	-	-	-	-	-	-	-	-	297,539	115,379	56,134	-	-	-	-	176,956	80,440	85,558	15,169	13,572	46,055
	2	1,082,497	749,612	-	-	-	-	-	-	-	-	-	261,047	130,273	53,768	-	-	-	-	131,302	28,542	68,474	15,912	13,106	41,973
	3	1,066,683	708,377	-	-	-	-	-	-	-	-	-	274,621	126,625	41,775	-	-	-	-	132,540	48,229	64,104	15,582	11,202	51,731
	4	1,125,831	746,891	-	-	-	-	-	-	-	-	-	260,938	121,976	46,105	-	-	-	-	148,080	62,760	72,804	15,167	9,603	26,037
	5	1,142,554	766,998	-	-	-	-	-	-	-	-	-	297,191	137,607	62,450	-	-	-	-	162,255	48,379	77,034	21,112	12,925	48,091
	6	1,193,124	771,302	-	-	-	-	-	-	-	-	-	342,525	164,798	53,298	-	-	-	-	184,181	70,072	71,265	34,125	10,675	44,561
	7	1,214,119	778,759	-	-	-	-	-	-	-	-	-	322,725	137,771	62,228	-	-	-	-	190,357	81,407	79,466	20,821	12,796	54,108
	8	1,171,700	777,666	-	-	-	-	-	-	-	-	-	307,252	150,716	61,414	-	-	-	-	166,325	56,264	77,353	18,823	13,839	43,788
	9	1,276,796	788,562	-	-	-	-	-	-	-	-	-	384,510	163,939	74,178	-	-	-	-	203,975	64,765	84,649	28,740	23,490	88,099
	10	1,300,174	878,657	-	-	-	-	-	-	-	-	-	314,720	134,075	57,882	-	-	-	-	183,397	56,350	86,023	19,721	19,715	59,420
	11	1,335,066	901,291	-	-	-	-	-	-	-	-	-	333,538	131,949	56,798	-	-	-	-	204,584	68,995	87,476	21,839	16,345	37,211
	12	1,238,496	834,912	-	-	-	-	-	-	-	-	-	347,277	140,361	59,850	-	-	-	-	203,908	76,747	87,714	20,441	24,344	36,121
63年	1月	1,282,611	919,257	-	-	-	-	-	-	-	-	-	338,673	160,072	56,107	-	-	-	-	170,276	54,964	92,007	24,587	19,733	11,506
	2	1,318,322	861,727	-	-	-	-	-	-	-	-	-	387,975	154,270	70,609	-	-	-	-	235,958	66,264	107,642	27,345	19,101	41,840
	3	1,221,441	828,878	-	-	-	-	-	-	-	-	-	338,883	138,435	58,585	-	-	-	-	208,079	85,943	79,441	30,345	16,117	309
	4	1,533,449	1,003,087	-	-	-	-	-	-	-	-	-	361,165	167,952	80,017	-	-	-	-	203,670	54,684	85,338	27,013	29,376	41,791
	5	1,350,410	940,023	-	-	-	-	-	-	-	-	-	332,708	142,934	61,787	-	-	-	-	188,847	61,253	85,027	19,645	18,787	50,431
	6	1,428,599	1,005,114	-	-	-	-	-	-	-	-	-	356,482	128,055	66,938	-	-	-	-	221,816	83,286				

	12	1,955,895	1,424,924	-	-	-	-	-	-	-	-	-	-	424,529	177,040	57,677	-	-	247,621	68,172	115,036	48,215	23,033	88,077
2年	1月	1,856,856	1,380,138	-	-	-	-	-	-	-	-	-	-	303,048	112,650	72,180	-	-	176,936	55,051	94,265	31,010	19,121	75,684
	2	1,843,445	1,344,534	-	-	-	-	-	-	-	-	-	-	376,440	143,764	59,960	-	-	232,519	77,247	100,386	16,053	19,633	74,349
	3	1,909,918	1,431,524	-	-	-	-	-	-	-	-	-	-	408,480	168,888	71,189	-	-	243,308	61,257	137,105	35,312	19,210	83,658
	4	2,487,031	1,652,026	-	-	-	-	-	-	-	-	-	-	508,287	233,607	89,484	-	-	278,810	91,164	120,386	37,201	26,902	84,715
	5	2,222,501	1,687,410	-	-	-	-	-	-	-	-	-	-	416,264	166,570	40,467	-	-	243,735	69,100	103,561	39,083	20,117	80,855
	6	2,319,083	1,845,304	-	-	-	-	-	-	-	-	-	-	395,670	164,256	53,067	-	-	236,111	81,863	104,934	27,555	26,335	64,700
	7	2,131,647	1,580,032	-	-	-	-	-	-	-	-	-	-	446,978	165,331	58,492	-	-	285,550	130,222	101,084	34,452	41,704	50,095
	8	2,232,823	1,773,515	-	-	-	-	-	-	-	-	-	-	432,959	153,180	65,445	-	-	272,331	96,842	121,073	25,667	28,573	41,548
	9	2,077,123	1,663,475	-	-	-	-	-	-	-	-	-	-	340,002	117,010	45,984	-	-	224,351	73,752	101,879	21,059	22,715	43,875
	10	2,147,606	1,589,743	-	-	-	-	-	-	-	-	-	-	484,561	205,191	72,260	-	-	281,248	95,654	109,480	59,311	19,308	46,769
	11	2,323,068	1,686,462	-	-	-	-	-	-	-	-	-	-	463,346	193,826	68,600	-	-	271,093	81,736	124,791	37,070	24,339	121,664
	12	2,187,293	1,629,164	-	-	-	-	-	-	-	-	-	-	501,505	196,310	80,092	-	-	305,031	84,817	129,137	76,290	21,312	35,969
3年	1月	2,129,973	1,528,372	-	-	-	-	-	-	-	-	-	-	470,633	149,203	88,350	-	-	292,990	139,094	119,960	25,138	26,487	47,257
	2	2,302,721	1,693,856	-	-	-	-	-	-	-	-	-	-	497,548	243,043	95,816	-	-	242,698	49,760	131,256	15,819	33,466	56,027
	3	2,172,503	1,632,918	-	-	-	-	-	-	-	-	-	-	500,317	221,817	80,316	-	-	259,473	109,939	127,926	21,965	22,220	69,780
	4	2,567,968	1,752,729	-	-	-	-	-	-	-	-	-	-	525,924	248,797	79,576	-	-	275,276	79,921	136,662	28,751	31,136	44,629
	5	2,240,716	1,670,433	-	-	-	-	-	-	-	-	-	-	506,349	241,783	85,641	-	-	279,443	100,591	122,566	28,951	11,145	43,269
	6	2,132,957	1,587,562	-	-	-	-	-	-	-	-	-	-	447,953	193,552	87,173	-	-	265,953	87,984	124,747	34,525	22,765	73,689
	7	2,177,815	1,623,359	-	-	-	-	-	-	-	-	-	-	467,080	193,909	95,290	-	-	279,367	90,080	125,850	36,223	34,478	45,377
	8	2,132,171	1,524,183	-	-	-	-	-	-	-	-	-	-	522,929	205,360	74,954	-	-	315,787	86,627	171,230	38,613	24,265	69,458
	9	2,252,299	1,662,924	-	-	-	-	-	-	-	-	-	-	491,217	194,739	74,438	-	-	302,466	94,410	139,921	35,228	23,650	40,237
	10	2,042,445	1,449,412	-	-	-	-	-	-	-	-	-	-	512,804	206,182	79,102	-	-	307,258	99,289	115,594	34,292	46,950	40,805
	11	1,961,092	1,268,177	-	-	-	-	-	-	-	-	-	-	544,941	204,087	95,042	-	-	332,230	102,378	142,344	32,489	49,762	75,332
	12	2,019,161	1,399,054	-	-	-	-	-	-	-	-	-	-	504,171	211,396	80,942	-	-	291,452	83,768	140,269	31,087	39,179	84,219
4年	1月	1,900,401	1,300,133	-	-	-	-	-	-	-	-	-	-	450,160	192,320	70,234	-	-	223,676	81,647	113,157	39,650	9,462	52,832
	2	2,485,568	1,777,730	-	-	-	-	-	-	-	-	-	-	595,905	258,813	93,098	-	-	326,359	79,748	163,499	39,739	25,561	56,392
	3	2,435,056	1,884,518	-	-	-	-	-	-	-	-	-	-	499,548	187,681	77,488	-	-	334,642	76,898	119,254	38,802	71,902	135,056
	4	1,864,797	1,249,702	-	-	-	-	-	-	-	-	-	-	423,783	206,625	90,386	-	-	211,972	63,716	117,719	18,719	19,945	31,709
	5	1,853,204	1,180,098	-	-	-	-	-	-	-	-	-	-	550,069	232,907	101,325	-	-	327,384	98,833	149,018	31,665	37,176	73,263
	6	1,848,848	1,210,354	-	-	-	-	-	-	-	-	-	-	559,456	364,007	74,789	-	-	244,446	79,459	125,727	19,530	24,793	41,268
	7	1,958,078	1,226,066	-	-	-	-	-	-	-	-	-	-	625,116	329,386	95,876	-	-	318,650	93,883	164,564	32,308	27,401	85,519
	8	2,000,038	1,004,063	-	-	-	-	-	-	-	-	-	-	766,744	263,352	96,536	-	-	480,733	220,657	162,057	28,824	65,510	129,459
	9	1,992,814	1,248,419	-	-	-	-	-	-	-	-	-	-	671,274	264,073	108,204	-	-	415,059	131,632	186,892	49,381	34,822	-26,418
	10	1,944,429	1,271,679	-	-	-	-	-	-	-	-	-	-	549,040	204,499	106,073	-	-	344,555	114,021	165,906	39,487	22,893	88,383
	11	1,824,460	1,173,704	-	-	-	-	-	-	-	-	-	-	533,423	213,588	84,088	-	-	313,284	106,144	142,655	29,797	21,942	53,741
	12	1,661,859	1,033,589	-	-	-	-	-	-	-	-	-	-	534,406	230,855	97,557	-	-	297,985	127,552	133,823	25,669	19,392	58,018
5年	1月	2,020,020	1,206,430	-	-	-	-	-	-	-	-	-	-	687,404	272,093	166,164	-	-	367,560	141,406	179,589	25,886	25,182	42,811
	2	1,783,694	1,100,250	-	-	-	-	-	-	-	-	-	-	577,049	240,691	98,768	-	-	327,261	98,010	144,906	33,947	35,732	63,993
	3	1,920,514	1,334,076	-	-	-	-	-	-	-	-	-	-	552,216	223,234	107,504	-	-	335,599	102,432	174,059	37,335	31,852	47,089
	4	1,592,751	945,129	-	-	-	-	-	-	-	-	-	-	520,153	234,014	109,765	-	-	284,001	107,524	154,244	28,065	20,583	51,791
	5	1,599,337	960,008	-	-	-	-	-	-	-	-	-	-	554,319	186,461	91,987	-	-	361,033	109,013	181,349	29,695	25,835	37,071
	6	1,564,802	925,625	-	-	-	-	-	-	-	-	-	-	563,296	173,396	109,550	-	-	390,224	120,610	210,064	34,425	28,065	36,681
	7	1,320,941	783,068	-	-	-	-	-	-	-	-	-	-	443,498	196,312	100,639	-	-	264,398	90,124	129,686	26,833	17,523	73,047
	8	1,509,928	916,740	-	-	-	-	-	-	-	-	-	-	465,218	183,876	74,302	-	-	279,714	93,774	125,865	37,382	27,612	83,803
	9	1,605,301	929,625	-	-	-	-	-	-	-	-	-	-	526,722	236,761	103,551	-	-	282,747	107,349	122,317	22,302	23,640	88,706
	10	1,484,748	896,932	-	-	-	-	-	-	-	-	-	-	504,079	226,161	95,651	-	-	267,588	55,363	149,124	25,412	31,026	65,665
	11	1,552,560	884,140	-	-	-	-	-	-	-	-	-	-	521,268	255,963	91,472	-	-	274,119	91,252	114,812	30,202	28,472	68,360
	12	1,602,649	976,769	-	-	-	-	-	-	-	-	-	-	528,957	230,429	91,750	-	-	290,983	68,592	144,137	44,809	30,194	72,735
6年	1月	1,804,157	1,007,678	-	-	-	-	-	-	-	-	-	-	626,950	250,051	109,440	-	-	342,737	98,024	168,042	34,190	52,059	76,986
	2	1,598,974	969,766	-	-	-	-	-	-	-	-	-	-	512,693	190,708	83,301	-	-	320,566	109,226	158,517	33,341	17,250	73,018
	3	1,574,317	935,703	-	-	-	-	-	-	-	-	-	-	577,649	243,908	134,941	-	-	332,758	114,235	154,283	40,940	28,390	58,468
	4	1,529,768	848,483	-	-	-	-	-	-	-	-	-	-	562,417	195,598	101,528	-	-	379,055	114,253	204,778	52,228	28,575	72,762
	5	1,367,079	852,088	-	-	-	-	-	-	-	-	-	-	386,521	172,303	74,596	-	-	235,099	76,927	108,324	12,152	31,702	69,831
	6	1,553,505	918,071	-	-	-	-	-	-	-	-	-	-	494,105	206,538	82,091	-	-	302,221	97,415	141,302	49,484	24,236	86,787
	7	1,568,245	968,738	-	-	-	-	-	-	-	-	-	-	504,591	170,224	70,672	-	-	353,489	133,606	150,761	39,364	33,116	66,302
	8	1,678,266	1,063,843	-	-	-	-	-	-	-	-	-	-	517,625	190,246	86,726	-	-	317,632	93,009	151,943	26,459	55,191	49,427
	9	1,481,580	904,629	-	-	-	-	-	-	-	-	-	-	483,019	168,231	52,981	-	-	302,388	93,386	138,581	39,088	30,648	5,478
	10	1,592,782	968,772	-	-	-	-	-	-	-	-	-	-	511,390	231,188	95,669	-	-	265,768	94,159	135,963	26,706	11,516	98,060
	11	1,882,618	1,017,055	-	-	-	-	-	-	-	-	-	-	690,787	273,557	151,599	-	-	406,256	136,326</				

	2	1,685,719	996,935	-	-	-	-	-	-	-	-	-	-	579,532	281,656	163,881	-	-	296,047	107,086	140,800	27,808	33,393	63,020
	3	1,525,496	876,589	-	-	-	-	-	-	-	-	-	-	533,759	239,320	124,171	-	-	283,115	76,677	146,681	28,597	30,717	88,132
	4	1,756,634	1,042,491	-	-	-	-	-	-	-	-	-	-	522,905	214,814	110,415	-	-	334,208	110,976	145,378	33,722	45,921	100,111
	5	1,641,873	994,705	-	-	-	-	-	-	-	-	-	-	482,293	207,979	109,446	-	-	291,335	98,565	129,538	24,725	27,964	107,828
	6	1,576,413	967,531	-	-	-	-	-	-	-	-	-	-	457,519	212,115	88,513	-	-	256,717	71,430	133,677	29,872	21,232	89,497
	7	1,626,482	1,007,832	-	-	-	-	-	-	-	-	-	-	479,562	250,824	91,669	-	-	264,334	87,502	124,818	28,207	19,665	84,417
	8	1,688,959	949,315	-	-	-	-	-	-	-	-	-	-	529,879	208,717	104,965	-	-	311,915	100,587	131,374	36,465	42,376	141,345
	9	2,393,682	1,578,616	-	-	-	-	-	-	-	-	-	-	642,998	257,995	111,491	-	-	356,635	70,942	183,634	45,978	66,223	125,076
	10	1,713,958	957,777	-	-	-	-	-	-	-	-	-	-	596,458	249,890	104,439	-	-	326,444	135,406	117,697	34,802	34,232	138,775
	11	1,521,575	883,304	-	-	-	-	-	-	-	-	-	-	488,506	187,368	84,682	-	-	289,529	90,540	126,443	26,962	36,543	82,766
	12	1,342,345	745,648	-	-	-	-	-	-	-	-	-	-	487,870	181,041	70,010	-	-	296,401	120,920	131,246	33,138	21,983	93,136
9年	1月	1,630,354	963,911	-	-	-	-	-	-	-	-	-	-	493,533	230,938	116,443	-	-	251,051	74,750	117,396	27,961	22,011	119,667
	2	1,477,597	896,938	-	-	-	-	-	-	-	-	-	-	443,278	191,210	100,230	-	-	252,861	66,243	118,116	25,316	60,484	83,074
	3	1,559,656	956,540	-	-	-	-	-	-	-	-	-	-	456,502	202,020	104,592	-	-	254,094	76,334	126,113	23,286	29,937	163,641
	4	1,552,240	918,863	-	-	-	-	-	-	-	-	-	-	440,982	211,895	99,782	-	-	269,169	101,396	118,769	19,291	33,005	88,657
	5	1,792,762	1,179,142	-	-	-	-	-	-	-	-	-	-	453,823	236,901	85,214	-	-	248,615	59,206	130,433	24,591	21,387	103,875
	6	1,496,788	888,562	-	-	-	-	-	-	-	-	-	-	502,855	266,842	159,235	-	-	257,031	109,557	119,928	28,412	16,326	55,025
	7	1,667,715	1,001,733	-	-	-	-	-	-	-	-	-	-	476,668	205,059	120,532	-	-	297,153	97,313	128,006	28,297	38,087	129,967
	8	1,593,600	932,721	-	-	-	-	-	-	-	-	-	-	489,443	213,907	103,164	-	-	273,443	86,620	126,127	23,098	27,757	110,527
	9	1,601,030	1,007,624	-	-	-	-	-	-	-	-	-	-	440,988	165,632	56,022	-	-	257,719	84,893	120,001	23,241	38,783	106,867
	10	1,559,235	1,014,384	-	-	-	-	-	-	-	-	-	-	464,833	181,975	105,422	-	-	267,072	94,062	118,778	26,795	25,858	72,741
	11	1,624,741	1,002,723	-	-	-	-	-	-	-	-	-	-	470,640	192,023	82,118	-	-	269,491	80,306	118,100	24,597	43,032	84,357
	12	1,454,888	906,345	-	-	-	-	-	-	-	-	-	-	458,531	229,165	104,240	-	-	236,563	74,260	101,801	19,472	45,473	65,648
10年	1月	1,373,154	949,505	-	-	-	-	-	-	-	-	-	-	347,809	176,358	87,993	-	-	162,737	38,833	61,153	23,047	36,387	63,069
	2	1,448,773	898,509	-	-	-	-	-	-	-	-	-	-	404,935	163,358	92,564	-	-	244,098	126,090	100,643	22,041	20,831	89,599
	3	1,415,653	903,965	-	-	-	-	-	-	-	-	-	-	408,320	179,695	97,283	-	-	235,418	87,318	84,783	24,767	33,889	91,601
	4	1,402,384	870,110	-	-	-	-	-	-	-	-	-	-	285,247	126,808	68,339	-	-	195,034	60,594	91,272	20,412	20,361	96,949
	5	1,334,181	872,369	-	-	-	-	-	-	-	-	-	-	402,740	153,104	73,830	-	-	234,227	74,260	93,232	23,999	34,981	43,271
	6	1,460,741	913,964	-	-	-	-	-	-	-	-	-	-	434,331	167,888	83,983	-	-	265,202	68,806	129,939	27,809	37,851	66,129
	7	1,440,444	876,415	-	-	-	-	-	-	-	-	-	-	453,861	269,814	108,992	-	-	209,604	68,420	88,825	21,512	27,543	70,305
	8	1,351,042	815,256	-	-	-	-	-	-	-	-	-	-	424,640	193,128	90,131	-	-	231,457	73,360	108,047	18,973	18,618	52,021
	9	1,441,692	821,335	-	-	-	-	-	-	-	-	-	-	526,084	275,093	153,498	-	-	227,256	75,501	113,717	19,361	21,963	42,590
	10	1,370,372	805,159	-	-	-	-	-	-	-	-	-	-	476,873	212,428	109,838	-	-	255,065	73,561	102,079	38,813	32,160	58,010
	11	1,278,138	797,918	-	-	-	-	-	-	-	-	-	-	419,658	227,020	111,231	-	-	201,124	66,195	91,140	24,247	20,009	18,052
	12	1,435,973	801,510	-	-	-	-	-	-	-	-	-	-	431,988	173,857	85,193	-	-	256,869	64,423	96,953	31,697	63,515	160,888
11年	1月	1,187,694	744,307	-	-	-	-	-	-	-	-	-	-	407,935	177,717	67,129	-	-	218,592	61,423	122,568	20,530	8,396	50,688
	2	1,390,477	795,879	-	-	-	-	-	-	-	-	-	-	497,133	220,700	108,051	-	-	276,282	65,272	134,400	59,524	28,538	43,012
	3	1,431,663	893,178	-	-	-	-	-	-	-	-	-	-	501,740	232,912	106,272	-	-	265,207	62,744	141,107	33,746	27,930	-71,792
	4	1,256,999	679,145	-	-	-	-	-	-	-	-	-	-	473,473	310,561	110,650	-	-	245,692	69,055	101,732	40,489	26,531	55,146
	5月	1,214,484	725,851	-	-	-	-	-	-	-	-	-	-	431,701	170,753	81,706	-	-	240,891	76,040	99,106	32,663	16,899	50,420
	6	1,212,744	768,285	-	-	-	-	-	-	-	-	-	-	368,820	192,200	114,755	-	-	191,295	56,405	83,778	21,086	34,840	41,639
	7	1,156,615	705,338	-	-	-	-	-	-	-	-	-	-	378,626	189,611	80,547	-	-	202,257	52,544	97,811	27,615	17,979	32,484
	8	1,276,528	782,979	-	-	-	-	-	-	-	-	-	-	405,082	198,214	104,044	-	-	211,613	69,622	86,452	22,067	23,553	32,813
	9	1,365,563	832,554	-	-	-	-	-	-	-	-	-	-	449,729	210,258	110,750	-	-	225,146	65,373	112,478	31,582	14,470	26,361
	10	1,144,804	763,792	-	-	-	-	-	-	-	-	-	-	306,415	134,822	79,961	-	-	165,571	57,666	63,910	16,066	19,475	49,295
	11	1,304,625	817,817	-	-	-	-	-	-	-	-	-	-	370,506	207,887	107,366	-	-	167,527	59,325	76,348	20,983	17,521	67,726
	12	1,263,429	876,742	-	-	-	-	-	-	-	-	-	-	294,576	157,117	61,896	-	-	145,922	52,047	73,472	15,225	15,311	47,262
12年	1月	1,479,517	1,057,637	154,371	909,033	1,962	89,319	56,413	70,929	37,249	330,871	187,623	119,599	406,159	206,622	90,438	90,772	12,519	189,009	67,075	74,505	20,073	12,368	39,981
	2	1,419,914	862,113	132,277	735,140	3,148	86,780	44,140	69,852	16,823	229,199	194,516	90,976	429,073	222,088	84,838	90,278	47,132	200,177	65,573	77,899	7,959	66,393	66,916
	3	1,501,527	1,024,864	141,836	826,545	3,307	98,751	45,784	66,647	16,165	275,404	200,561	125,109	407,391	191,566	94,435	77,530	16,694	60,777	89,153	37,973	22,743	29,552	
	4	1,277,141	818,673	129,432	721,366	1,617	96,734	28,880	50,482	25,215	209,802	178,367	84,645	297,474	174,733	71,563	83,496	15,881	48,347	83,615	11,225	24,597	44,281	
	5	1,395,425	829,617	180,438	644,664	1,844	75,341	31,068	48,305	17,248	197,914	199,717	70,416	493,572	167,000	109,496	63,619	16,604	283,767	45,761	145,106	41,610	24,691	60,866
	6	1,365,694	807,826	139,741	681,790	2,838	57,461	18,928	61,119	24,333	206,358	219,348	75,780	376,253	252,130	81,683	115,022	62,052	157,476	48,053	78,011	15,864	21,273	117,466
	7	1,087,581	668,428	135,002	556,341	1,023	88,066	20,099	42,612	15,800	171,425	152,477	69,398	335,790	169,055	90,121	52,438	24,698	178,250	53,839	72,215	19,367	31,867	21,065
	8	1,220,101	780,924	149,423	643,968	1,638	62,357	18,076	58,106	21,588	178,318	211,857	76,742	334,721	160,179	74,155	45,701	38,305	174,835	48,028	69,802	31,468	23,346	42,126
	9	1,243,434	786,688	134,915	659,197	1,593	64,941	29,719	43,081	20,519	250,151	176,161	66,591	343,350	170,716	78,731	50,670	36,487	163,362	54,797	65,004	26,369	18,828	54,100
	10	1,209,162	724,794	156,150	569,664	873	68,587	16,501	38,505	18,411	220,720	159,325	49,881	387,904	200,177	69,272	88,8							



	4	974,711	610,576	84,301	613,883	1,481	66,488	15,920	34,673	15,157	209,344	188,155	43,551	296,633	195,852	102,540	37,512	58,529	116,725	41,992	50,609	14,826	8,424	40,192
	5	1,143,505	681,793	80,554	630,921	677	70,550	12,236	38,884	17,843	258,148	166,056	68,422	412,473	207,466	98,640	39,572	120,354	194,355	54,415	84,352	19,577	21,874	59,392
	6	916,523	607,835	75,570	584,089	981	56,895	20,375	28,893	17,770	241,242	173,208	40,005	209,701	105,714	59,964	31,975	16,135	104,707	41,208	52,172	12,986	8,363	54,582
	7	1,192,053	701,415	118,457	599,368	1,851	63,189	23,054	43,386	18,441	206,966	206,588	41,875	343,236	249,185	146,751	106,610	34,182	119,293	38,777	56,736	19,241	5,840	72,478
	8	1,046,721	658,804	91,561	582,668	855	59,031	23,037	31,555	16,407	213,474	185,039	39,732	283,899	147,527	77,963	55,995	17,617	140,600	37,101	66,095	21,258	11,793	52,785
	9	1,069,928	668,406	104,216	565,483	901	59,756	19,205	38,187	21,349	209,980	169,095	44,125	298,964	145,945	82,746	46,710	13,819	147,889	47,451	58,027	22,519	21,056	69,078
	10	1,198,273	771,351	91,198	729,745	1,400	65,955	14,888	34,783	27,509	354,704	192,286	44,596	299,806	148,648	100,951	37,971	13,308	146,171	41,152	61,608	28,254	9,478	67,639
	11	1,044,079	658,947	95,529	577,640	108	53,242	14,551	39,233	14,087	234,785	180,185	39,858	313,179	145,081	91,344	33,214	32,618	158,933	37,266	57,461	42,772	32,352	41,399
	12	1,015,069	617,180	90,674	545,585	954	48,602	8,769	40,262	13,166	202,021	179,370	47,744	319,079	185,403	85,036	56,221	30,029	140,518	51,367	55,505	17,437	17,893	24,218
15年	1月	985,583	663,837	108,002	545,289	1,883	61,208	12,867	40,519	19,343	184,310	180,385	43,923	264,496	139,235	95,741	28,351	118,270	28,638	57,873	25,190	14,492	47,853	
	2	1,039,926	683,307	105,564	535,328	1,136	64,998	14,614	37,376	14,436	207,236	155,482	35,649	273,015	140,490	87,242	47,157	11,104	134,077	43,125	45,352	28,549	12,516	40,765
	3	1,016,550	667,971	94,375	501,188	1,294	64,344	11,312	26,294	19,647	179,199	176,922	40,425	251,269	137,286	73,621	33,687	22,423	109,363	36,078	37,470	17,554	10,228	31,230
	4	1,073,509	664,775	-	-	-	-	-	-	-	-	-	-	334,444	151,222	80,926	-	-	177,201	30,556	105,071	31,259	6,953	72,933
	5	1,101,960	796,316	-	-	-	-	-	-	-	-	-	-	245,327	138,397	74,823	-	-	105,022	24,728	43,628	23,467	6,729	48,160
	6	1,013,552	694,372	-	-	-	-	-	-	-	-	-	-	261,581	130,582	71,288	-	-	128,158	39,968	63,972	22,991	13,147	29,157
	7	1,052,386	680,404	-	-	-	-	-	-	-	-	-	-	248,736	137,357	57,739	-	-	121,890	40,849	57,023	14,566	10,213	49,021
	8	1,026,560	680,295	-	-	-	-	-	-	-	-	-	-	254,649	144,211	84,036	-	-	117,023	30,440	55,845	16,717	11,593	45,520
	9	1,022,832	683,205	-	-	-	-	-	-	-	-	-	-	254,023	139,982	77,143	-	-	113,022	31,969	48,157	21,535	11,006	46,385
	10	1,101,585	733,183	-	-	-	-	-	-	-	-	-	-	256,676	144,459	66,627	-	-	111,657	35,232	50,189	7,604	10,731	55,944
	11	1,068,160	750,698	-	-	-	-	-	-	-	-	-	-	222,546	127,537	70,332	-	-	97,050	28,787	50,805	15,349	8,749	53,284
	12	1,085,753	722,563	-	-	-	-	-	-	-	-	-	-	244,364	138,131	65,107	-	-	109,049	26,825	49,753	21,037	10,908	73,684
16年	1月	1,025,084	663,316	-	-	-	-	-	-	-	-	-	-	290,875	170,785	86,223	-	-	111,967	36,820	66,431	13,070	8,225	56,054
	2	999,283	663,472	-	-	-	-	-	-	-	-	-	-	233,122	132,862	70,673	-	-	99,932	32,272	48,381	14,660	7,304	61,290
	3	1,057,232	718,316	-	-	-	-	-	-	-	-	-	-	248,446	138,503	75,053	-	-	105,503	24,498	49,468	18,510	8,320	-2,394
	4	1,113,531	798,030	-	-	-	-	-	-	-	-	-	-	198,976	74,394	47,851	-	-	117,060	30,915	58,827	18,533	8,538	67,746
	5	1,067,357	763,154	-	-	-	-	-	-	-	-	-	-	226,596	113,578	59,354	-	-	109,485	29,198	39,613	20,936	15,288	55,440
	6	1,171,696	843,135	-	-	-	-	-	-	-	-	-	-	215,115	98,244	37,388	-	-	105,557	40,554	54,533	18,115	11,994	71,596
	7	1,107,707	758,008	-	-	-	-	-	-	-	-	-	-	232,632	143,490	57,850	-	-	98,379	25,599	44,454	12,806	14,991	46,831
	8	1,110,493	783,985	-	-	-	-	-	-	-	-	-	-	212,623	138,530	52,441	-	-	85,238	22,733	38,964	19,936	6,202	68,202
	9	1,115,633	836,265	-	-	-	-	-	-	-	-	-	-	196,640	112,171	52,977	-	-	84,818	17,130	47,372	9,798	5,982	38,335
	10	1,101,044	773,215	-	-	-	-	-	-	-	-	-	-	227,621	145,341	71,089	-	-	89,929	21,609	42,503	11,377	10,079	48,653
	11	1,119,109	790,385	-	-	-	-	-	-	-	-	-	-	249,435	156,688	55,840	-	-	99,287	20,799	54,787	12,871	12,371	38,558
	12	1,081,943	792,422	-	-	-	-	-	-	-	-	-	-	199,067	110,321	76,599	-	-	90,289	21,487	47,291	13,034	6,029	37,865
17年	1月	1,179,540	855,123	-	-	-	-	-	-	-	-	-	-	218,771	107,091	51,261	-	-	102,344	26,926	45,276	34,117	9,518	90,520
	2	852,597	569,041	-	-	-	-	-	-	-	-	-	-	193,013	104,275	55,227	-	-	90,775	30,776	43,622	16,207	3,340	52,490
	3	1,324,516	774,694	-	-	-	-	-	-	-	-	-	-	377,252	240,197	160,300	-	-	102,188	25,275	53,739	13,578	8,924	86,956
	4	1,158,125	861,660	-	-	-	-	-	-	-	-	-	-	215,972	126,066	73,840	-	-	79,889	19,145	41,309	12,469	8,357	45,962
	5	1,085,420	763,885	-	-	-	-	-	-	-	-	-	-	245,322	160,130	85,886	-	-	100,089	22,838	48,288	13,306	648	53,257
	6	1,075,155	798,788	-	-	-	-	-	-	-	-	-	-	190,982	120,711	33,508	-	-	70,833	24,341	38,311	17,736	2,918	44,651
	7	1,350,905	827,003	-	-	-	-	-	-	-	-	-	-	265,806	156,639	64,430	-	-	116,374	25,419	53,988	27,998	6,297	174,869
	8	1,113,947	826,732	-	-	-	-	-	-	-	-	-	-	222,241	124,791	52,023	-	-	101,194	28,553	50,262	15,427	8,060	19,788
	9	1,118,916	807,112	-	-	-	-	-	-	-	-	-	-	256,369	147,738	94,099	-	-	110,776	25,064	52,100	22,566	5,948	32,964
	10	1,115,813	762,501	-	-	-	-	-	-	-	-	-	-	231,427	106,476	60,700	-	-	120,268	33,556	46,179	22,083	4,207	53,147
	11	1,069,298	759,031	-	-	-	-	-	-	-	-	-	-	179,661	96,908	43,499	-	-	83,994	24,139	36,215	12,902	7,459	77,516
	12	1,217,333	869,946	-	-	-	-	-	-	-	-	-	-	205,798	107,610	43,363	-	-	98,649	26,751	37,681	20,022	6,160	81,183
18年	1月	916,421	727,757	-	-	-	-	-	-	-	-	-	-	141,530	77,204	44,250	-	-	59,272	20,579	27,015	18,625	2,552	45,590
	2	1,068,622	819,038	-	-	-	-	-	-	-	-	-	-	160,944	74,357	47,738	-	-	95,380	17,935	30,103	33,127	7,883	72,453
	3	1,139,181	829,894	-	-	-	-	-	-	-	-	-	-	186,817	106,195	48,895	-	-	76,886	25,346	28,179	12,117	8,507	47,842
	4	1,172,638	851,926	-	-	-	-	-	-	-	-	-	-	233,593	140,989	129,597	-	-	85,264	30,761	40,163	12,396	4,602	55,444
	5	1,103,207	837,276	-	-	-	-	-	-	-	-	-	-	135,210	69,586	37,871	-	-	68,018	4,859	34,866	12,768	5,714	56,718
	6	1,079,950	777,653	-	-	-	-	-	-	-	-	-	-	178,846	118,611	83,904	-	-	59,204	12,136	30,605	11,448	17,831	74,663
	7	1,082,750	786,776	-	-	-	-	-	-	-	-	-	-	132,528	59,734	42,423	-	-	73,501	15,717	32,271	15,614	5,777	108,210
	8	1,240,752	891,669	-	-	-	-	-	-	-	-	-	-	190,724	109,918	63,240	-	-	85,735	17,860	40,347	15,840	11,896	94,459
	9	1,209,000	758,825	-	-	-	-	-	-	-	-	-	-	186,412	107,738	71,655	-	-	81,018	20,697	30,367	19,187	9,899	339,275
	10	1,229,971	957,094	-	-	-	-	-	-	-	-	-	-	163,570	95,508	39,536	-	-	71,063	20,806	14,845	18,070	15,464	51,503
	11	1,171,160	843,178	-	-	-	-	-	-	-	-	-	-	194,007	104,878	67,867	-	-	90,704	26,821	29,458	21,898	2,487	78,887
	12	1,139,042	861,545	-	-	-	-	-	-	-	-	-	-	156,801	93,013	39,766	-	-	67,682	17				

	6	1,170,787	806,896	-	-	-	-	-	-	-	-	-	-	244,226	173,003	52,856	-	-	70,720	75,458	24,470	15,349	3,046	91,471
	7	1,385,716	1,013,400	-	-	-	-	-	-	-	-	-	-	269,759	221,071	136,378	-	-	65,061	18,528	27,931	7,963	5,708	63,992
	8	1,083,953	754,209	-	-	-	-	-	-	-	-	-	-	194,838	158,154	58,349	-	-	47,822	9,600	26,306	10,322	2,847	79,052
	9	1,086,521	818,316	-	-	-	-	-	-	-	-	-	-	129,561	83,346	51,510	-	-	46,924	13,150	18,282	12,821	2,804	190,958
	10	1,425,037	777,745	-	-	-	-	-	-	-	-	-	-	351,770	341,247	118,645	-	-	68,060	15,381	26,001	18,491	2,385	137,676
	11	979,340	728,429	-	-	-	-	-	-	-	-	-	-	168,860	120,331	60,706	-	-	53,761	16,050	25,227	1,830	2,409	46,133
	12	845,294	601,937	-	-	-	-	-	-	-	-	-	-	221,436	123,702	69,255	-	-	101,137	18,871	31,202	40,442	2,275	-40,857
21年	1月	738,483	530,933	-	-	-	-	-	-	-	-	-	-	172,195	123,846	73,752	-	-	43,981	13,218	22,877	11,199	3,345	35,063
	2	968,671	688,854	-	-	-	-	-	-	-	-	-	-	203,750	135,615	83,617	-	-	50,928	10,129	17,866	9,905	8,427	56,598
	3	775,703	415,370	-	-	-	-	-	-	-	-	-	-	229,591	148,228	77,711	-	-	73,799	21,857	40,198	16,613	3,430	-82,117
	4	830,702	565,204	-	-	-	-	-	-	-	-	-	-	209,076	150,152	73,030	-	-	58,636	19,522	24,731	13,708	3,054	42,150
	5	734,541	478,518	-	-	-	-	-	-	-	-	-	-	188,515	161,912	71,726	-	-	53,230	11,206	24,028	11,300	1,886	40,189
	6	840,033	546,667	-	-	-	-	-	-	-	-	-	-	178,214	131,475	65,378	-	-	49,066	9,349	30,066	10,855	3,434	93,212
	7	789,812	533,400	-	-	-	-	-	-	-	-	-	-	207,718	124,415	65,805	-	-	92,832	38,378	35,842	13,171	2,284	29,490
	8	818,025	550,652	-	-	-	-	-	-	-	-	-	-	171,000	117,141	74,513	-	-	57,333	13,944	30,320	10,926	3,057	51,088
	9	927,304	695,277	-	-	-	-	-	-	-	-	-	-	202,951	138,236	71,850	-	-	65,022	23,077	25,673	14,591	2,893	14,189
	10	859,392	523,245	-	-	-	-	-	-	-	-	-	-	213,266	165,582	70,866	-	-	64,195	19,976	29,069	9,236	4,985	38,904
	11	862,934	543,259	-	-	-	-	-	-	-	-	-	-	212,057	147,375	44,064	-	-	72,606	12,953	32,050	10,542	2,033	65,997
	12	840,656	569,378	-	-	-	-	-	-	-	-	-	-	166,543	108,355	52,786	-	-	63,446	16,257	23,626	9,063	9,407	45,631
22年	1月	856,396	582,147	-	-	-	-	-	-	-	-	-	-	191,157	124,702	35,972	-	-	63,897	19,675	37,427	13,365	1,995	64,934
	2	764,830	548,484	-	-	-	-	-	-	-	-	-	-	175,743	106,424	53,165	-	-	63,543	17,875	30,495	14,213	2,016	25,320
	3	1,111,688	730,890	-	-	-	-	-	-	-	-	-	-	197,084	124,131	54,614	-	-	68,733	17,824	41,429	11,301	5,674	52,632
	4	629,622	393,021	-	-	-	-	-	-	-	-	-	-	170,042	102,652	47,709	-	-	65,224	12,883	54,633	12,026	3,115	50,136
	5	806,406	533,312	-	-	-	-	-	-	-	-	-	-	164,723	77,615	36,193	-	-	77,045	26,609	24,438	10,580	8,039	62,496
	6	754,046	544,863	-	-	-	-	-	-	-	-	-	-	160,504	90,398	46,916	-	-	62,439	24,309	27,728	10,907	16,647	24,340
	7	779,474	543,927	-	-	-	-	-	-	-	-	-	-	136,169	88,122	45,526	-	-	55,708	9,609	20,657	13,845	2,943	61,671
	8	823,474	579,079	-	-	-	-	-	-	-	-	-	-	193,654	126,757	51,602	-	-	68,584	17,456	25,373	23,117	1,572	14,328
	9	783,109	546,312	-	-	-	-	-	-	-	-	-	-	207,034	125,263	64,634	-	-	83,259	13,391	55,825	8,303	10,619	37,918
	10	813,468	572,421	-	-	-	-	-	-	-	-	-	-	118,301	97,637	33,734	-	-	31,746	13,442	11,411	3,640	7,439	47,494
	11	816,755	530,951	-	-	-	-	-	-	-	-	-	-	234,245	130,636	78,576	-	-	112,101	31,936	30,657	11,992	18,013	35,721
	12	946,879	611,772	-	-	-	-	-	-	-	-	-	-	209,270	156,213	64,558	-	-	63,638	18,641	23,739	6,366	7,287	67,285
23年	1月	765,391	522,825	-	-	-	-	-	-	-	-	-	-	165,404	99,407	49,305	-	-	65,384	12,574	16,018	11,822	27,317	59,378
	2	910,120	667,374	-	-	-	-	-	-	-	-	-	-	166,645	95,785	43,821	-	-	70,281	23,700	26,860	18,429	1,182	77,044
	3	992,640	722,020	-	-	-	-	-	-	-	-	-	-	141,697	83,929	33,557	-	-	56,557	13,750	36,601	9,164	4,472	-26,567

(單位: %)

59年	4	-	-	-	-	-	-	-	-	-	-	-	-	-	-	-	-	-	-	-	-	-	-	-
	5	8.5	11.4	-	-	-	-	-	-	-	-	-	-	9.9	28.1	17.8	-	-	5.2	4.8	10.7	40.4	37.3	86.0
	6	0.4	4.8	-	-	-	-	-	-	-	-	-	-	5.1	29.6	24.3	-	-	3.0	22.3	7.0	18.5	0.8	49.2
	7	4.2	0.9	-	-	-	-	-	-	-	-	-	-	5.6	9.5	32.4	-	-	17.5	20.7	9.6	29.5	7.2	39.5
	8	9.2	8.0	-	-	-	-	-	-	-	-	-	-	8.6	59.5	0.1	-	-	11.3	22.2	1.9	11.2	10.3	5.8
	9	1.8	6.0	-	-	-	-	-	-	-	-	-	-	5.9	32.3	16.3	-	-	8.2	44.4	12.3	7.1	7.4	25.5
	10	1.9	10.7	-	-	-	-	-	-	-	-	-	-	1.1	12.2	7.5	-	-	4.7	15.6	14.7	13.3	21.6	47.0
	11	6.8	13.1	-	-	-	-	-	-	-	-	-	-	1.1	14.3	29.0	-	-	5.1	15.7	11.8	2.8	20.2	5.9
	12	5.9	2.6	-	-	-	-	-	-	-	-	-	-	3.7	1.1	6.7	-	-	21.5	13.6	28.9	13.6	23.4	7.1
60年	1月	3.3	10.8	-	-	-	-	-	-	-	-	-	-	0.6	20.4	18.2	-	-	28.6	83.3	30.7	10.2	28.8	41.3
	2	5.6	10.3	-	-	-	-	-	-	-	-	-	-	7.0	5.9	13.3	-	-	13.1	63.5	24.7	17.6	30.5	6.2
	3	8.1	4.7	-	-	-	-	-	-	-	-	-	-	31.6	22.0	3.9	-	-	20.6	140.8	9.2	6.1	47.9	4.9
	4	7.6	6.3	-	-	-	-	-	-	-	-	-	-	21.9	15.6	46.7	-	-	9.7	1.5	22.3	11.6	24.8	18.7
	5	3.8	13.4	-	-	-	-	-	-	-	-	-	-	0.7	5.6	161.2	-	-	4.3	16.8	2.8	16.8	26.7	20.1
	6	5.9	14.9	-	-	-	-	-	-	-	-	-	-	4.3	7.4	39.9	-	-	13.0	7.5	14.5	73.9	26.7	30.9
	7	0.3	2.3	-	-	-	-	-	-	-	-	-	-	1.7	13.7	9.5	-	-	13.7	21.0	10.2	35.2	15.8	7.4
	8	4.0	7.7	-	-	-	-	-	-	-	-	-	-	9.6	20.9	8.5	-	-	7.4	33.8	5.1	11.6	5.0	45.2
	9	8.2	10.2	-	-	-	-	-	-	-	-	-	-	5.9	1.0	13.6	-	-	3.3	11.3	1.4	21.5	13.5	12.9
	10	24.6	8.8	-	-	-	-	-	-	-	-	-	-	3.3	21.4	40.9	-	-	7.0	1.9	8.9	18.5	29.4	261.4
	11	18.4	10.6	-	-	-	-	-	-	-	-	-	-	3.1	13.7	29.0	-	-	27.5	14.1	21.4	46.7	9.6	71.7
	12	10.3	6.4	-	-	-	-	-	-	-	-	-	-	5.0	5.9	10.5	-	-	3.5	12.1	10.7	104.6	8.7	66.8
61年	1月	14.0	1.2	-	-	-	-	-	-	-	-	-	-	7.6	10.2	41.7	-	-	23.7	10.5	15.4	40.2	20.1	606.9
	2	0.7	9.3	-	-	-	-	-	-	-	-	-	-	19.0	1.6	34.4	-	-	48.8	35.9	8.2	17.0	19.0	59.0
	3	2.5	7.6	-	-	-	-	-	-	-	-	-	-	0.1	4.8	67.8	-	-	2.5	15.1	60.5	14.3	15.0	45.5
	4	9.7	11.0	-	-	-	-	-	-	-	-	-	-	32.0	9.5	23.4	-	-	42.1	26.1	36.8	55.7	61.3	100.5
	5	7.7	3.4	-	-	-	-	-	-	-	-	-	-	52.4	11.0	29.7	-	-	90.4	125.4	26.7	141.9	148.0	31.2
	6	2.0	5.3	-	-	-	-	-	-	-	-	-	-	14.1	5.3	2.9	-	-	17.2	30.1	1.5	34.2	5.8	42.5
	7	1.0	2.9	-	-	-	-	-	-	-	-	-	-	2.9	5.9	5.4	-	-	1.5	13.1	1.9	18.7	20.4	66.0
	8	6.0	0.0	-	-	-	-	-	-	-	-	-	-	11.7	3.6	10.8	-	-	24.4	42.3	7.2	110.1	20.8	86.0
	9	6.1	8.4	-	-	-	-	-	-	-	-	-	-	0.2	8.5	10.3	-	-	15.6	14.5	0.0	48.0	28.8	45.0
	10	1.6	1.3	-	-	-	-	-	-	-	-	-	-	9.4	22.1	21.1	-	-	11.7	19.6	6.5	45.4	50.0	13.8
	11	1.3	2.8	-	-	-	-	-	-	-	-	-	-	16.9	8.3	27.0	-	-	21.8	16.4	36.6	35.1	8.8	42.9
	12	14.5	12.8	-	-	-	-	-																

	6	4.4	0.6	-	-	-	-	-	-	-	-	-	-	-	-	-	15.3	19.8	14.7	-	-	-	13.5	44.8	7.5	61.6	17.4	7.3
	7	1.8	1.0	-	-	-	-	-	-	-	-	-	-	-	-	-	5.8	16.4	16.8	-	-	-	3.4	16.2	11.5	39.0	19.9	21.4
	8	3.5	0.1	-	-	-	-	-	-	-	-	-	-	-	-	-	4.8	9.4	1.3	-	-	-	12.6	30.9	2.7	9.6	8.2	19.1
	9	9.0	1.4	-	-	-	-	-	-	-	-	-	-	-	-	-	25.1	8.8	20.8	-	-	-	22.6	15.1	9.4	52.7	69.7	101.2
	10	1.8	11.4	-	-	-	-	-	-	-	-	-	-	-	-	-	18.2	18.2	22.0	-	-	-	10.1	13.0	1.6	31.4	16.1	32.6
	11	2.7	2.6	-	-	-	-	-	-	-	-	-	-	-	-	-	6.0	1.6	1.9	-	-	-	11.6	22.4	1.7	10.7	17.1	37.4
	12	7.2	7.4	-	-	-	-	-	-	-	-	-	-	-	-	-	4.1	6.4	5.4	-	-	-	0.3	11.2	0.3	6.4	48.9	2.9
63年	1月	3.6	10.1	-	-	-	-	-	-	-	-	-	-	-	-	-	2.5	14.0	6.3	-	-	-	16.5	28.4	4.9	20.3	18.9	68.1
	2	2.8	6.3	-	-	-	-	-	-	-	-	-	-	-	-	-	14.6	3.6	25.8	-	-	-	38.6	20.6	17.0	11.2	3.2	263.6
	3	7.3	3.8	-	-	-	-	-	-	-	-	-	-	-	-	-	12.7	10.3	17.0	-	-	-	11.8	29.7	26.2	11.0	15.6	99.3
	4	25.5	21.0	-	-	-	-	-	-	-	-	-	-	-	-	-	6.6	21.3	36.6	-	-	-	2.1	36.4	7.4	11.0	82.3	13424.6
	5	11.9	6.3	-	-	-	-	-	-	-	-	-	-	-	-	-	7.9	14.9	22.8	-	-	-	7.3	12.0	0.4	27.3	36.0	20.7
	6	5.8	6.9	-	-	-	-	-	-	-	-	-	-	-	-	-	7.1	10.4	8.3	-	-	-	17.5	36.0	9.1	51.1	13.5	32.9
	7	15.0	12.6	-	-	-	-	-	-	-	-	-	-	-	-	-	6.2	44.9	9.4	-	-	-	8.7	0.2	7.0	28.1	4.7	82.0
	8	15.1	13.3	-	-	-	-	-	-	-	-	-	-	-	-	-	14.9	6.0	0.2	-	-	-	20.1	33.3	19.7	18.5	23.3	27.6
	9	10.8	10.3	-	-	-	-	-	-	-	-	-	-	-	-	-	8.4	41.9	33.2	-	-	-	16.0	6.0	21.9	17.8	2.6	2.2
	10	30.4	29.7	-	-	-	-	-	-	-	-	-	-	-	-	-	28.6	75.0	62.7	-	-	-	8.2	5.4	8.7	9.1	13.3	0.1
	11	8.8	10.1	-	-	-	-	-	-	-	-	-	-	-	-	-	9.4	5.5	0.2	-	-	-	7.3	2.9	20.1	9.0	20.2	1.9
	12	44.6	74.2	-	-	-	-	-	-	-	-	-	-	-	-	-	13.8	17.2	1.6	-	-	-	15.8	10.5	11.9	37.6	25.6	3.7
平成元年	1月	21.8	34.0	-	-	-	-	-	-	-	-	-	-	-	-	-	24.6	14.7	31.5	-	-	-	25.5	44.7	55.2	376.5	3.3	43.0
	2	17.4	17.0	-	-	-	-	-	-	-	-	-	-	-	-	-	17.0	24.9	8.3	-	-	-	5.8	80.9	35.0	75.0	9.8	20.9
	3	4.1	4.9	-	-	-	-	-	-	-	-	-	-	-	-	-	1.2	14.0	21.1	-	-	-	9.9	15.2	20.3	4.3	46.8	9.6
	4	43.5	34.1	-	-	-	-	-	-	-	-	-	-	-	-	-	25.0	6.2	6.5	-	-	-	49.6	61.5	40.1	80.7	2.2	53.8
	5	9.7	4.2	-	-	-	-	-	-	-	-	-	-	-	-	-	15.2	16.8	5.8	-	-	-	6.0	4.2	8.9	19.4	14.4	24.6
	6	3.9	1.0	-	-	-	-	-	-	-	-	-	-	-	-	-	15.7	6.4	33.5	-	-	-	23.8	30.6	19.7	17.7	34.2	15.0
	7	6.9	10.0	-	-	-	-	-	-	-	-	-	-	-	-	-	12.7	25.3	25.7	-	-	-	2.5	7.8	6.5	2.0	32.7	0.8
	8	0.1	2.4	-	-	-	-	-	-	-	-	-	-	-	-	-	19.8	27.8	24.9	-	-	-	14.3	38.0	7.0	58.3	6.2	17.8
	9	6.1	8.0	-	-	-	-	-	-	-	-	-	-	-	-	-	3.0	7.9	1.2	-	-	-	6.0	10.5	5.3	9.7	3.8	32.8
	10	10.1	14.9	-	-	-	-	-	-	-	-	-	-	-	-	-	2.6	10.8	38.0	-	-	-	1.5	2.1	16.0	22.1	11.8	41.6
	11	5.2	4.2	-	-	-	-	-	-	-	-	-	-	-	-	-	5.4	9.4	21.3	-	-	-	6.2	1.4	1.5	3.1	0.3	8.1
	12	2.0	1.7	-	-	-	-	-	-	-	-	-	-	-	-	-	2.9	7.8	17.6	-	-	-	7.4	10.4	8.3	106.3	28.5	58.4
2年	1月	5.1	3.1	-	-	-	-	-	-	-	-	-	-	-	-	-	28.6	36.4	25.1	-	-	-	28.5	19.2	18.1	35.7	17.0	14.1
	2	0.7	2.6	-	-	-	-	-	-	-	-	-	-	-	-	-	24.2	27.6	16.9	-	-	-	31.4	40.3	6.5	48.2	2.7	1.8
	3	3.6	6.5	-	-	-	-	-	-	-	-	-	-	-	-	-	8.5	17.5	18.7	-	-	-	4.6	20.7	36.6	120.0	2.2	12.5
	4	30.2	15.4	-	-	-	-	-	-	-	-	-	-	-	-	-	24.4	38.3	25.7	-	-	-	14.6	48.8	12.2	5.3	40.0	1.3
	5	10.6	2.1	-	-	-	-	-	-	-	-	-	-	-	-	-	18.1	28.7	54.8	-	-	-	12.6	24.2	14.0	5.1	25.2	4.6
	6	4.3	9.4	-	-	-	-	-	-	-	-	-	-	-	-	-	4.9	1.4	31.1	-	-	-	3.1	18.5	1.3	29.5	30.9	20.0
	7	8.1	14.4	-	-	-	-	-	-	-	-	-	-	-	-	-	13.0	0.7	10.2	-	-	-	20.9	59.1	3.7	25.0	58.4	22.6
	8	4.7	12.2	-	-	-	-	-	-	-	-	-	-	-	-	-	3.1	7.3	11.9	-	-	-	4.6	25.6	19.8	25.5	31.5	17.1
	9	7.0	6.2	-	-	-	-	-	-	-	-	-	-	-	-	-	21.5	23.6	29.7	-	-	-	17.6	23.8	15.9	18.0	20.5	5.6
	10	3.4	4.4	-	-	-	-	-	-	-	-	-	-	-	-	-	42.5	75.4	57.1	-	-	-	25.4	29.7	7.5	181.6	15.0	6.6
	11	8.2	6.1	-	-	-	-	-	-	-	-	-	-	-	-	-	4.4	5.5	5.1	-	-	-	3.6	14.6	14.0	37.5	26.1	160.1
	12	5.8	3.4	-	-	-	-	-	-	-	-	-	-	-	-	-	8.2	1.3	16.8	-	-	-	12.5	3.8	3.5	105.8	12.4	70.4
3年	1月	2.6	6.2	-	-	-	-	-	-	-	-	-	-	-	-	-	6.2	24.0	10.3	-	-	-	3.9	64.0	7.1	67.0	24.3	31.4
	2	8.1	10.8	-	-	-	-	-	-	-	-	-	-	-	-	-	5.7	62.9	8.5	-	-	-	17.2	64.2	9.4	37.1	26.3	18.6
	3	5.7	3.6	-	-	-	-	-	-	-	-	-	-	-	-	-	0.6	8.7	16.2	-	-	-	6.9	120.9	2.5	38.9	33.6	24.5
	4	18.2	7.3	-	-	-	-	-	-	-	-	-	-	-	-	-	5.1	12.2	0.9	-	-	-	6.1	27.3	6.8	30.9	40.1	36.0
	5	12.7	4.7	-	-	-	-	-	-	-	-	-	-	-	-	-	3.7	2.8	7.6	-	-	-	1.5	25.9	10.3	0.7	64.2	3.0
	6	4.8	5.0	-	-	-	-	-	-	-	-	-	-	-	-	-	11.5	19.9	1.8	-	-	-	4.8	12.5	1.8	19.3	104.3	70.3
	7	2.1	2.3	-	-	-	-	-	-	-	-	-	-	-	-	-	4.3	0.2	9.3	-	-	-	5.0	2.4	0.9	4.9	51.5	38.4
	8	2.1	6.1	-	-	-	-	-	-	-	-	-	-	-	-	-	12.0	5.9	21.3	-	-	-	13.0	3.8	36.1	6.6	29.6	53.1
	9	5.6	9.1	-	-	-	-	-	-	-	-	-	-	-	-	-	6.1	5.2	0.7	-	-	-	4.2	9.0	18.3	8.8	2.5	42.1
	10	9.3	12.8	-	-	-	-	-	-	-	-	-	-	-	-	-	4.4	5.9	6.3	-	-	-	1.6	5.2	17.4	2.7	98.5	1.4
	11	4.0	12.5	-	-	-	-	-	-	-	-	-	-	-	-	-	6.3	1.0	20.2	-	-	-	8.1	3.1	23.1	5.3	6.0	84.6
	12	3.0	10.3	-	-	-	-	-	-	-	-	-	-	-	-	-	7.5	3.6	14.8	-	-	-	12.3	18.2	1.5	4.3	21.3	11.8
4年	1月	5.9	7.1	-	-	-	-	-	-	-	-	-	-	-	-	-	10.7	9.0	13.2	-	-	-	23.3	2.5	19.3	27.5	75.8	37.3
	2	30.8	36.7	-	-	-	-	-	-	-	-	-	-	-	-	-	32.4	34.6	32.6	-	-	-	45.9	2.3	44.5	0.2	170.1	6.7
	3	2.0	6.0	-	-	-	-	-	-	-	-	-	-	-	-	-	16.2	27.5	16.8	-	-	-	2.5	3.6	27.1	2.4	181.3	139.5
	4	23.4	33.7	-	-	-	-	-	-	-	-	-	-	-	-	-	15.2	10.1	16.6	-	-	-	36.7	17.1	1.3	51.8	72.3	76.5
	5	0.6	5.6	-	-	-	-	-	-	-	-	-	-	-	-	-	29.8	12.7	12.1	-	-	-	54.4	55.1	27.2	69.2	86.4	131.0
	6	0.2	2.6	-	-	-	-	-	-	-	-	-	-	-	-	-	1.7	56.3	26.2	-	-	-	25.3	19.6	16.5	38.3	33.3	43.7
	7	5.9	1.3	-	-	-	-	-	-	-	-	-	-	-	-	-	11.7	9.5	28.2	-	-	-	30.4	18.2	31.6	65.4	10.5	107.2
	8	2.1	18.1	-	-	-	-	-	-	-	-	-	-	-	-	-	22.7	20.0	0.7	-	-	-	50.9	135.0	1.5	10.8	139.1	51.4
	9	0.4	24.3	-	-	-	-	-	-	-	-	-	-	-	-	-	12.5	0.3	12.1	-	-	-	13.7	40.3	15.3	71.3	46.8	120.4
	10	2.4	1.9	-	-	-	-	-	-	-	-	-	-	-	-	-	18.2	22.6	2.0	-	-	-	17.0	13.4	11.2	20.0		





18年	12	13.8	14.6	-	-	-	-	-	-	-	-	-	-	14.5	11.0	0.3	-	-	17.4	10.8	4.0	55.2	17.4	4.7
	1月	24.7	16.3	-	-	-	-	-	-	-	-	-	-	31.2	28.3	2.0	-	-	39.9	23.1	28.3	7.0	58.6	43.8
	2	16.6	12.5	-	-	-	-	-	-	-	-	-	-	13.7	3.7	7.9	-	-	60.9	9.7	11.4	77.9	475.9	58.9
	3	6.6	1.3	-	-	-	-	-	-	-	-	-	-	16.1	42.8	2.4	-	-	19.4	41.3	6.4	63.4	7.9	34.0
	4	2.9	2.7	-	-	-	-	-	-	-	-	-	-	25.0	32.8	165.1	-	-	10.9	21.4	42.5	2.3	45.9	15.9
	5	5.9	1.7	-	-	-	-	-	-	-	-	-	-	42.1	50.6	70.8	-	-	20.2	84.2	13.2	3.0	24.2	2.3
	6	2.1	7.1	-	-	-	-	-	-	-	-	-	-	32.3	70.5	121.6	-	-	13.0	149.8	12.2	10.3	212.1	31.6
	7	0.3	1.2	-	-	-	-	-	-	-	-	-	-	25.9	49.6	49.4	-	-	24.1	29.5	5.4	36.4	67.6	44.9
	8	14.6	13.3	-	-	-	-	-	-	-	-	-	-	43.9	84.0	49.1	-	-	16.6	13.6	25.0	1.4	105.9	12.7
	9	2.6	14.9	-	-	-	-	-	-	-	-	-	-	2.3	2.0	13.3	-	-	5.5	15.9	24.7	21.1	16.8	259.2
	10	1.7	26.1	-	-	-	-	-	-	-	-	-	-	12.3	11.4	44.8	-	-	12.3	0.5	51.1	5.8	56.2	84.8
	11	4.8	11.9	-	-	-	-	-	-	-	-	-	-	18.6	9.8	71.7	-	-	27.6	28.9	98.4	21.2	83.9	53.2
	12	2.7	2.2	-	-	-	-	-	-	-	-	-	-	19.2	11.3	41.4	-	-	25.4	36.0	9.7	55.3	248.4	40.8
19年	1月	7.3	15.3	-	-	-	-	-	-	-	-	-	-	12.4	13.2	24.9	-	-	2.9	36.4	5.4	265.9	37.4	17.2
	2	8.4	16.0	-	-	-	-	-	-	-	-	-	-	16.4	27.0	6.0	-	-	9.0	19.8	26.3	75.7	40.9	12.7
	3	1.8	0.3	-	-	-	-	-	-	-	-	-	-	22.0	24.8	13.1	-	-	14.7	16.3	34.3	74.0	36.4	10.5
	4	5.3	6.0	-	-	-	-	-	-	-	-	-	-	24.5	54.2	19.6	-	-	18.8	8.9	24.3	42.0	24.1	9.4
	5	38.7	32.1	-	-	-	-	-	-	-	-	-	-	6.8	36.6	5.8	-	-	11.4	7.0	3.5	3.2	23.5	142.4
	6	19.2	8.9	-	-	-	-	-	-	-	-	-	-	19.6	46.8	9.3	-	-	21.9	22.9	38.7	255.5	38.5	49.6
	7	27.7	31.3	-	-	-	-	-	-	-	-	-	-	21.8	4.6	3.0	-	-	39.8	3.3	53.0	68.0	28.0	29.0
	8	10.5	6.5	-	-	-	-	-	-	-	-	-	-	20.5	7.4	14.2	-	-	96.7	489.5	1.2	29.7	19.3	43.9
	9	7.3	0.8	-	-	-	-	-	-	-	-	-	-	23.0	11.7	25.9	-	-	44.4	82.4	64.9	23.9	34.5	6.9
	10	3.7	6.4	-	-	-	-	-	-	-	-	-	-	17.7	15.2	28.8	-	-	7.4	29.1	5.1	9.5	32.8	33.0
	11	17.2	15.0	-	-	-	-	-	-	-	-	-	-	60.8	79.5	112.5	-	-	5.6	8.9	13.2	12.9	140.1	19.9
	12	5.2	2.8	-	-	-	-	-	-	-	-	-	-	21.5	23.6	13.7	-	-	40.7	49.0	36.1	74.3	24.0	36.7
20年	1月	0.8	5.6	-	-	-	-	-	-	-	-	-	-	19.8	5.0	12.0	-	-	17.2	251.8	5.0	41.7	82.6	1.6
	2	9.1	3.4	-	-	-	-	-	-	-	-	-	-	19.2	14.5	21.3	-	-	3.6	48.8	23.9	89.2	32.3	1.3
	3	5.2	0.8	-	-	-	-	-	-	-	-	-	-	44.7	43.2	51.1	-	-	43.7	47.0	32.8	36.8	62.5	32.7
	4	10.4	13.7	-	-	-	-	-	-	-	-	-	-	18.0	1.2	18.9	-	-	114.5	63.5	12.9	80.0	1011.1	23.6
	5	13.6	18.8	-	-	-	-	-	-	-	-	-	-	1.6	33.1	49.5	-	-	13.3	81.3	47.0	130.5	98.9	15.8
	6	6.8	11.9	-	-	-	-	-	-	-	-	-	-	29.1	13.6	10.4	-	-	17.3	2626.1	16.3	52.6	1546.5	24.7
	7	18.4	25.6	-	-	-	-	-	-	-	-	-	-	10.5	27.8	158.0	-	-	8.0	75.4	14.1	48.1	87.4	30.0
	8	21.8	25.6	-	-	-	-	-	-	-	-	-	-	27.8	28.5	57.2	-	-	26.5	48.2	5.8	29.6	50.1	23.5
	9	0.2	8.5	-	-	-	-	-	-	-	-	-	-	33.5	47.3	11.7	-	-	1.9	37.0	30.5	24.2	1.5	141.6
	10	31.2	5.0	-	-	-	-	-	-	-	-	-	-	171.5	309.4	130.3	-	-	45.0	17.0	42.2	44.2	14.9	27.9
	11	31.3	6.3	-	-	-	-	-	-	-	-	-	-	52.0	64.7	48.8	-	-	21.0	4.3	3.0	90.1	1.0	66.5
	12	13.7	17.4	-	-	-	-	-	-	-	-	-	-	31.1	2.8	14.1	-	-	88.1	17.6	23.7	2109.9	5.6	188.6
21年	1月	12.6	11.8	-	-	-	-	-	-	-	-	-	-	22.2	0.1	6.5	-	-	56.5	30.0	26.7	72.3	47.0	185.8
	2	31.2	29.7	-	-	-	-	-	-	-	-	-	-	18.3	9.5	13.4	-	-	15.8	23.4	21.9	11.6	151.9	61.4
	3	19.9	39.7	-	-	-	-	-	-	-	-	-	-	12.7	9.3	7.1	-	-	44.9	115.8	125.0	67.7	59.3	245.1
	4	7.1	36.1	-	-	-	-	-	-	-	-	-	-	8.9	1.3	6.0	-	-	20.5	10.7	38.5	17.5	11.0	151.3
	5	11.6	15.3	-	-	-	-	-	-	-	-	-	-	9.8	7.8	1.8	-	-	9.2	42.6	2.8	17.6	38.2	4.7
	6	14.4	14.2	-	-	-	-	-	-	-	-	-	-	5.5	18.8	8.9	-	-	7.8	16.6	25.1	3.9	82.1	131.9
	7	6.0	2.4	-	-	-	-	-	-	-	-	-	-	16.6	5.4	0.7	-	-	89.2	310.5	19.2	21.3	33.5	68.4
	8	3.6	3.2	-	-	-	-	-	-	-	-	-	-	17.7	5.8	13.2	-	-	38.2	63.7	15.4	17.0	33.8	73.2
	9	13.4	26.3	-	-	-	-	-	-	-	-	-	-	18.7	18.0	3.6	-	-	13.4	65.5	15.3	33.5	5.4	72.2
	10	7.3	24.7	-	-	-	-	-	-	-	-	-	-	5.1	19.8	1.4	-	-	1.3	13.4	13.2	36.7	72.3	174.2
	11	0.4	3.8	-	-	-	-	-	-	-	-	-	-	0.6	11.0	37.8	-	-	13.1	35.2	10.3	14.1	59.2	69.6
	12	2.6	4.8	-	-	-	-	-	-	-	-	-	-	21.5	26.5	19.8	-	-	12.6	25.5	26.3	14.0	362.7	30.9
22年	1月	1.9	2.2	-	-	-	-	-	-	-	-	-	-	14.8	15.1	31.9	-	-	0.7	21.0	58.4	47.5	78.8	42.3
	2	10.7	5.8	-	-	-	-	-	-	-	-	-	-	8.1	14.7	47.8	-	-	0.6	9.1	18.5	6.3	1.1	61.0
	3	45.4	33.3	-	-	-	-	-	-	-	-	-	-	12.1	16.6	2.7	-	-	8.2	0.3	35.9	20.5	181.4	107.9
	4	43.4	46.2	-	-	-	-	-	-	-	-	-	-	13.7	17.3	12.6	-	-	5.1	27.7	31.9	6.4	45.1	4.7
	5	28.1	35.7	-	-	-	-	-	-	-	-	-	-	3.1	24.4	24.1	-	-	18.1	106.5	55.3	12.0	158.1	24.7
	6	6.5	2.2	-	-	-	-	-	-	-	-	-	-	2.6	16.5	29.6	-	-	19.0	8.6	13.5	3.1	107.1	61.1
	7	3.4	0.2	-	-	-	-	-	-	-	-	-	-	15.2	2.5	3.0	-	-	10.8	60.5	25.5	26.9	82.3	153.4
	8	5.6	6.5	-	-	-	-	-	-	-	-	-	-	42.2	43.8	13.3	-	-	23.1	81.7	22.8	67.0	46.6	76.8
	9	4.9	5.7	-	-	-	-	-	-	-	-	-	-	6.9	1.2	25.3	-	-	21.4	23.3	120.0	64.1	575.5	164.6
	10	3.9	4.8	-	-	-	-	-	-	-	-	-	-	42.9	22.1	47.8	-	-	61.9	0.4	79.6	56.2	29.9	25.3
	11	0.4	7.2	-	-	-	-	-	-	-	-	-	-	98.0	33.8	132.9	-	-	253.1	137.6	168.7	229.5	142.1	24.8
	12	15.9	15.2	-	-	-	-	-	-	-	-	-	-	10.7	19.6	17.8	-	-	43.2	41.6	22.6	46.9	59.5	88.4
23年	1月	19.2	14.5	-	-	-	-	-	-	-	-	-	-	21.0	36.4	23.6	-	-	2.7	32.5	32.5	85.7	274.9	11.8
	2	18.9	27.6	-	-	-	-	-	-	-	-	-	-	0.8	3.6	11.1	-	-	7.5	88.5	67.7	55.9	95.7	29.8
	3	9.1	8.2	-	-	-	-	-	-	-	-	-	-	15.0	12.4	23.4	-	-	19.5	42.0	36.3	50.3	278.3	134.5