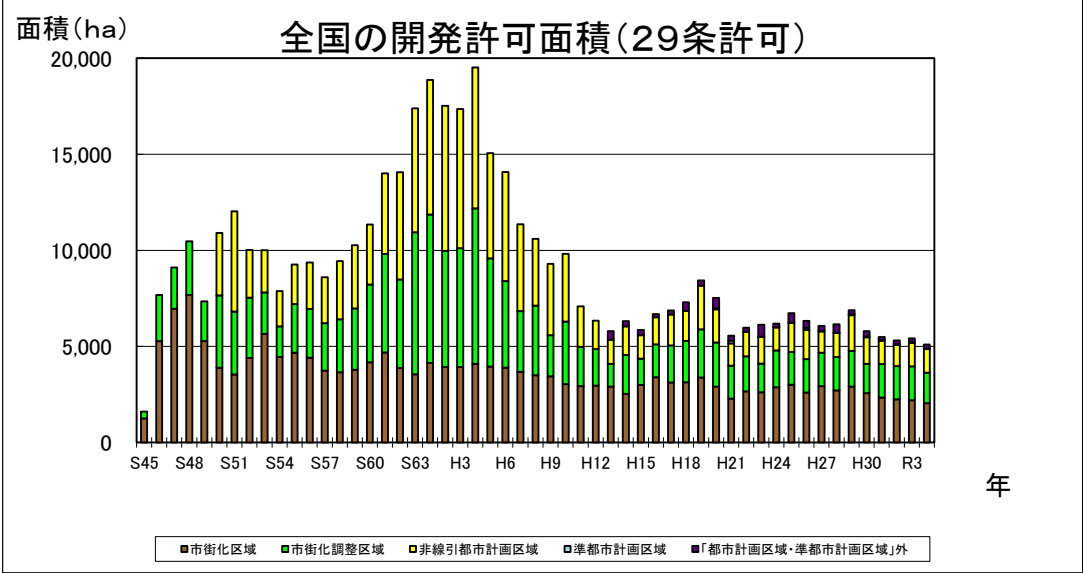
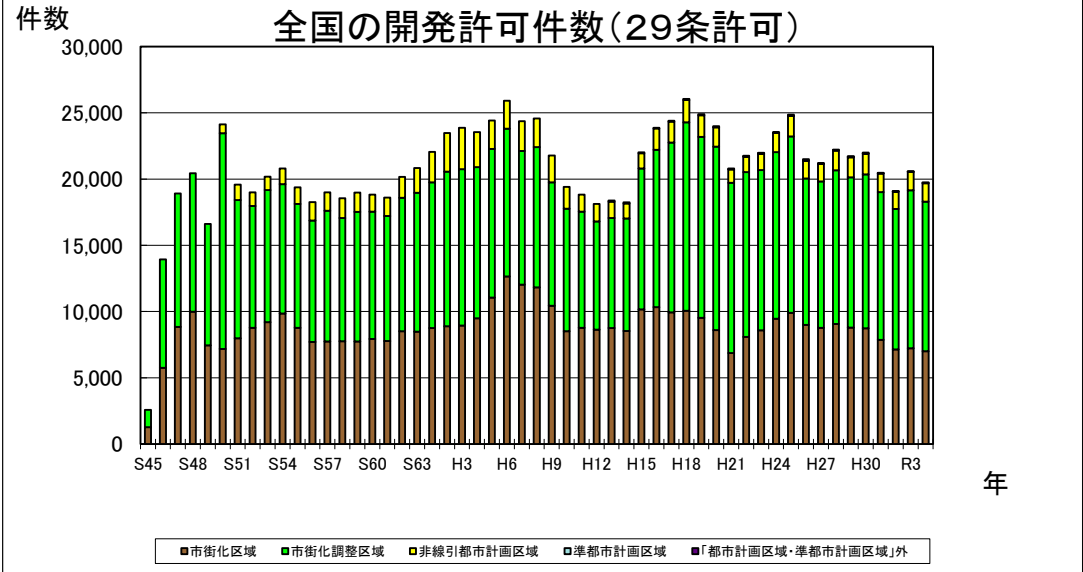


全国の開発許可件数及び面積

令和4年度

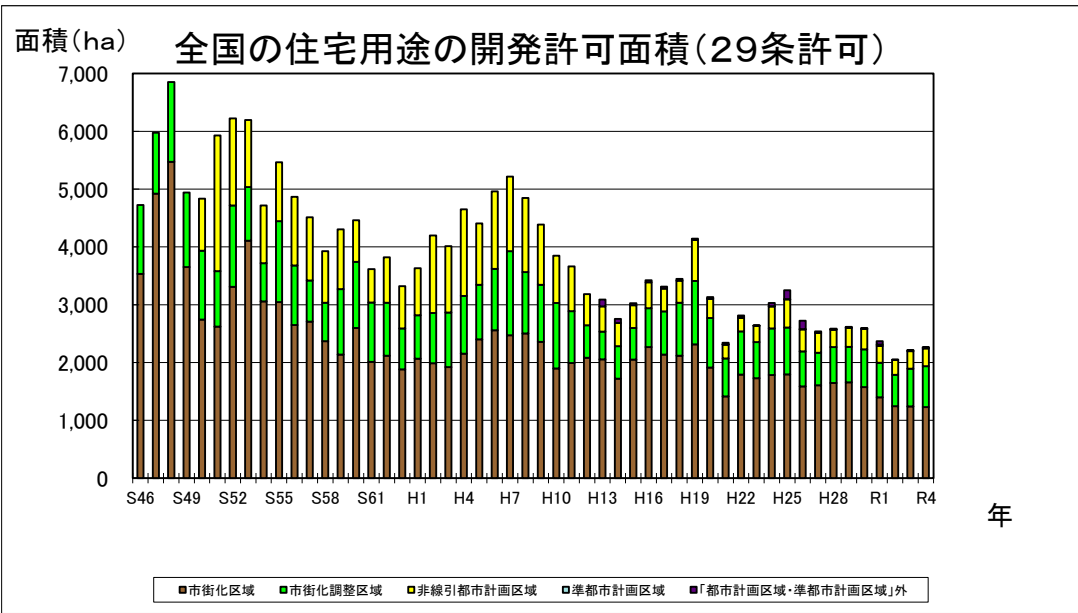
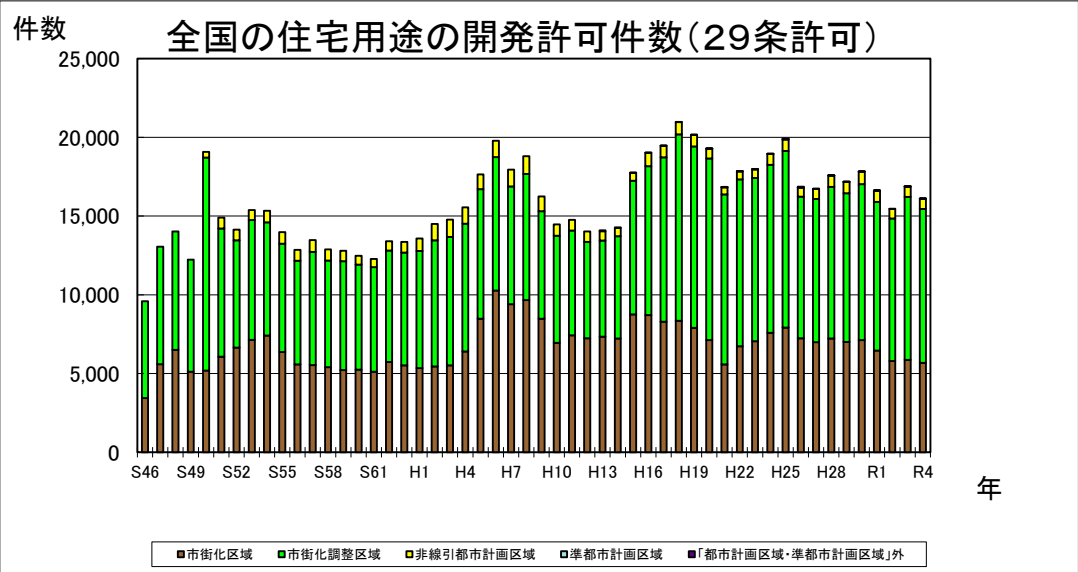
年度	市街化区域		市街化調整区域		非線引都市計画区域		準都市計画区域		「都市計画区域・準都市計画区域」外		合計	
	件数	面積(ha)	件数	面積(ha)	件数	面積(ha)	件数	面積(ha)	件数	面積(ha)	件数	面積(ha)
S45	1,283	1,252.2	1,289	352.7							2,572	1,604.9
S46	5,751	5,268.6	8,179	2,407.1							13,930	7,675.7
S47	8,836	6,958.0	10,071	2,144.7							18,907	9,102.7
S48	9,984	7,681.6	10,460	2,787.5							20,444	10,469.1
S49	7,448	5,270.8	9,173	2,069.8							16,621	7,340.6
S50	7,180	3,893.4	16,287	3,755.7	666	3,256.3					24,133	10,905.4
S51	7,992	3,539.6	10,424	3,272.6	1,171	5,213.0					19,587	12,025.2
S52	8,770	4,404.4	9,197	3,126.1	1,038	2,487.0					19,005	10,017.5
S53	9,194	5,651.2	9,973	2,149.4	1,016	2,209.3					20,183	10,009.9
S54	9,850	4,444.7	9,759	1,601.6	1,185	1,834.6					20,794	7,880.9
S55	8,766	4,675.6	9,351	2,522.4	1,253	2,064.5					19,370	9,262.5
S56	7,704	4,412.8	9,166	2,533.8	1,382	2,420.0					18,252	9,366.6
S57	7,737	3,739.7	9,868	2,471.5	1,389	2,387.8					18,994	8,599.0
S58	7,757	3,659.0	9,311	2,750.1	1,484	3,033.9					18,552	9,443.0
S59	7,751	3,783.8	9,778	3,194.0	1,459	3,284.1					18,988	10,261.9
S60	7,936	4,178.5	9,599	4,042.1	1,290	3,117.6					18,825	11,338.2
S61	7,771	4,678.7	9,438	5,124.6	1,403	4,200.0					18,612	14,003.3
S62	8,522	3,879.2	10,071	4,598.5	1,574	5,590.2					20,167	14,067.9
S63	8,484	3,553.0	10,482	7,389.6	1,866	6,440.5					20,832	17,383.1
H1	8,747	4,135.2	11,007	7,726.6	2,300	7,001.7					22,054	18,863.5
H2	8,901	3,920.2	11,653	6,054.4	2,915	7,539.4					23,469	17,514.0
H3	8,936	3,927.8	11,806	6,181.5	3,121	7,243.9					23,863	17,353.2
H4	9,499	4,087.0	11,398	8,096.7	2,654	7,334.1					23,551	19,517.8
H5	11,051	3,955.3	11,223	5,625.3	2,143	5,479.5					24,417	15,060.1
H6	12,644	3,892.8	11,157	4,508.1	2,114	5,675.3					25,915	14,076.2
H7	12,029	3,673.1	10,089	3,164.2	2,247	4,512.5					24,365	11,349.8
H8	11,835	3,499.8	10,575	3,624.8	2,159	3,469.0					24,569	10,593.6
H9	10,445	3,443.3	9,316	2,137.2	2,010	3,710.5					21,771	9,291.0
H10	8,512	3,040.9	9,258	3,253.8	1,640	3,518.7					19,410	9,813.4
H11	8,766	2,937.2	8,767	2,044.1	1,298	2,099.9					18,831	7,081.2
H12	8,628	2,960.7	8,169	1,896.4	1,323	1,480.5					18,120	6,337.6
H13	8,750	2,906.7	8,308	1,182.5	1,232	1,257.3	0	0.0	88	448.4	18,378	5,794.9
H14	8,539	2,533.8	8,494	2,021.6	1,117	1,484.3	0	0.0	88	270.3	18,238	6,310.0
H15	10,157	2,995.7	10,637	1,370.0	1,153	1,217.9	0	0.0	63	272.1	22,010	5,855.7
H16	10,330	3,399.0	11,870	1,715.5	1,620	1,398.6	0	0.0	54	174.0	23,874	6,687.1
H17	9,947	3,119.4	12,808	1,933.3	1,580	1,607.5	0	0.0	70	214.7	24,405	6,874.9
H18	10,057	3,136.5	14,232	2,150.0	1,672	1,565.9	0	0.0	81	442.4	26,042	7,294.8
H19	9,535	3,385.8	13,650	2,502.9	1,634	2,275.6	0	0.0	74	271.7	24,893	8,436.0
H20	8,608	2,909.8	13,834	2,296.5	1,459	1,729.0	13	39.7	78	549.2	23,992	7,524.3
H21	6,876	2,281.6	12,847	1,712.0	1,012	1,161.6	21	143.2	49	263.4	20,805	5,561.8
H22	8,082	2,656.7	12,450	1,829.2	1,159	1,265.9	16	21.6	48	193.7	21,755	5,967.1
H23	8,577	2,611.6	12,096	1,494.9	1,241	1,394.1	13	12.4	52	618.7	21,979	6,131.7
H24	9,452	2,868.9	12,586	1,918.0	1,443	1,195.3	14	29.7	51	174.2	23,546	6,186.2
H25	9,899	2,999.5	13,321	1,702.8	1,537	1,520.4	11	12.9	95	498.2	24,863	6,733.8
H26	8,989	2,602.3	11,057	1,739.3	1,338	1,509.7	21	118.9	103	353.8	21,508	6,324.0
H27	8,765	2,933.0	11,058	1,737.5	1,324	1,113.0	9	8.6	59	279.7	21,215	6,071.7
H28	9,070	2,701.5	11,587	1,749.4	1,498	1,251.5	9	8.1	61	439.4	22,225	6,149.8
H29	8,792	2,910.3	11,339	1,851.1	1,518	1,864.4	19	39.3	50	216.9	21,718	6,882.0
H30	8,733	2,563.5	11,618	1,533.5	1,566	1,375.3	19	56.3	58	270.1	21,994	5,798.7
R1	7,862	2,343.6	11,149	1,733.1	1,417	1,226.4	11	28.7	33	161.6	20,472	5,493.3
R2	7,142	2,247.2	10,606	1,726.7	1,296	1,103.1	15	40.6	35	190.7	19,094	5,308.3
R3	7,229	2,200.4	11,926	1,758.9	1,379	1,218.0	14	63.4	43	173.0	20,591	5,413.8
R4	7,008	2,049.9	11,279	1,574.9	1,401	1,236.5	19	37.6	39	199.0	19,746	5,097.9



全国の住宅用途の開発許可件数及び面積

令和4年度

年度	市街化区域		市街化調整区域		非線引都市計画区域		準都市計画区域		「都市計画区域・準都市計画区域」外		合計	
	件数	面積(ha)	件数	面積(ha)	件数	面積(ha)	件数	面積(ha)	件数	面積(ha)	件数	面積(ha)
S46	3,444	3,531.7	6,150	1,192.9							9,594	4,724.6
S47	5,590	4,921.9	7,459	1,052.7							13,049	5,974.6
S48	6,507	5,470.5	7,513	1,381.8							14,020	6,852.3
S49	5,113	3,653.1	7,114	1,287.4							12,227	4,940.5
S50	5,185	2,743.2	13,524	1,192.3	362	899.8					19,071	4,835.3
S51	6,067	2,619.8	8,146	960.2	692	2,348.3					14,905	5,928.3
S52	6,647	3,308.2	6,806	1,410.3	691	1,503.8					14,144	6,222.3
S53	7,132	4,106.0	7,608	929.2	639	1,158.9					15,379	6,194.1
S54	7,412	3,059.0	7,189	658.9	737	997.3					15,338	4,715.2
S55	6,371	3,045.6	6,872	1,400.6	741	1,017.9					13,984	5,464.1
S56	5,578	2,648.4	6,576	1,030.4	705	1,189.0					12,859	4,867.8
S57	5,531	2,707.7	7,186	711.5	754	1,093.2					13,471	4,512.4
S58	5,402	2,368.4	6,769	666.8	704	891.2					12,875	3,926.4
S59	5,217	2,135.9	6,920	1,133.3	660	1,035.9					12,797	4,305.1
S60	5,240	2,597.3	6,677	1,145.2	555	720.2					12,472	4,462.7
S61	5,118	2,011.6	6,637	1,025.0	517	580.3					12,272	3,616.9
S62	5,735	2,119.2	7,075	916.2	594	785.5					13,404	3,820.9
S63	5,517	1,881.5	7,168	707.0	668	733.1					13,353	3,321.6
H1	5,351	2,065.6	7,424	754.0	794	813.6					13,569	3,633.2
H2	5,455	1,988.8	7,998	867.0	1,052	1,343.9					14,505	4,199.7
H3	5,525	1,921.3	8,146	943.9	1,099	1,147.1					14,770	4,012.3
H4	6,394	2,154.9	8,124	998.6	1,032	1,496.3					15,550	4,649.8
H5	8,476	2,402.4	8,237	940.3	932	1,064.7					17,645	4,407.4
H6	10,266	2,556.7	8,480	1,061.2	1,041	1,342.9					19,787	4,960.8
H7	9,406	2,473.2	7,471	1,452.9	1,075	1,288.8					17,952	5,214.9
H8	9,656	2,501.9	8,018	1,061.8	1,125	1,284.4					18,799	4,848.1
H9	8,482	2,357.9	6,831	986.6	926	1,042.5					16,239	4,387.0
H10	6,951	1,896.2	6,795	1,135.2	729	817.6					14,475	3,849.0
H11	7,428	1,991.1	6,656	895.5	671	778.1					14,755	3,664.8
H12	7,231	2,082.5	6,123	561.3	671	538.9					14,025	3,182.7
H13	7,343	2,055.5	6,106	479.0	589	436.5	0	0.0	51	119.0	14,089	3,090.0
H14	7,229	1,721.1	6,486	563.3	519	399.8	0	0.0	42	72.5	14,276	2,756.7
H15	8,754	2,049.6	8,490	548.2	502	393.6	0	0.0	14	33.2	17,760	3,024.6
H16	8,706	2,268.8	9,459	668.9	850	450.7	0	0.0	17	35.3	19,032	3,423.7
H17	8,286	2,138.6	10,438	744.7	739	394.6	0	0.0	15	34.2	19,478	3,312.1
H18	8,348	2,117.6	11,840	918.3	776	379.6	0	0.0	12	32.5	20,976	3,447.9
H19	7,901	2,313.3	11,520	1,097.6	741	710.4	0	0.0	12	23.4	20,174	4,144.6
H20	7,116	1,912.2	11,534	856.8	627	332.9	3	6.7	10	24.2	19,290	3,132.8
H21	5,579	1,414.3	10,791	658.1	456	237.5	5	4.1	5	28.6	16,836	2,342.6
H22	6,733	1,790.6	10,590	748.2	513	231.1	8	13.0	2	31.7	17,846	2,814.6
H23	7,057	1,729.1	10,360	624.1	553	281.7	3	0.9	2	2.8	17,975	2,638.7
H24	7,580	1,784.0	10,669	807.0	697	381.2	3	4.2	9	52.9	18,958	3,029.3
H25	7,919	1,794.9	11,214	811.6	736	485.4	3	6.4	53	151.6	19,925	3,249.9
H26	7,232	1,588.6	9,006	603.9	565	380.7	8	4.1	50	145.2	16,861	2,722.5
H27	6,986	1,608.4	9,096	559.2	634	342.5	3	3.0	10	24.2	16,729	2,537.3
H28	7,220	1,646.8	9,629	622.2	722	301.1	2	1.1	9	13.6	17,582	2,584.8
H29	7,012	1,656.4	9,429	614.8	727	328.1	6	4.2	7	14.2	17,181	2,617.7
H30	7,118	1,574.2	9,905	655.4	789	351.0	2	0.9	8	14.5	17,822	2,596.0
R1	6,460	1,397.7	9,438	599.9	711	291.0	6	23.2	4	57.8	16,619	2,369.6
R2	5,796	1,245.1	9,047	542.4	610	257.8	2	0.4	0	0.0	15,455	2,045.7
R3	5,873	1,241.9	10,346	650.8	654	304.4	7	8.4	6	10.9	16,886	2,216.4
R4	5,685	1,230.4	9,772	706.6	641	307.5	6	11.2	4	11.7	16,108	2,267.3

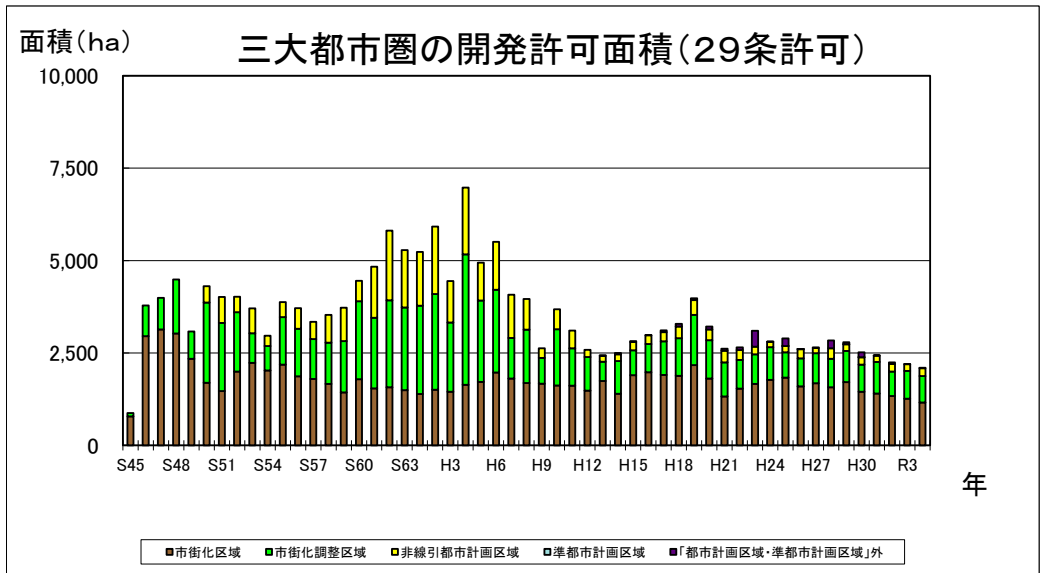
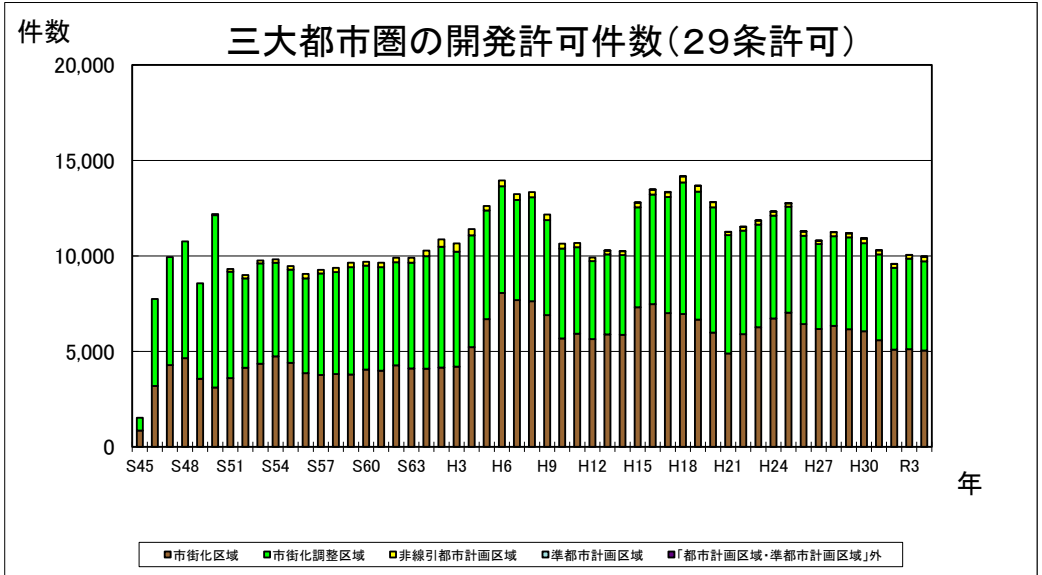


### 三大都市圏の開発許可件数及び面積

※三大都市圏…首都圏(東京都、神奈川県、埼玉県、千葉県)、中部圏(愛知県、岐阜県、三重県)、近畿圏(滋賀県、京都府、大阪府、兵庫県、奈良県、和歌山県)

令和4年度

年度	市街化区域		市街化調整区域		非線引都市計画区域		準都市計画区域		「都市計画区域・準都市計画区域」外		合計	
	件数	面積(ha)	件数	面積(ha)	件数	面積(ha)	件数	面積(ha)	件数	面積(ha)	件数	面積(ha)
S45	857	784.8	665	91.4							1,522	876.2
S46	3,187	2,952.7	4,557	831.4							7,744	3,784.1
S47	4,281	3,134.2	5,654	856.6							9,935	3,990.8
S48	4,646	3,028.3	6,117	1,458.0							10,763	4,486.3
S49	3,567	2,342.5	4,991	739.7							8,558	3,082.2
S50	3,105	1,690.0	9,027	2,171.5	59	446.1					12,191	4,307.6
S51	3,594	1,469.5	5,575	1,843.1	147	703.4					9,316	4,016.0
S52	4,137	1,997.1	4,683	1,605.6	183	418.1					9,003	4,020.8
S53	4,345	2,232.7	5,265	801.5	151	668.7					9,761	3,702.9
S54	4,735	2,026.4	4,907	663.3	171	278.7					9,813	2,968.4
S55	4,395	2,182.0	4,880	1,289.5	195	401.1					9,470	3,872.6
S56	3,855	1,867.8	4,968	1,287.2	236	558.8					9,059	3,713.8
S57	3,759	1,795.0	5,316	1,080.1	190	466.8					9,265	3,341.9
S58	3,814	1,661.1	5,337	1,117.4	226	750.9					9,377	3,529.4
S59	3,788	1,431.1	5,624	1,390.6	228	902.6					9,640	3,724.3
S60	4,047	1,788.5	5,441	2,109.0	204	551.4					9,692	4,448.9
S61	3,992	1,539.5	5,420	1,913.3	232	1,383.4					9,644	4,836.2
S62	4,268	1,570.9	5,396	2,350.7	236	1,891.1					9,900	5,812.7
S63	4,102	1,490.4	5,543	2,237.7	256	1,552.3					9,901	5,280.4
H1	4,089	1,388.7	5,890	2,387.9	303	1,457.8					10,282	5,234.4
H2	4,155	1,501.9	6,322	2,593.3	388	1,826.1					10,865	5,921.3
H3	4,202	1,448.2	6,017	1,875.7	432	1,121.4					10,651	4,445.3
H4	5,214	1,635.3	5,858	3,529.4	326	1,808.1					11,398	6,972.8
H5	6,690	1,715.2	5,690	2,202.8	237	1,024.6					12,617	4,942.6
H6	8,057	1,972.7	5,591	2,236.8	296	1,296.6					13,944	5,506.1
H7	7,686	1,808.9	5,243	1,099.2	306	1,168.0					13,235	4,076.1
H8	7,627	1,685.0	5,437	1,444.9	280	828.9					13,344	3,958.8
H9	6,901	1,670.2	4,969	697.8	299	260.3					12,169	2,628.3
H10	5,675	1,619.4	4,704	1,522.3	267	540.2					10,646	3,681.9
H11	5,924	1,612.3	4,530	1,013.5	222	478.3					10,676	3,104.0
H12	5,645	1,478.9	4,076	909.5	192	195.5					9,913	2,583.9
H13	5,885	1,743.4	4,196	521.6	191	156.7	0	0.0	12	16.7	10,284	2,438.4
H14	5,860	1,393.8	4,182	884.4	194	184.6	0	0.0	9	35.8	10,245	2,498.6
H15	7,309	1,896.0	5,231	676.1	246	224.3	0	0.0	10	25.7	12,796	2,822.1
H16	7,470	1,978.4	5,742	763.9	255	235.5	0	0.0	3	8.5	13,470	2,986.3
H17	7,008	1,904.4	6,076	909.2	245	246.9	0	0.0	18	51.7	13,347	3,112.1
H18	6,959	1,878.4	6,885	1,023.0	314	311.4	0	0.0	8	72.5	14,166	3,285.2
H19	6,662	2,170.8	6,700	1,356.3	311	400.6	0	0.0	6	52.4	13,679	3,980.1
H20	5,979	1,808.3	6,559	1,038.5	269	290.8	0	0.0	13	74.3	12,820	3,211.9
H21	4,894	1,321.2	6,187	923.9	173	314.7	0	0.0	9	54.9	11,263	2,614.7
H22	5,897	1,534.4	5,427	777.3	194	267.3	0	0.0	5	71.2	11,523	2,650.2
H23	6,265	1,659.3	5,368	803.5	211	205.8	0	0.0	7	430.1	11,851	3,098.7
H24	6,718	1,770.5	5,395	885.6	201	147.2	0	0.0	1	2.0	12,315	2,805.3
H25	7,027	1,832.4	5,549	685.1	178	169.9	1	0.4	8	205.9	12,763	2,893.7
H26	6,429	1,598.3	4,625	753.6	223	252.0	5	0.5	1	2.9	11,283	2,607.2
H27	6,173	1,683.2	4,441	807.9	180	144.1	0	0.0	5	18.5	10,799	2,653.7
H28	6,334	1,573.6	4,692	769.8	214	280.5	0	0.0	5	217.2	11,245	2,841.1
H29	6,162	1,709.5	4,803	844.3	216	181.2	1	0.4	9	57.7	11,191	2,793.1
H30	6,052	1,451.8	4,616	729.9	246	201.4	1	0.9	10	135.4	10,925	2,519.4
R1	5,586	1,400.3	4,496	855.4	208	171.9	0	0.0	2	9.6	10,292	2,437.2
R2	5,091	1,334.7	4,280	663.1	205	201.8	0	0.0	4	44.9	9,580	2,244.6
R3	5,107	1,263.9	4,751	751.4	189	180.9	0	0.0	2	1.8	10,049	2,198.0
R4	5,045	1,160.2	4,670	712.4	244	211.3	0	0.0	4	16.8	9,963	2,100.7



三大都市圏の住宅用途の開発許可件数及び面積

※三大都市圏…首都圏(東京都、神奈川県、埼玉県、千葉県)、中部圏(愛知県、岐阜県、三重県)、近畿圏(滋賀県、京都府、大阪府、兵庫県、奈良県、和歌山県)

令和4年度

年度	市街化区域		市街化調整区域		非線引都市計画区域		準都市計画区域		「都市計画区域・準都市計画区域」外		合計	
	件数	面積(ha)	件数	面積(ha)	件数	面積(ha)	件数	面積(ha)	件数	面積(ha)	件数	面積(ha)
S46	1,720	1,850.5	3,450	483.6							5,170	2,334.1
S47	2,603	2,214.3	4,395	339.5							6,998	2,553.8
S48	3,058	2,230.8	4,900	753.3							7,958	2,984.1
S49	2,243	1,555.8	4,176	447.9							6,419	2,003.7
S50	2,218	1,132.3	7,570	426.7	32	240.8					9,820	1,799.8
S51	2,645	1,046.9	4,575	536.1	84	242.9					7,304	1,825.9
S52	3,062	1,392.1	3,588	982.1	116	310.3					6,766	2,684.5
S53	3,262	1,435.0	4,110	323.1	95	458.1					7,467	2,216.2
S54	3,473	1,283.5	3,681	256.6	95	200.7					7,249	1,740.8
S55	3,162	1,476.6	3,691	759.8	106	228.0					6,959	2,464.4
S56	2,803	1,289.9	3,558	586.8	115	343.2					6,476	2,219.9
S57	2,721	1,290.4	3,879	333.8	92	258.4					6,692	1,882.6
S58	2,668	1,054.4	3,972	240.3	115	129.6					6,755	1,424.3
S59	2,470	878.1	3,992	506.7	88	237.6					6,550	1,622.4
S60	2,687	1,002.4	3,761	626.5	75	141.3					6,523	1,770.2
S61	2,659	860.5	3,868	516.9	58	109.1					6,585	1,486.5
S62	2,905	927.2	3,913	485.3	53	107.5					6,871	1,520.0
S63	2,734	807.9	4,074	236.3	62	81.1					6,870	1,125.3
H1	2,568	763.0	4,308	271.5	95	117.2					6,971	1,151.7
H2	2,590	836.2	4,718	312.7	133	264.3					7,441	1,413.2
H3	2,589	804.0	4,576	360.8	124	122.4					7,289	1,287.2
H4	3,523	863.0	4,615	398.3	117	344.9					8,255	1,606.2
H5	5,343	1,118.0	4,412	363.8	92	70.9					9,847	1,552.7
H6	6,742	1,407.4	4,506	564.9	159	334.0					11,407	2,306.3
H7	6,341	1,285.1	4,169	348.1	146	305.5					10,656	1,938.7
H8	6,485	1,282.0	4,338	342.9	126	325.3					10,949	1,950.2
H9	5,841	1,172.2	3,880	326.3	153	112.9					9,874	1,611.4
H10	4,807	1,093.7	3,647	585.8	120	133.2					8,574	1,812.7
H11	5,160	1,139.1	3,629	409.6	115	122.5					8,904	1,671.2
H12	5,000	1,102.0	3,245	173.7	109	71.7					8,354	1,347.4
H13	5,191	1,328.1	3,210	206.4	91	33.5	0	0.0	5	8.5	8,497	1,576.5
H14	5,187	1,045.1	3,262	281.9	89	35.2	0	0.0	4	8.1	8,542	1,370.3
H15	6,562	1,362.8	4,272	266.4	112	55.4	0	0.0	0	0.0	10,946	1,684.6
H16	6,524	1,406.7	4,595	328.1	122	51.1	0	0.0	1	1.8	11,242	1,787.7
H17	6,062	1,371.7	4,882	342.3	118	55.0	0	0.0	1	2.9	11,063	1,772.0
H18	5,986	1,351.5	5,729	482.4	159	66.2	0	0.0	0	0.0	11,874	1,900.1
H19	5,718	1,611.0	5,645	587.1	145	56.7	0	0.0	0	0.0	11,508	2,254.8
H20	5,106	1,249.6	5,408	399.8	119	46.5	0	0.0	0	0.0	10,633	1,695.8
H21	4,162	938.4	5,180	326.0	78	36.7	0	0.0	0	0.0	9,420	1,301.1
H22	5,082	1,129.7	4,609	305.0	74	30.0	0	0.0	1	30.0	9,766	1,494.7
H23	5,313	1,133.5	4,575	303.5	94	42.8	0	0.0	0	0.0	9,982	1,479.8
H24	5,566	1,156.4	4,482	300.0	88	41.0	0	0.0	0	0.0	10,136	1,497.4
H25	5,637	1,092.4	4,596	303.2	71	36.8	1	0.4	0	0.0	10,305	1,432.8
H26	5,337	1,025.4	3,662	249.0	91	44.5	4	0.4	0	0.0	9,094	1,319.4
H27	5,016	995.6	3,571	220.2	69	31.9	0	0.0	0	0.0	8,656	1,247.7
H28	5,202	992.9	3,813	246.0	78	30.0	0	0.0	0	0.0	9,093	1,268.8
H29	5,049	1,051.7	3,902	264.2	113	43.7	0	0.0	3	1.7	9,067	1,361.3
H30	5,060	955.1	3,841	267.9	106	35.9	0	0.0	0	0.0	9,007	1,258.9
R1	4,688	865.3	3,715	260.0	111	38.5	0	0.0	1	4.6	8,515	1,168.4
R2	4,210	764.6	3,594	227.4	94	32.1	0	0.0	0	0.0	7,898	1,024.0
R3	4,260	771.2	4,046	246.9	87	31.0	0	0.0	0	0.0	8,393	1,049.0
R4	4,211	736.2	4,002	317.1	108	48.8	0	0.0	0	0.0	8,321	1,102.1

